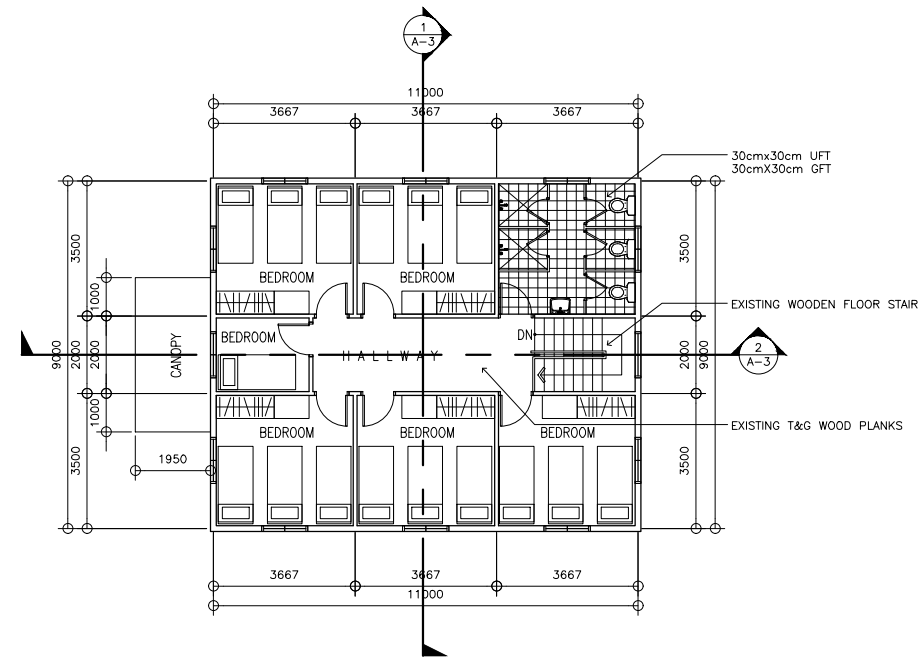


1  
A-1

## GROUND FLOOR PLAN

SCALE 1:200M

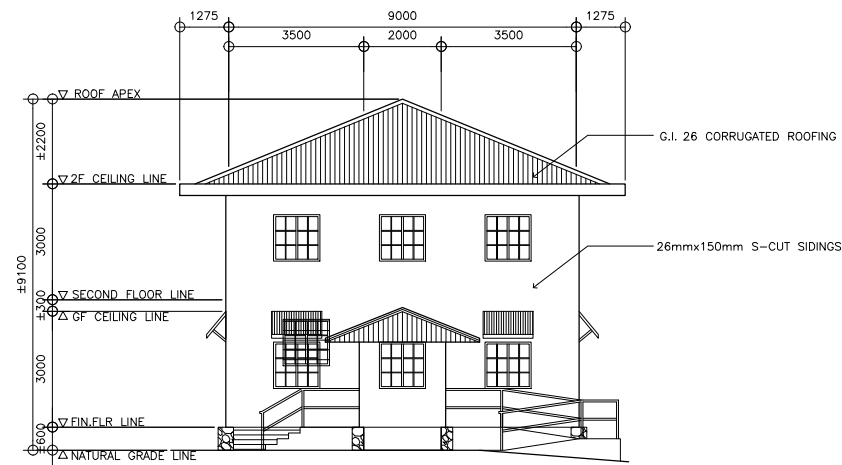


2  
A-1

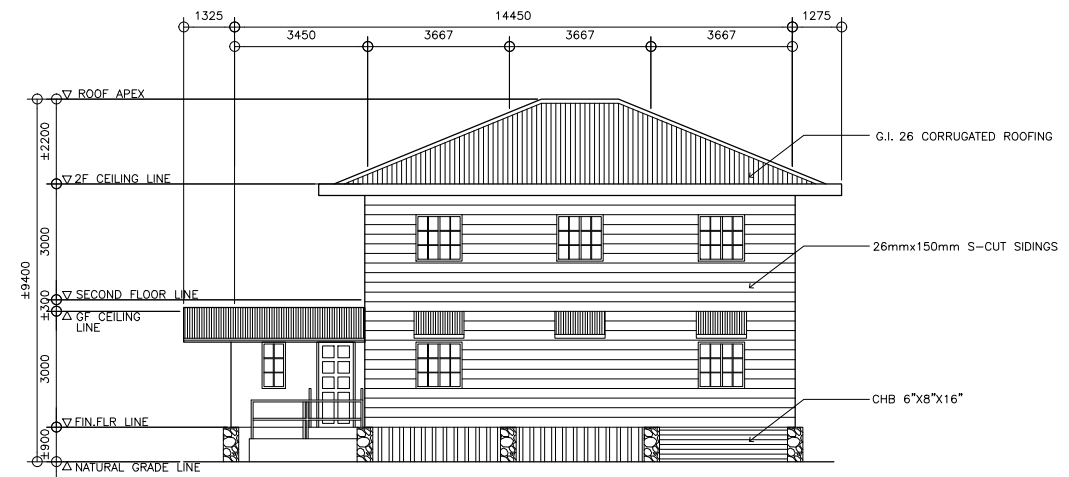
## SECOND FLOOR PLAN

SCALE 1:200M

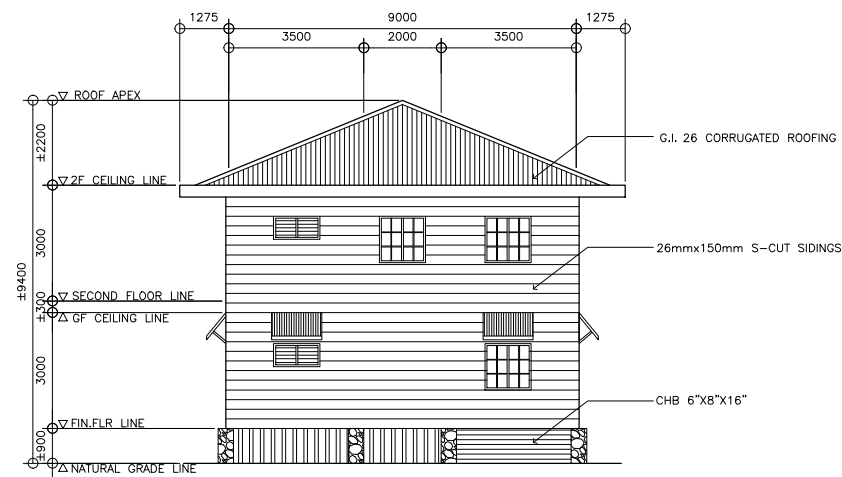
<p>REPUBLIC OF THE PHILIPPINES DEPARTMENT OF EDUCATION EDUCATION FACILITIES DIVISION MERALCO AVENUE, PASIG CITY</p>	<p>DRAWN BY :</p> <p><i>Camille Raposa</i> CAMILLE ANN C. RAPOSA ARCHITECT EFD-DepED</p>	<p>CHECKED BY :</p> <p><i>Jet Raymond G. Alabaso</i> JET RAYMOND G. ALABASO PDO II/ARCHITECT EFD-DepED</p>	<p>RECOMMENDING APPROVAL :</p> <p><i>Annabelle R. Pangan</i> ANNABELLE R. PANGAN CHIEF, EFD DepED</p>	<p>RECOMMENDING APPROVAL :</p> <p><i>Diosdado S. Medina</i> DIOSDADO S. MEDINA CAMP SUPERINTENDENT BAGUIO TEACHERS CAMP</p>	<p>APPROVED BY :</p> <p><i>Nolasco A. Mempin</i> NOLASCO A. MEMPIN UNDERSECRETARY FOR ADMINISTRATION DepED</p>	<p>PROJECT TITLE :</p> <p>REPAIR AND REHABILITATION OF BACHELORS HALL</p> <p>LOCATION : BAGUIO TEACHERS CAMP</p>	<p>PROJECT CODE:</p>	<p>OWNER :</p> <p>DEPARTMENT OF EDUCATION DepED</p> <p>SHEET CONTENTS :</p> <p>GROUND FLOOR PLAN SECOND FLOOR PLAN</p>	<p>SHEET NO:</p> <p>A-1 4</p>



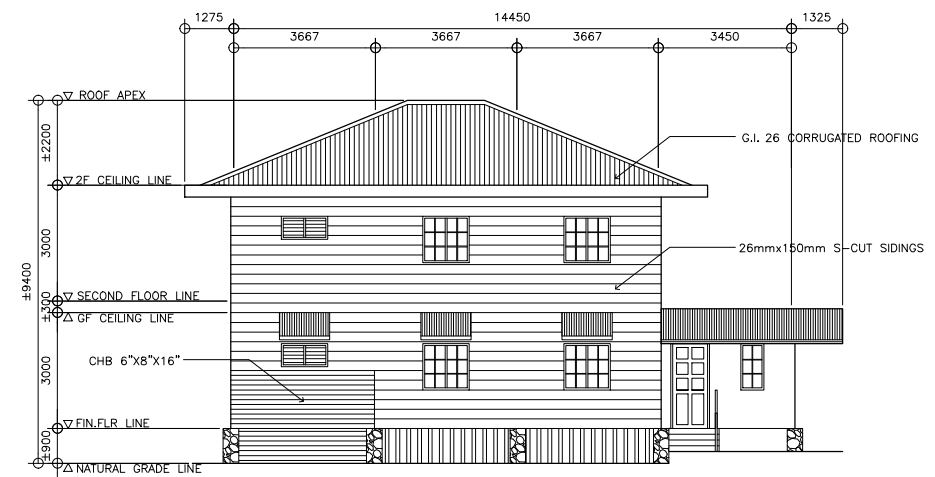
**1** FRONT ELEVATION  
A-2 SCALE 1:200M



**2** RIGHT SIDE ELEVATION  
A-2 SCALE 1:200M

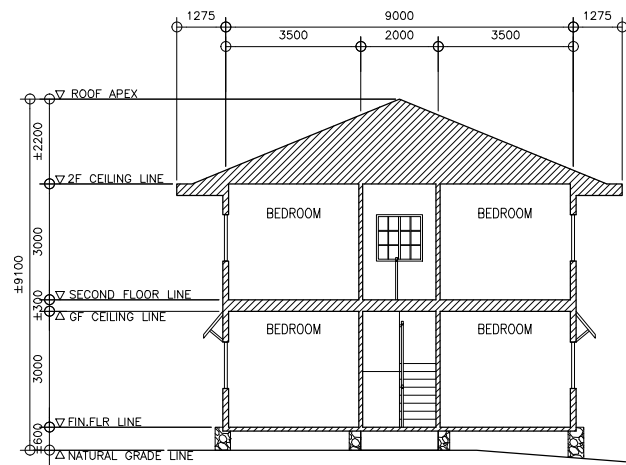


**3** REAR ELEVATION  
A-2 SCALE 1:200M

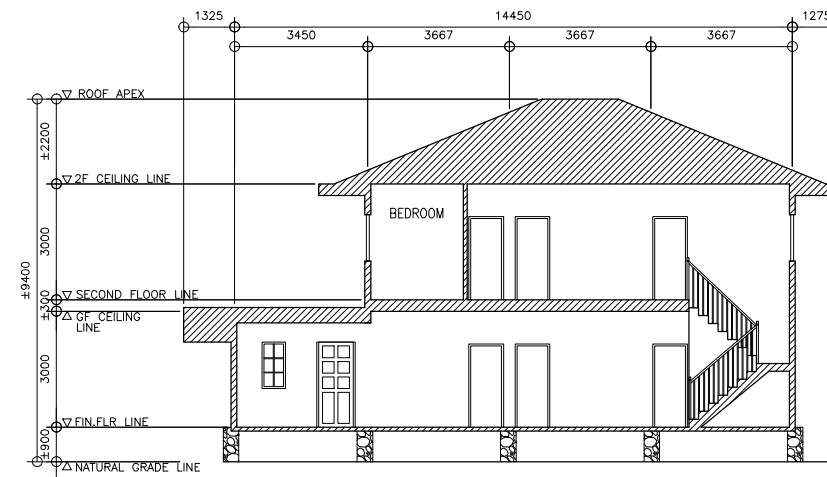


**4** LEFT SIDE ELEVATION  
A-2 SCALE 1:200M

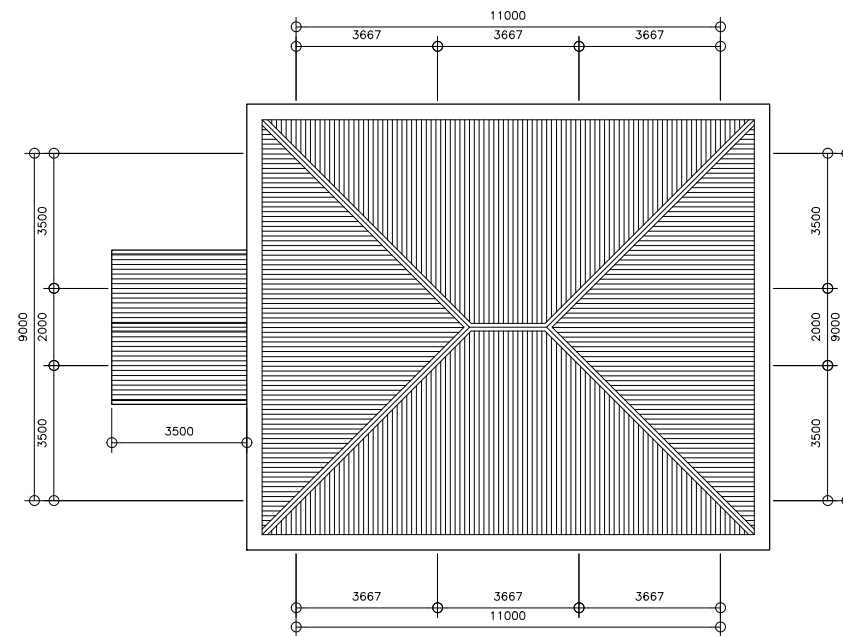
<p>REPUBLIC OF THE PHILIPPINES DEPARTMENT OF EDUCATION EDUCATION FACILITIES DIVISION MERALCO AVENUE, PASIG CITY</p>	<p>DRAWN BY :</p> <p><i>Camille Raposa</i> CAMILLE ANN C. RAPOSA ARCHITECT EFD-DepED</p>	<p>CHECKED BY :</p> <p><i>Jet Raymond G. Alabaso</i> JET RAYMOND G. ALABASO PDO // ARCHITECT EFD-DepED</p>	<p>RECOMMENDING APPROVAL :</p> <p><i>Annabelle R. Pangan</i> ANNABELLE R. PANGAN CHIEF, EFD DepED</p>	<p>RECOMMENDING APPROVAL :</p> <p><i>Diosdado S. Medina</i> DIOSDADO S. MEDINA CAMP SUPERINTENDENT BAGUIO TEACHERS CAMP</p>	<p>APPROVED BY :</p> <p><i>Nolasco A. Mempin</i> NOLASCO A. MEMPIN UNDERSECRETARY FOR ADMINISTRATION DepED</p>	<p>PROJECT TITLE :</p> <p>REPAIR AND REHABILITATION OF BACHELORS HALL</p>	<p>PROJECT CODE:</p>	<p>OWNER :</p> <p>DEPARTMENT OF EDUCATION DepED</p>	<p>SHEET NO:</p> <p>A-2 4</p>
	<p>LOCATION : BAGUIO TEACHERS CAMP</p>						<p>SHEET CONTENTS :</p> <p>FRONT ELEVATION, REAR ELEVATION, LEFT SIDE ELEVATION, RIGHT SIDE ELEVATION</p>		









1 LONGITUDINAL SECTION  
A-3 SCALE 1:200M



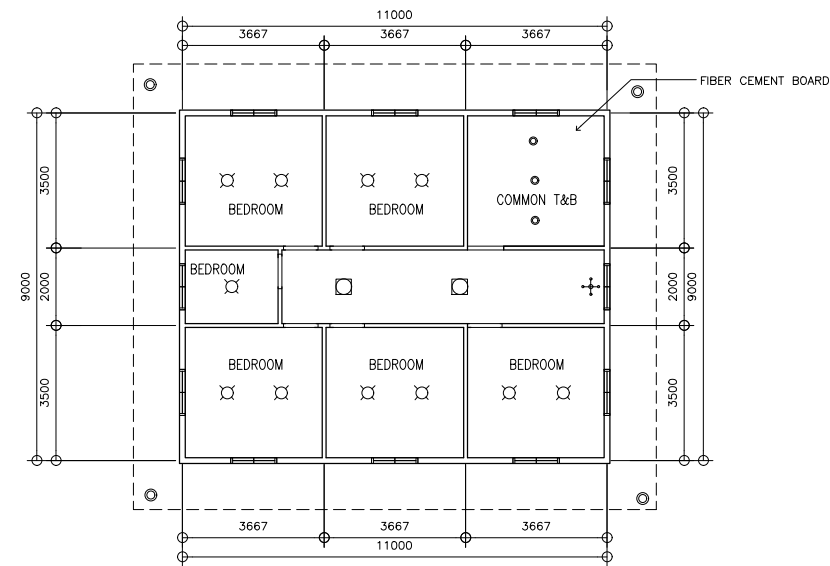
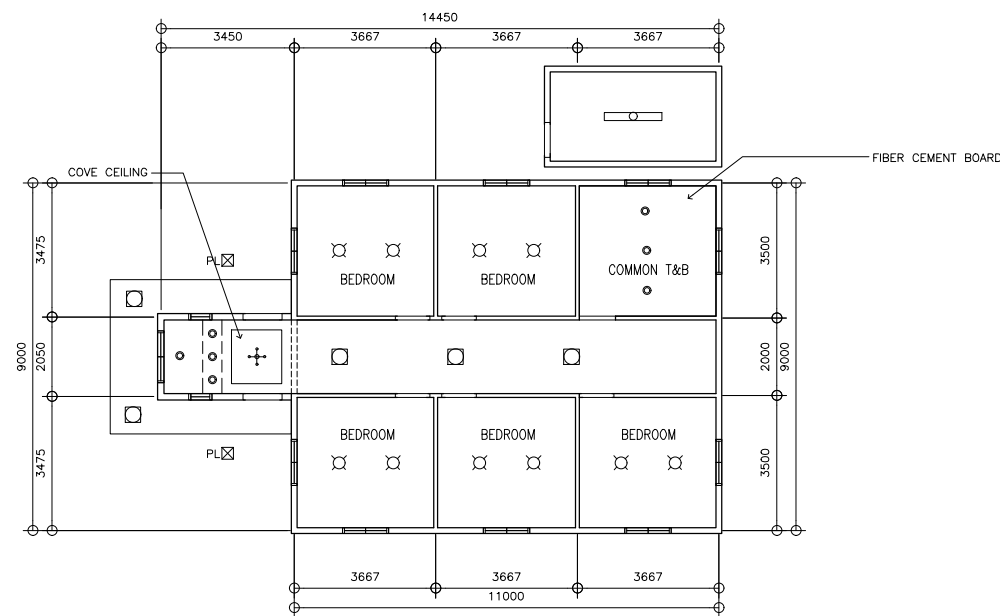
2 CROSS SECTION  
A-3 SCALE 1:200M



3 ROOF PLAN  
A-3 SCALE 1:200M

 <p>REPUBLIC OF THE PHILIPPINES DEPARTMENT OF EDUCATION EDUCATION FACILITIES DIVISION MERALCO AVENUE, PASIG CITY</p>	DRAWN BY :  <b>CAMILLE ANN C. RAPOSO</b> ARCHITECT EFD-DepED	CHECKED BY :  <b>JET RAYMOND G. ALABASO</b> PDO II/ARCHITECT EFD-DepED	RECOMMENDING APPROVAL :  <b>ANNABELLE R. PANGAN</b> CHIEF, EFD DepED	RECOMMENDING APPROVAL :  <b>DIOSDADO S. MEDINA</b> CAMP SUPERINTENDENT BAGUIO TEACHERS CAMP	APPROVED BY :  <b>NOLASCO A. MEMPIN</b> UNDERSECRETARY FOR ADMINISTRATION DepED	PROJECT TITLE : <b>REPAIR AND REHABILITATION OF BACHELORS HALL</b>  LOCATION : BAGUIO TEACHERS CAMP	PROJECT CODE:  	OWNER : <b>DEPARTMENT OF EDUCATION DepED</b>  SHEET CONTENTS : LONGITUDINAL SECTION, CROSS SECTION ROOF PLAN	SHEET NO: <div style="border: 1px solid black; border-radius: 50%; width: 40px; height: 40px; display: flex; align-items: center; justify-content: center; margin: 0 auto;"> <span style="font-size: 24px; font-weight: bold;">A-3</span>  <span style="font-size: 24px; font-weight: bold;">4</span> </div>
---	---	---	---	--	--	--	-----------------------	---	---

LEGEND	
	6" RECESSED TYPE DOWNLIGHT
	8" TUBULAR TYPE HOUSING, WITH LED BULB
	4" TUBULAR TYPE HOUSING, WITH LED BULB
	4" RECESSED TYPE DOWNLIGHT
	CHANDELIER
	INDUSTRIAL TYPE, T8 BULB
	POST LAMP



1 GROUND FLOOR REFLECTED CEILING PLAN  
A-4 SCALE 1:200M

2 SECOND FLOOR REFLECTED CEILING PLAN  
A-4 SCALE 1:200M

<p>REPUBLIC OF THE PHILIPPINES DEPARTMENT OF EDUCATION EDUCATION FACILITIES DIVISION MERALCO AVENUE, PASIG CITY</p>	<p>DRAWN BY :</p> <p><i>Camille Raposa</i> CAMILLE ANN C. RAPOSA ARCHITECT EFD-DepED</p>	<p>CHECKED BY :</p> <p><i>Jet Raymond G. Alabaso</i> JET RAYMOND G. ALABASO PDO II/ARCHITECT EFD-DepED</p>	<p>RECOMMENDING APPROVAL :</p> <p><i>Annabelle R. Pangan</i> ANNABELLE R. PANGAN CHIEF, EFD DepED</p>	<p>RECOMMENDING APPROVAL :</p> <p><i>Diosdado S. Medina</i> DIOSDADO S. MEDINA CAMP SUPERINTENDENT BAGUIO TEACHERS CAMP</p>	<p>APPROVED BY :</p> <p><i>Nolasco A. Mempin</i> NOLASCO A. MEMPIN UNDERSECRETARY FOR ADMINISTRATION DepED</p>	<p>PROJECT TITLE :</p> <p>REPAIR AND REHABILITATION OF BACHELORS HALL</p> <p>LOCATION : BAGUIO TEACHERS CAMP</p>	<p>PROJECT CODE:</p>	<p>OWNER :</p> <p>DEPARTMENT OF EDUCATION DepED</p> <p>SHEET CONTENTS :</p> <p>GROUND FLOOR REFLECTED CEILING PLAN SECOND FLOOR REFLECTED CEILING PLAN</p>	<p>SHEET NO:</p> <p>A-4 4</p>
---	--	--	---	---	--	--	----------------------	--	-----------------------------------