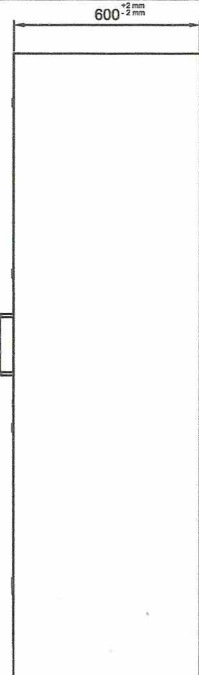
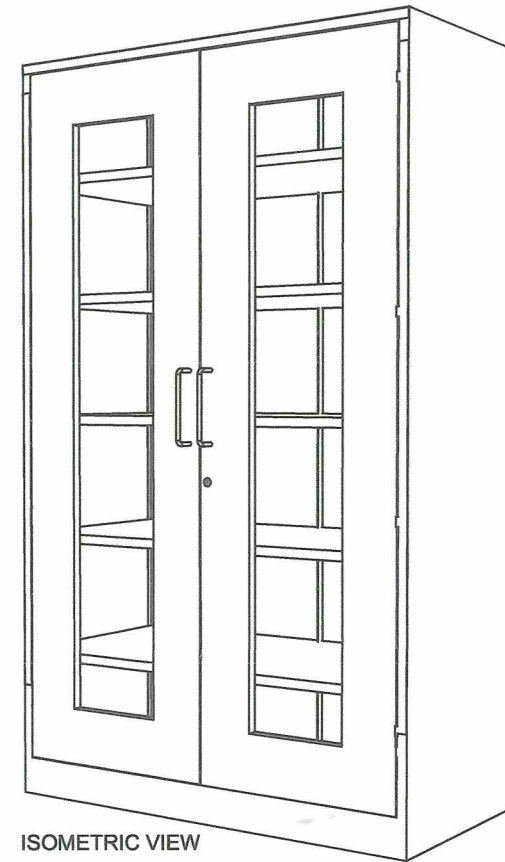


FRONT VIEW



SIDE VIEW



ISOMETRIC VIEW

**Description :**


- Finish : Polished
- Material : 1.00mm Thick Stainless Steel 304 Sheet, 6mm thick Flexi-Glass Door
- Size : 2.0 meters x 1.20 meters x 0.6 meters
- Feature : Durable and Rigid

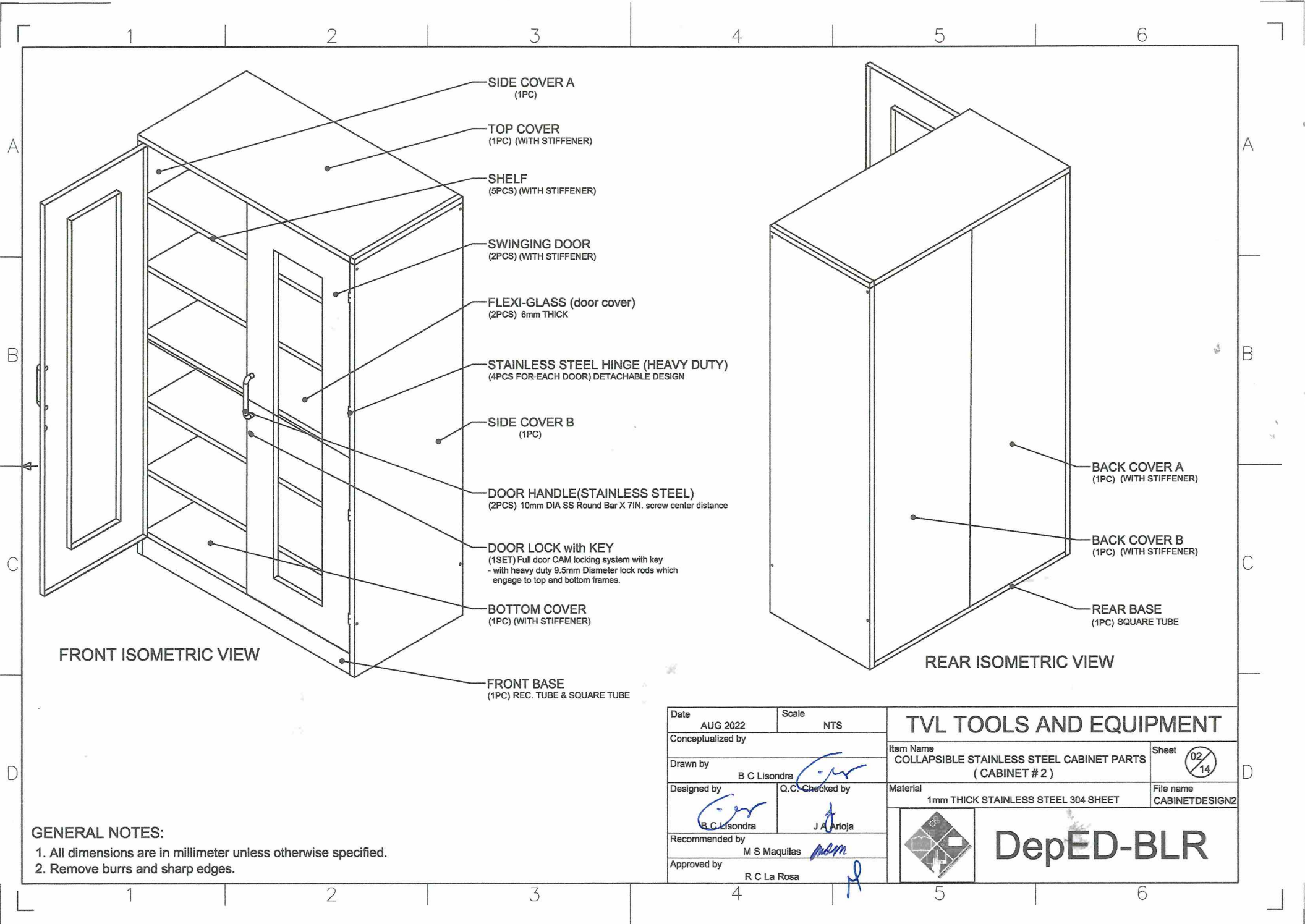
**About Cabinet :**

1. 1.00mm thickness stainless steel 304 sheet then polished.
2. The cabinet body's material is stainless steel 304.
3. 2 Swinging flexi-glass doors with 2pcs stainless steel 304 handle bars(10mm diameter Stainless Steel 304 Round Bar x 7in. screw mounted in between center. \* 1 set (Full door 3 way CAM locking system w/ key), and 4 heavy duty detachable hinges( 3 inches long) on each door.
4. 5 Adjustable and detachable shelves with support set.
5. Bolts and nuts must be installed as fasteners.
6. Tongue and groove must be provided to interlock the bottom cover(tongue), side panels and back panels (groove).
7. The 3 way CAM Locking system of the collapsible cabinet door is subject for approval during sample evaluation.
8. Cabinet must be mounted on the WALL using 2pcs. Ø3/8 inches x 2 inches METAL EXPANSION BOLT with Ø20mm x 2mm thick washer.

**GENERAL NOTES:**

1. All dimensions are in millimeter unless otherwise specified.
2. Remove burrs and sharp edges.

Date AUG 2022	Scale NTS	<b>TVL TOOLS AND EQUIPMENT</b>	
Conceptualized by		Item Name COLLAPSIBLE STAINLESS STEEL CABINET ( CABINET # 2 )	Sheet 01 / 14
Drawn by B C Lisondra	Q.C. Checked by J A Artoja	Material 1mm THICK STAINLESS STEEL 304 SHEET	File name CABINETDESIGN2
Recommended by M S Maquillas	Approved by R C La Rosa	 <b>DepED-BLR</b>	




- SIDE COVER A (1PC)
- TOP COVER (1PC) (WITH STIFFENER)
- SHELF (5PCS) (WITH STIFFENER)
- SWINGING DOOR (2PCS) (WITH STIFFENER)
- FLEXI-GLASS (door cover) (2PCS) 6mm THICK
- STAINLESS STEEL HINGE (HEAVY DUTY) (4PCS FOR EACH DOOR) DETACHABLE DESIGN
- SIDE COVER B (1PC)
- DOOR HANDLE (STAINLESS STEEL) (2PCS) 10mm DIA SS Round Bar X 7IN. screw center distance
- DOOR LOCK with KEY (1SET) Full door CAM locking system with key - with heavy duty 9.5mm Diameter lock rods which engage to top and bottom frames.
- BOTTOM COVER (1PC) (WITH STIFFENER)
- FRONT BASE (1PC) REC. TUBE & SQUARE TUBE

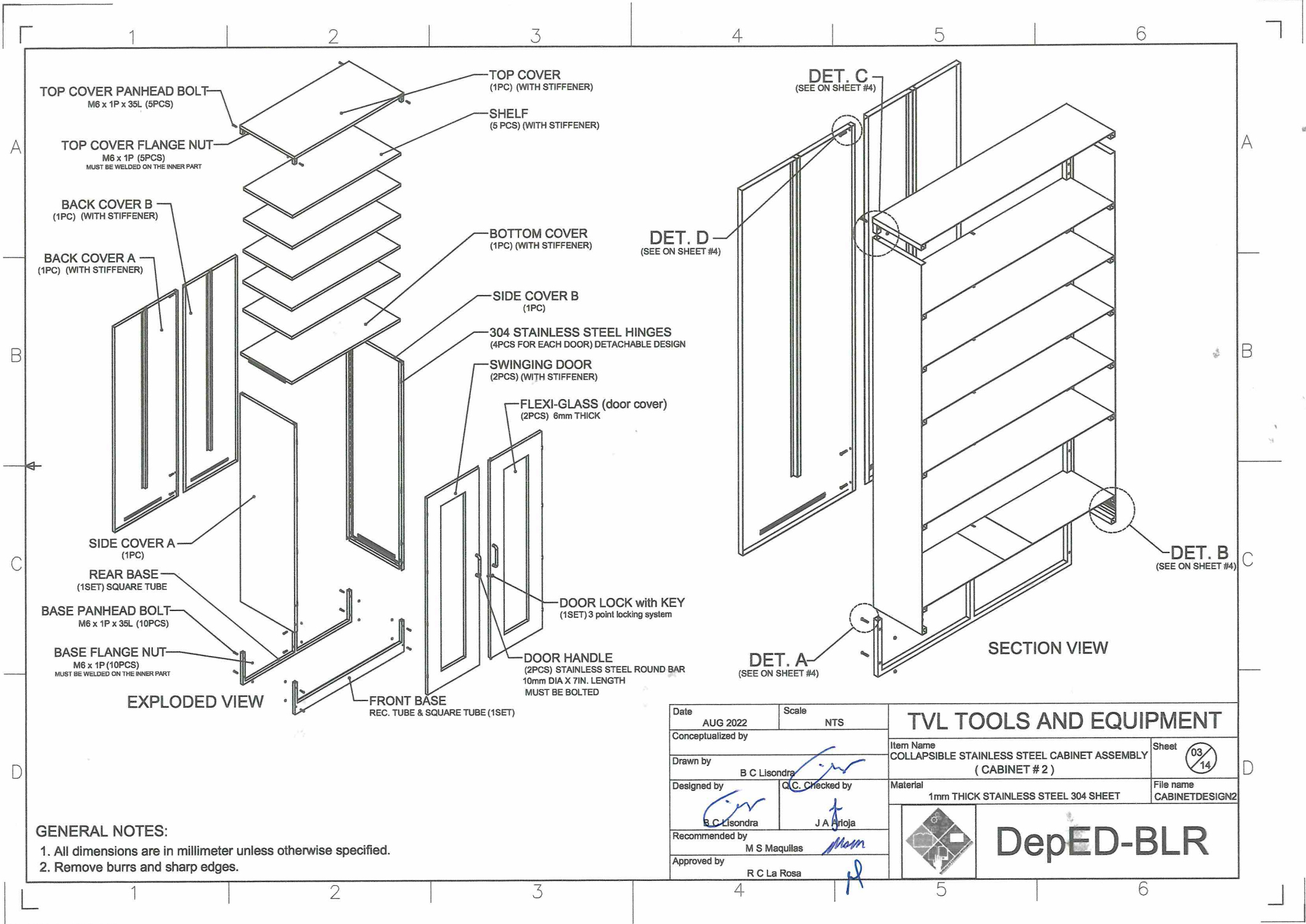
- BACK COVER A (1PC) (WITH STIFFENER)
- BACK COVER B (1PC) (WITH STIFFENER)
- REAR BASE (1PC) SQUARE TUBE

FRONT ISOMETRIC VIEW

REAR ISOMETRIC VIEW


**GENERAL NOTES:**  
 1. All dimensions are in millimeter unless otherwise specified.  
 2. Remove burrs and sharp edges.

Date AUG 2022	Scale NTS	<b>TVL TOOLS AND EQUIPMENT</b>	
Conceptualized by		Item Name COLLAPSIBLE STAINLESS STEEL CABINET PARTS (CABINET # 2)	Sheet 02/14
Drawn by B C Lisondra	Q.C. Checked by J A Artoja	Material 1mm THICK STAINLESS STEEL 304 SHEET	File name CABINETDESIGN2
Designed by B C Lisondra	Recommended by M S Maquillas	 <b>DepED-BLR</b>	
Approved by R C La Rosa			

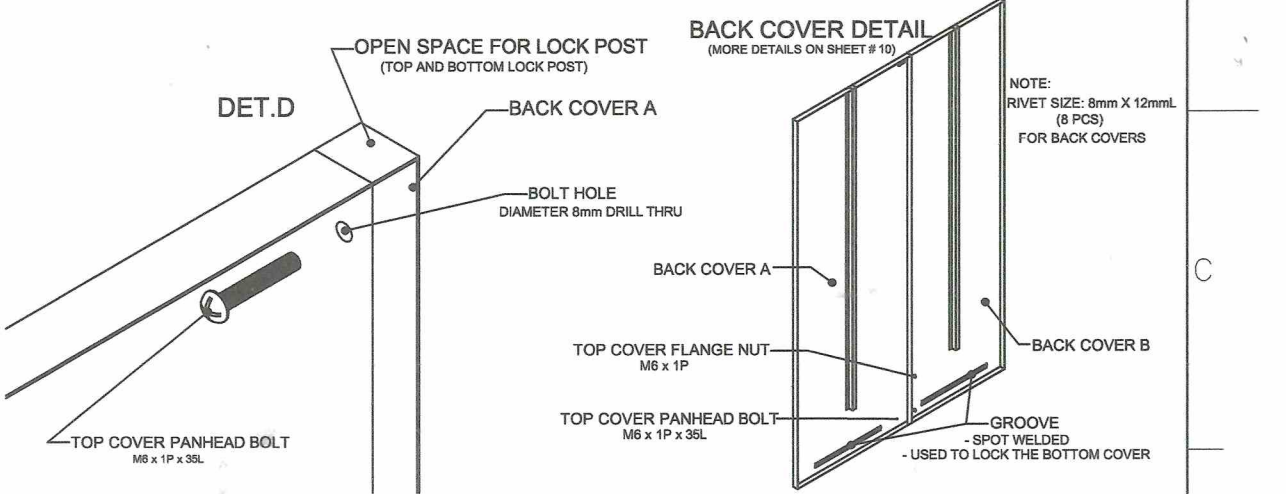
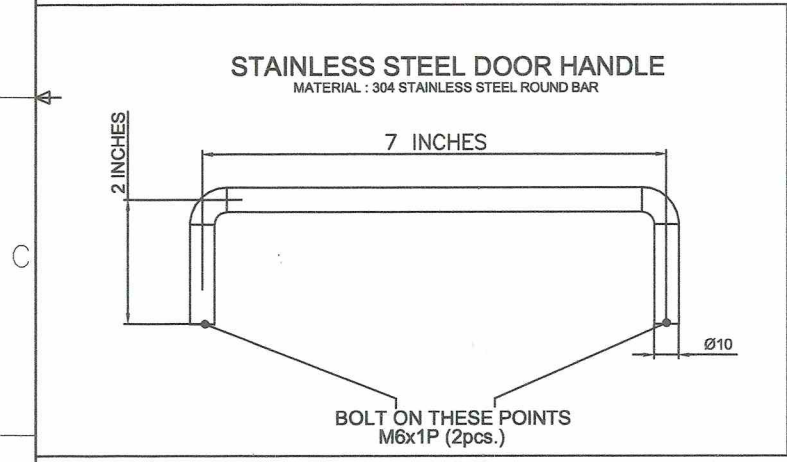
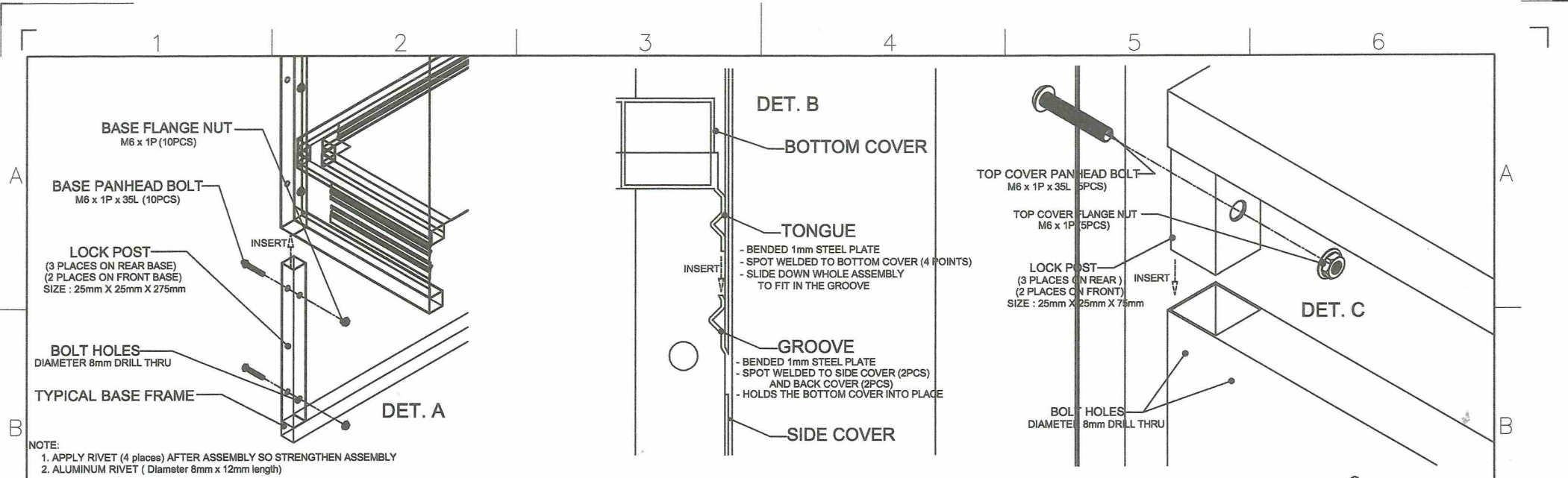


**GENERAL NOTES:**

1. All dimensions are in millimeter unless otherwise specified.
2. Remove burrs and sharp edges.


Date	AUG 2022	Scale	NTS	<b>TVL TOOLS AND EQUIPMENT</b>	
Conceptualized by					
Drawn by	B C Lisondra			COLLAPSIBLE STAINLESS STEEL CABINET ASSEMBLY (CABINET # 2)	03/14
Designed by	B C Lisondra		Q.C. Checked by	Material	File name
Recommended by	M S Maquillas		J A Arjoja	1mm THICK STAINLESS STEEL 304 SHEET	CABINETDESIGN2
Approved by	R C La Rosa			 <b>DepED-BLR</b>	

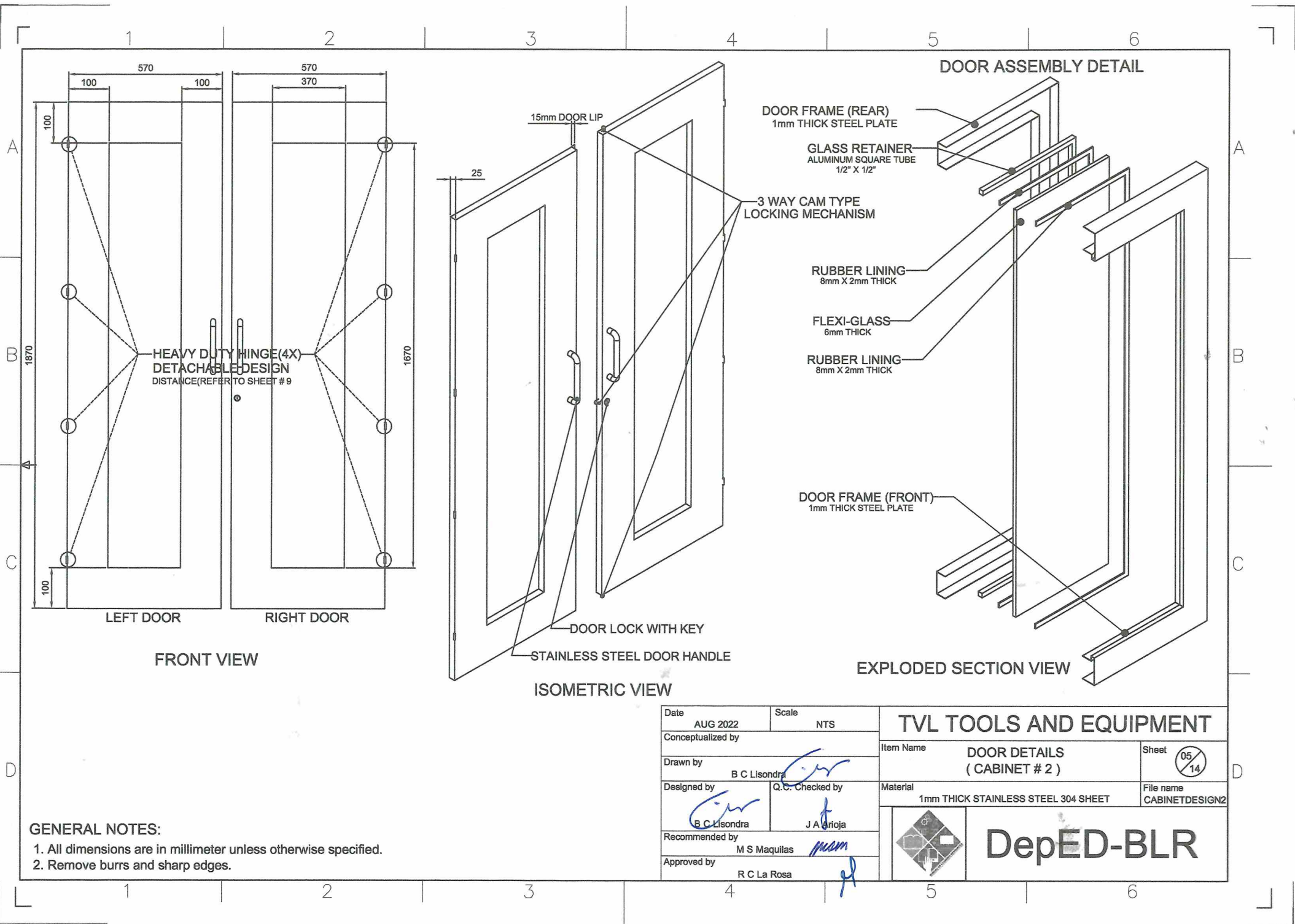




**GENERAL NOTES:**


- All dimensions are in millimeter unless otherwise specified.
- Remove burrs and sharp edges.

Date	AUG 2022	Scale	NTS	<b>TVL TOOLS AND EQUIPMENT</b>	
Conceptualized by					
Drawn by	B C Lisondra			Material	1mm THICK STAINLESS STEEL 304 SHEET
Designed by	B C Lisondra			File name	CABINETDESIGN2
Recommended by	M S Maquillas			 <b>DepED-BLR</b>	
Approved by	R C La Rosa				
				Sheet	04 / 14
				Q.C. Checked by	J A Prijoja

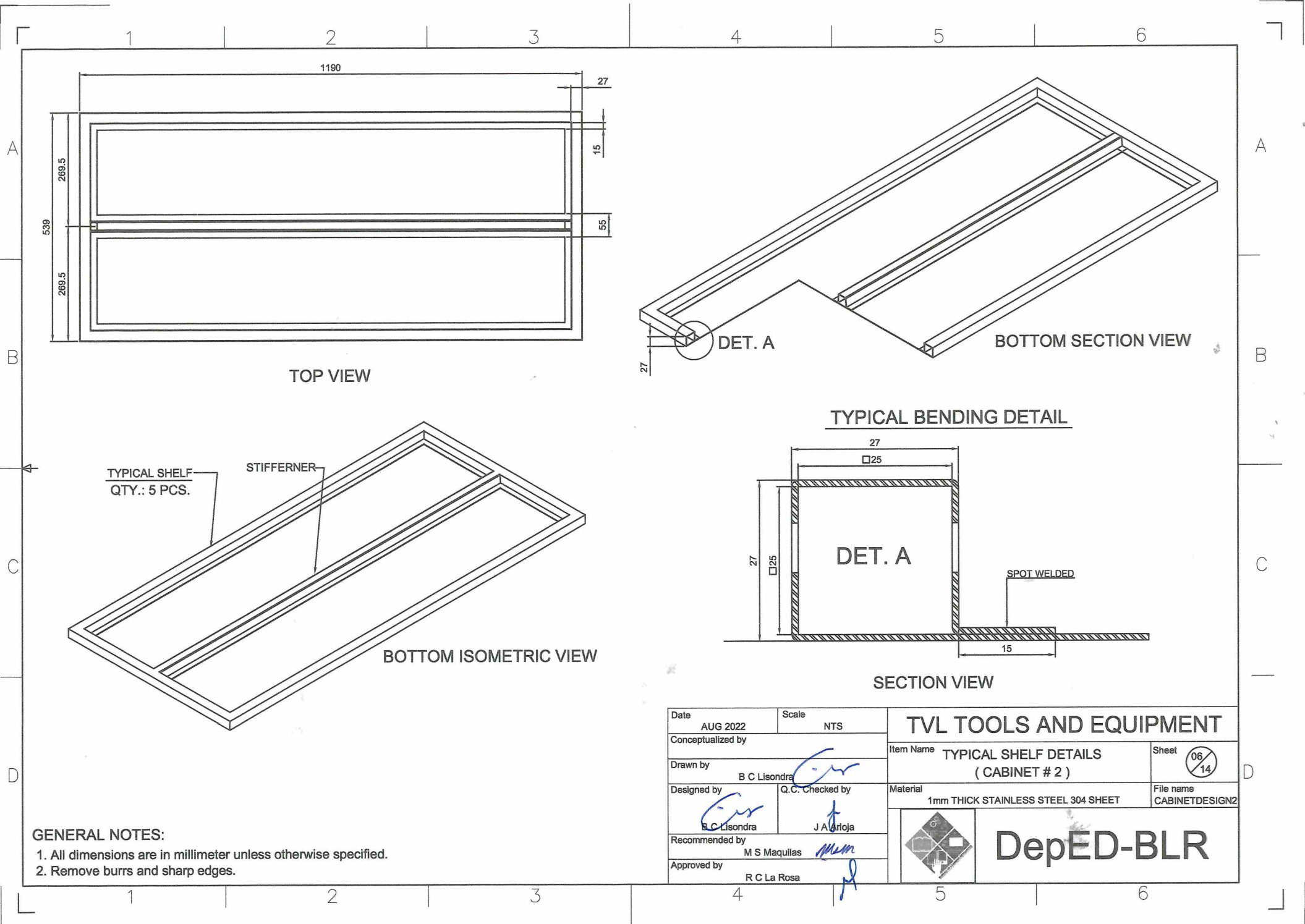


**GENERAL NOTES:**

1. All dimensions are in millimeter unless otherwise specified.
2. Remove burrs and sharp edges.

Date	AUG 2022	Scale	NTS	<b>TVL TOOLS AND EQUIPMENT</b>	
Conceptualized by					
Drawn by	<i>B C Lisondra</i>			Material	1mm THICK STAINLESS STEEL 304 SHEET
Designed by	<i>B C Lisondra</i>			File name	CABINETDESIGN2
Q.C. Checked by	<i>J A Grijota</i>			 <b>DepED-BLR</b>	
Recommended by	<i>M S Maquillas</i>				
Approved by	<i>R C La Rosa</i>				

Sheet **05/14**



TOP VIEW

BOTTOM SECTION VIEW

BOTTOM ISOMETRIC VIEW

TYPICAL BENDING DETAIL

SECTION VIEW

TYPICAL SHELF  
QTY.: 5 PCS.

STIFFENER


DET. A

DET. A

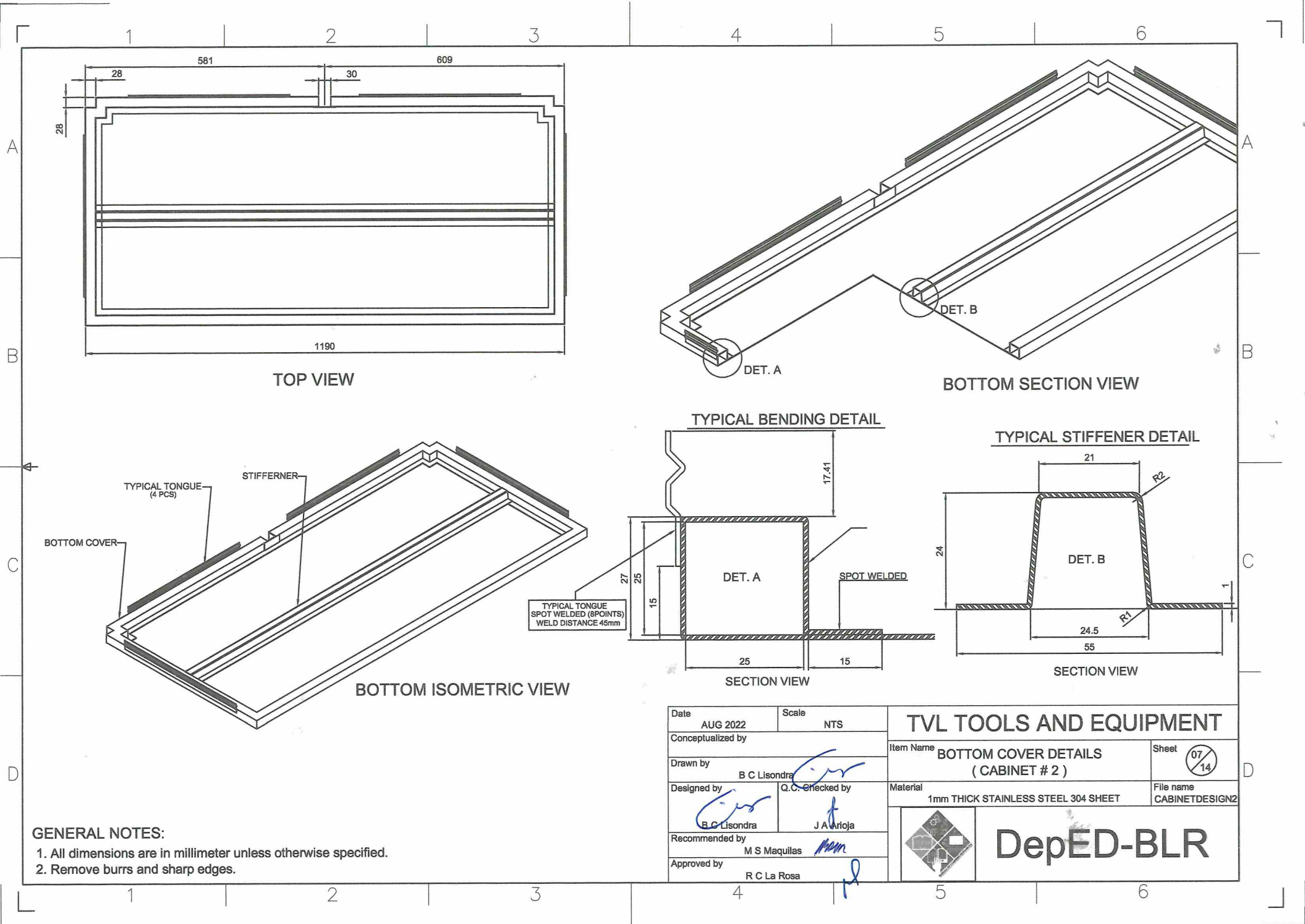
SPOT WELDED

**GENERAL NOTES:**

1. All dimensions are in millimeter unless otherwise specified.
2. Remove burrs and sharp edges.


Date AUG 2022	Scale NTS	<b>TVL TOOLS AND EQUIPMENT</b>	
Conceptualized by		Item Name TYPICAL SHELF DETAILS (CABINET # 2)	Sheet 06/14
Drawn by B C Lisondra		Material 1mm THICK STAINLESS STEEL 304 SHEET	File name CABINETDESIGN2
Designed by B C Lisondra	Q.C. Checked by J A Grijó	 <b>DepED-BLR</b>	
Recommended by M S Maquillas	Approved by R C La Rosa		



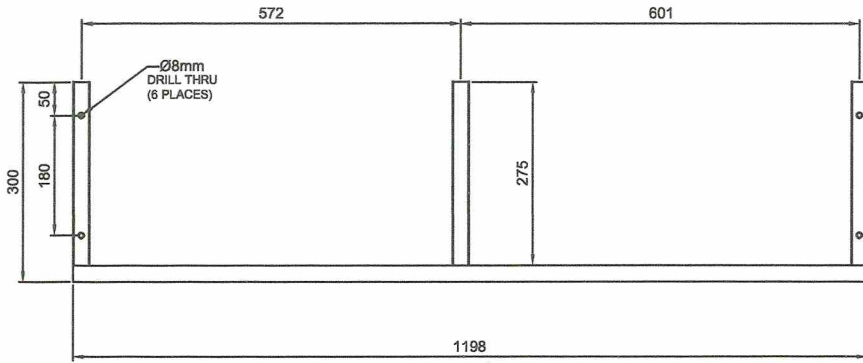


**GENERAL NOTES:**

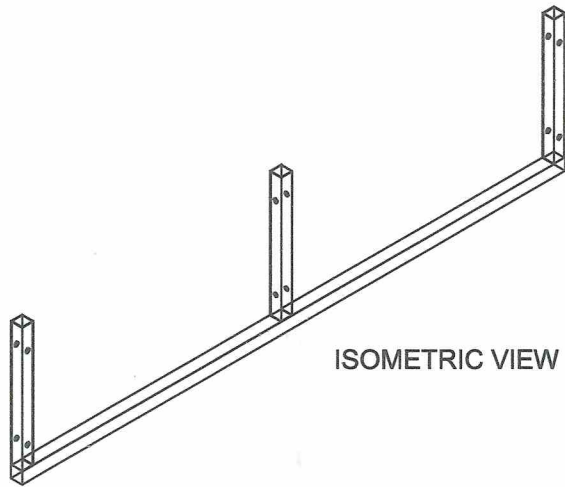
1. All dimensions are in millimeter unless otherwise specified.
2. Remove burrs and sharp edges.

Date AUG 2022	Scale NTS	<b>TVL TOOLS AND EQUIPMENT</b>	
Conceptualized by		Item Name BOTTOM COVER DETAILS (CABINET # 2)	Sheet 07 14
Drawn by B C Lisondra	Q.C. Checked by J A Vrijoja	Material 1mm THICK STAINLESS STEEL 304 SHEET	File name CABINETDESIGN2
Recommended by M S Maquillas	Approved by R C La Rosa	 <b>DepED-BLR</b>	

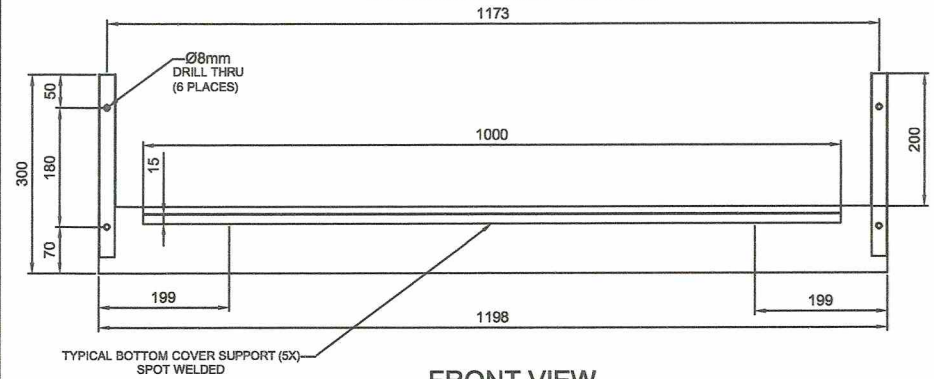
**REAR BASE FRAME**



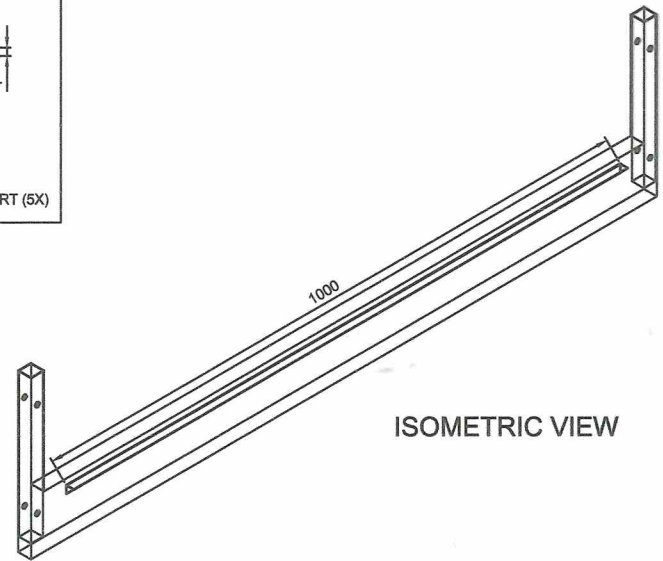
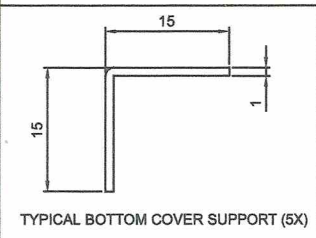
**FRONT VIEW**



**FRONT BASE FRAME**




**FRONT VIEW**

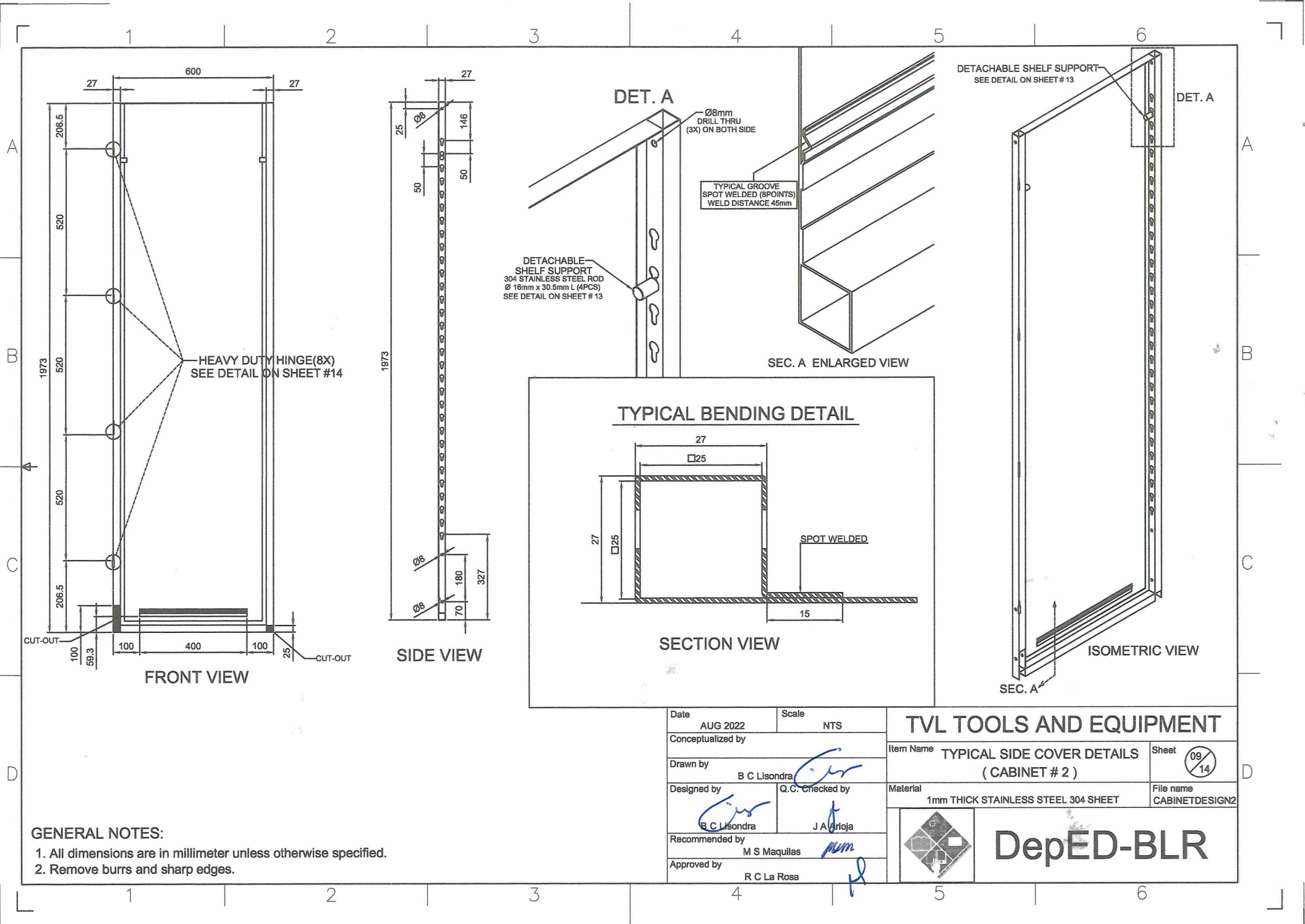


**GENERAL NOTES:**

1. All dimensions are in millimeter unless otherwise specified.
2. Remove burrs and sharp edges.


Date AUG 2022	Scale NTS	<b>TVL TOOLS AND EQUIPMENT</b>	
Conceptualized by		Item Name <b>BASE FRAME DETAILS (CABINET # 2)</b>	Sheet 08/14
Drawn by B C Lisondra	Designed by B C Lisondra	Material 1mm THICK STAINLESS STEEL 304 SHEET	File name CABINETDESIGN2
Recommended by M S Maquillas	Q.C. Checked by J A Mrojo	 <b>DepED-BLR</b>	
Approved by R C La Rosa			

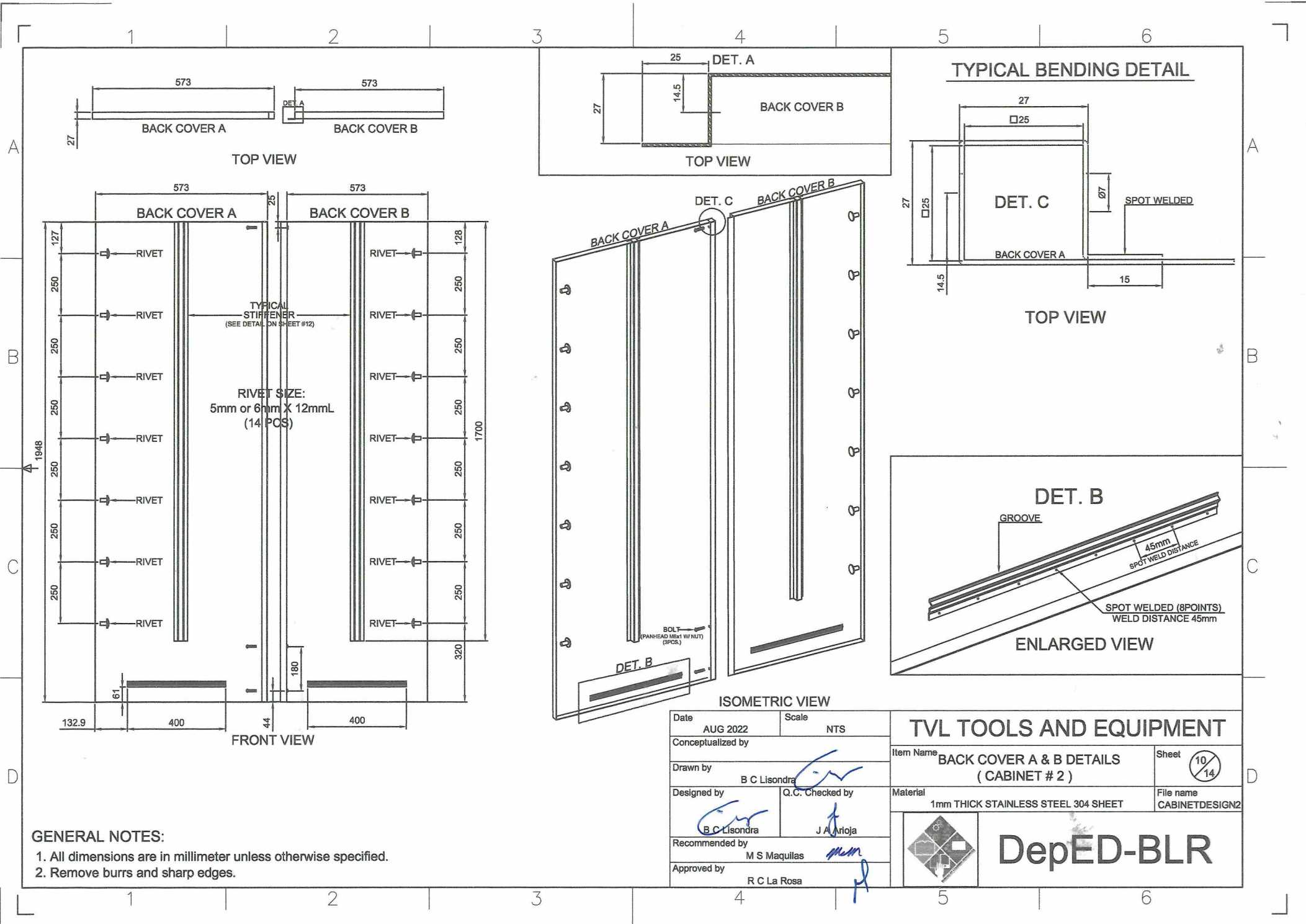




**GENERAL NOTES:**

- 1. All dimensions are in millimeter unless otherwise specified.
- 2. Remove burrs and sharp edges.

Date	AUG 2022	Scale	NTS	<b>TVL TOOLS AND EQUIPMENT</b>	
Conceptualized by		Item Name	TYPICAL SIDE COVER DETAILS ( CABINET # 2 )		
Drawn by	B C Lisondra	Material	1mm THICK STAINLESS STEEL 304 SHEET	File name	CABINETDESIGN2
Designed by	B C Lisondra	Q.C. Checked by	J A Artoja	 <b>DepED-BLR</b>	
Recommended by	M S Maquillas	Approved by	R C La Rosa		



TOP VIEW

TOP VIEW

TYPICAL BENDING DETAIL

TOP VIEW


ISOMETRIC VIEW

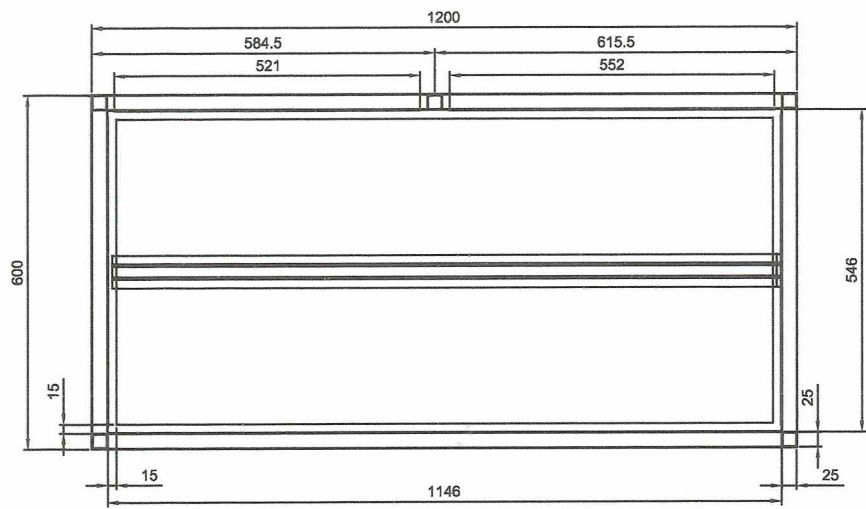
ENLARGED VIEW

FRONT VIEW

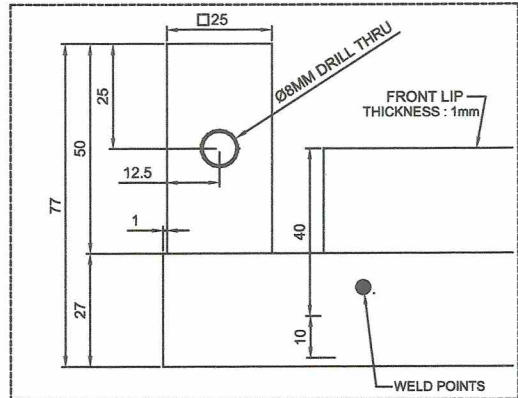
**GENERAL NOTES:**

1. All dimensions are in millimeter unless otherwise specified.
2. Remove burrs and sharp edges.

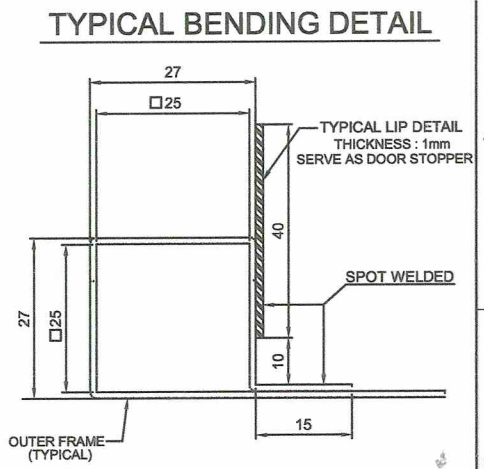
Date	AUG 2022	Scale	NTS	<b>TVL TOOLS AND EQUIPMENT</b>			
Conceptualized by						Item Name	BACK COVER A & B DETAILS (CABINET # 2)
Drawn by	B C Lisondra	Designed by	J A Arriola	Material	1mm THICK STAINLESS STEEL 304 SHEET	File name	CABINETDESIGN2
Recommended by	M S Maquillas	Approved by	R C La Rosa	 <b>DepED-BLR</b>			
Checked by	Q.C.						



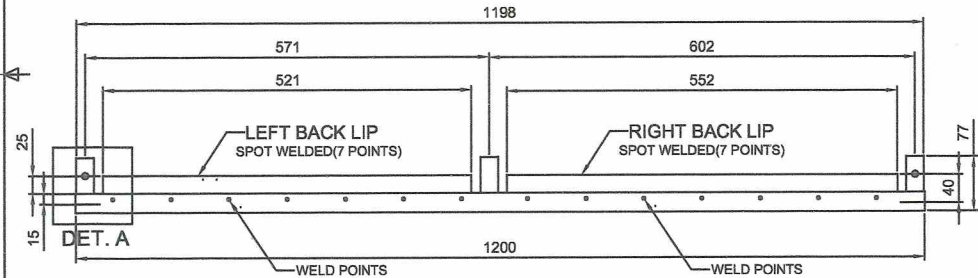
TOP VIEW



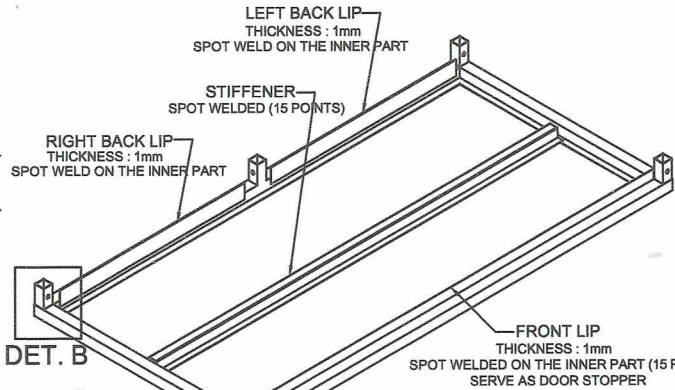
DET. A



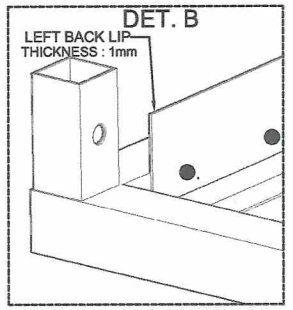
SECTION VIEW



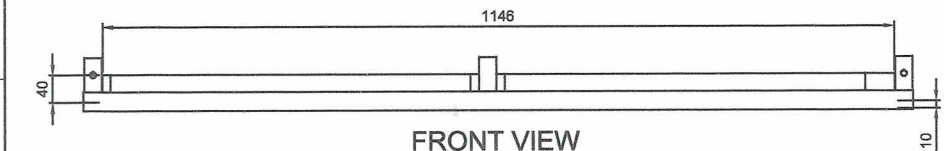
REAR VIEW



DET. B




ENLARGED VIEW



FRONT VIEW

BOTTOM ISOMETRIC VIEW

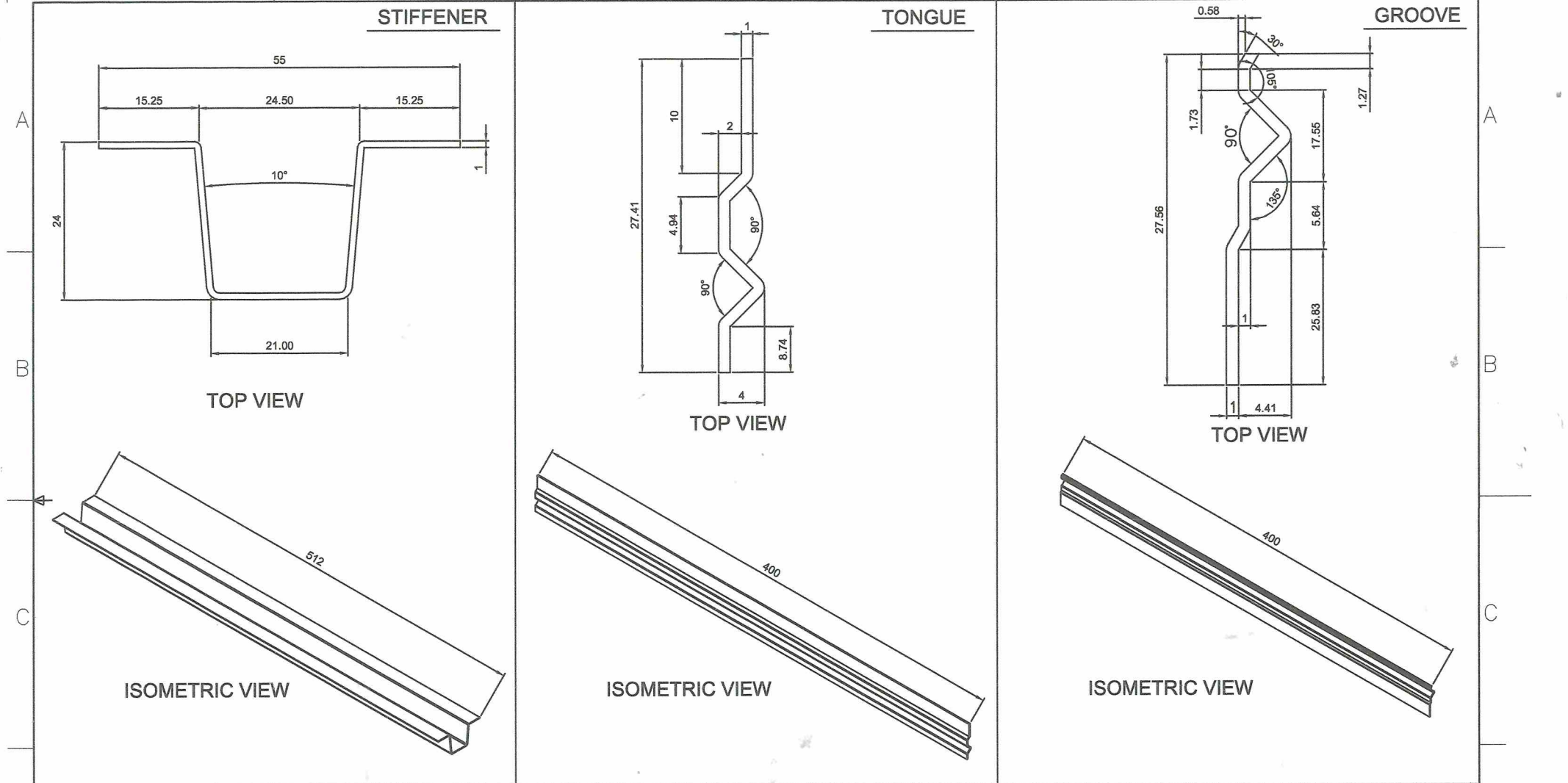
Date	AUG 2022	Scale	NTS	<b>TVL TOOLS AND EQUIPMENT</b>	
Conceptualized by		Item Name	TOP COVER DETAILS (CABINET # 2)		
Drawn by	B C Lisondra	Material	1mm THICK STAINLESS STEEL 304 SHEET	File name	CABINETDESIGN2
Designed by	B C Lisondra	Q.S. Checked by	J A Anjoja	 <b>DepED-BLR</b>	
Recommended by	M S Maquillas	Approved by	R C La Rosa		


**GENERAL NOTES:**

1. All dimensions are in millimeter unless otherwise specified.
2. Remove burrs and sharp edges.

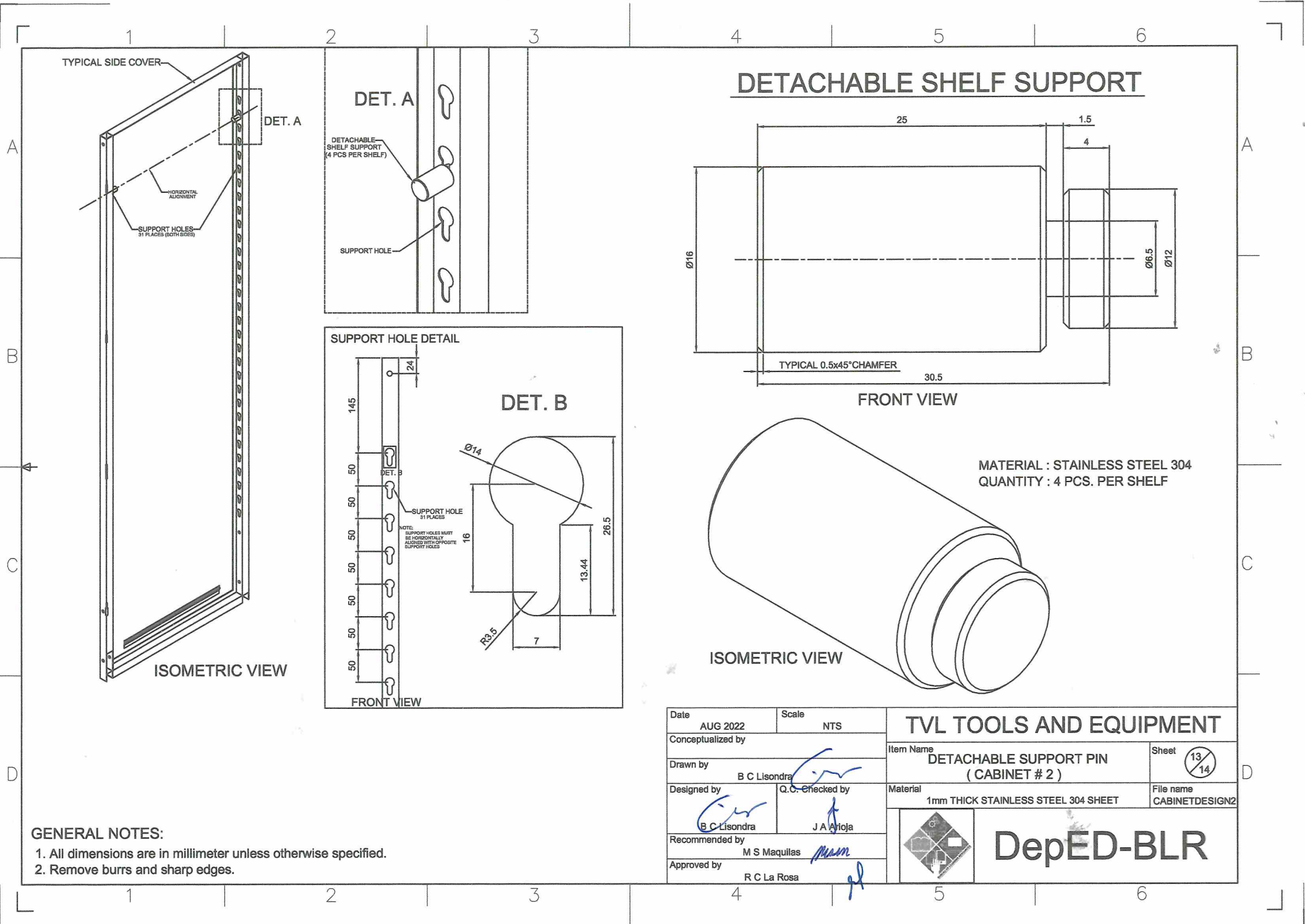


1 2 3 4 5 6

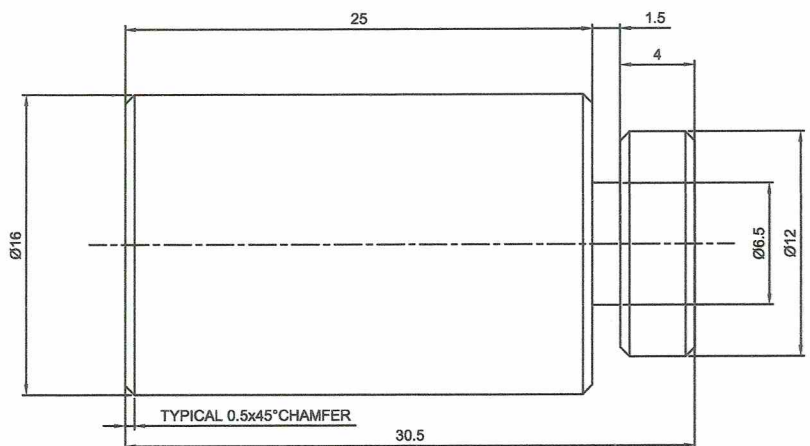


<p><b>GENERAL NOTES:</b></p> <p>1. All dimensions are in millimeter unless otherwise specified.</p> <p>2. Remove burrs and sharp edges.</p>	Date	AUG 2022	Scale	NTS	<p><b>TVL TOOLS AND EQUIPMENT</b></p>			
	Conceptualized by						Item Name	TYPICAL LOCKING & REINFORCEMENT DETAILS (CABINET # 2)
	Drawn by	B C Lisondra			Material	1mm THICK STAINLESS STEEL 304 SHEET	File name	CABINETDESIGN2
	Designed by	B C Lisondra			Q.C. Checked by	J A Grijó		
	Recommended by	M S Maquillas			 <p><b>DepED-BLR</b></p>			
Approved by	R C La Rosa							

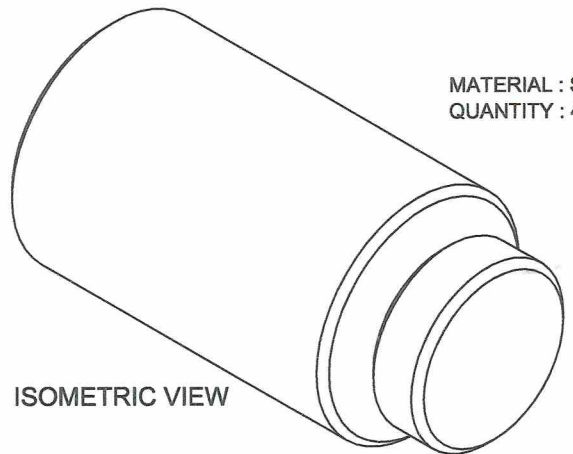
1 2 3 4 5 6



# DETACHABLE SHELF SUPPORT

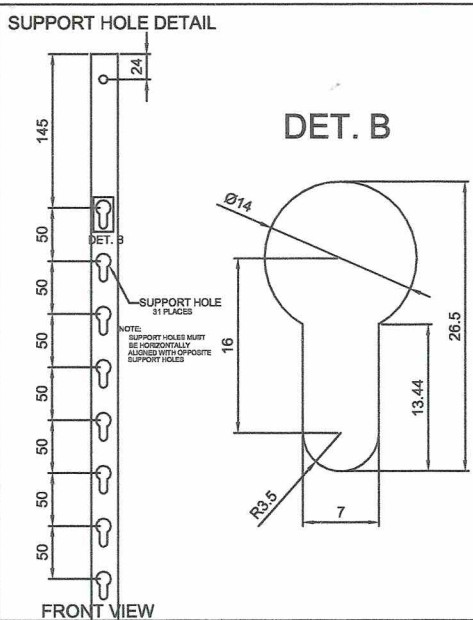
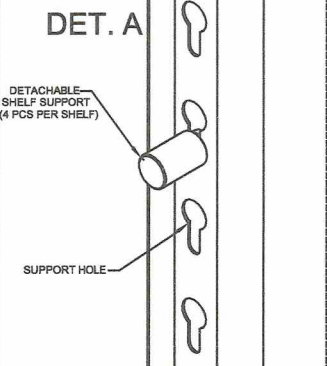


FRONT VIEW

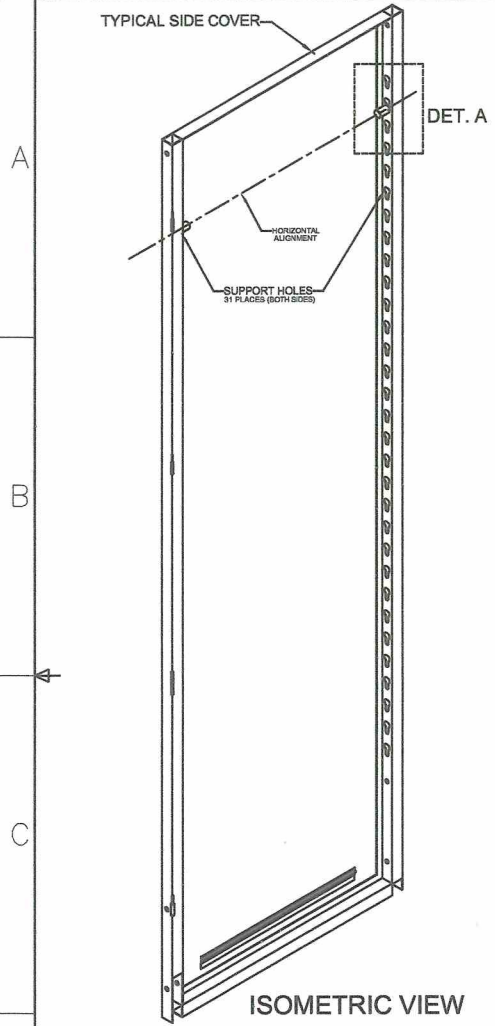


ISOMETRIC VIEW

MATERIAL : STAINLESS STEEL 304  
 QUANTITY : 4 PCS. PER SHELF




FRONT VIEW



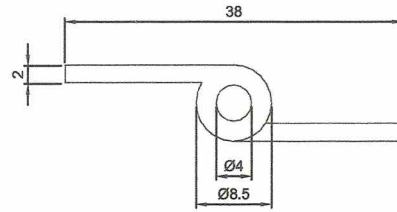
ISOMETRIC VIEW

**GENERAL NOTES:**  
 1. All dimensions are in millimeter unless otherwise specified.  
 2. Remove burrs and sharp edges.

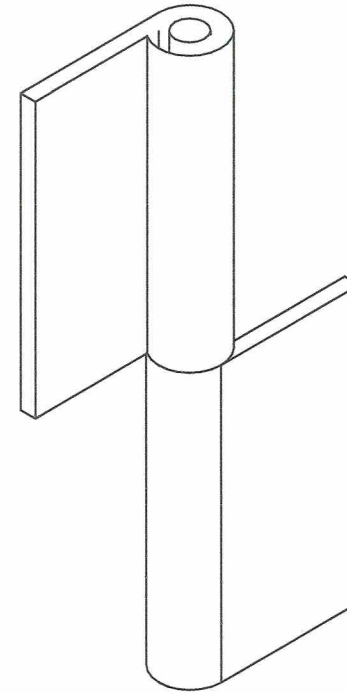
Date	AUG 2022	Scale	NTS	<b>TVL TOOLS AND EQUIPMENT</b>	
Conceptualized by				Item Name	DETACHABLE SUPPORT PIN (CABINET # 2)
Drawn by	B C Lisondra	Q.C. Checked by	J A Artoja	Material	1mm THICK STAINLESS STEEL 304 SHEET
Designed by	B C Lisondra	Recommended by	M S Maquillas	File name	CABINETDESIGN2
Approved by	R C La Rosa			 <b>DepED-BLR</b>	

# HEAVY DUTY DETACHABLE HINGES DETAIL

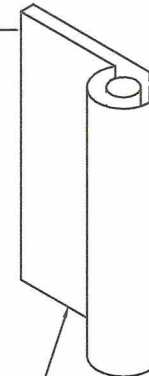
MATERIAL : STAINLESS STEEL 304  
 QUANTITY : 4pcs. RIGHT & 4pcs. LEFT HINGE



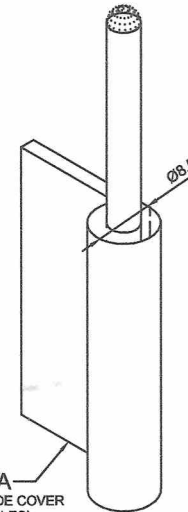
TOP VIEW



ISOMETRIC VIEW

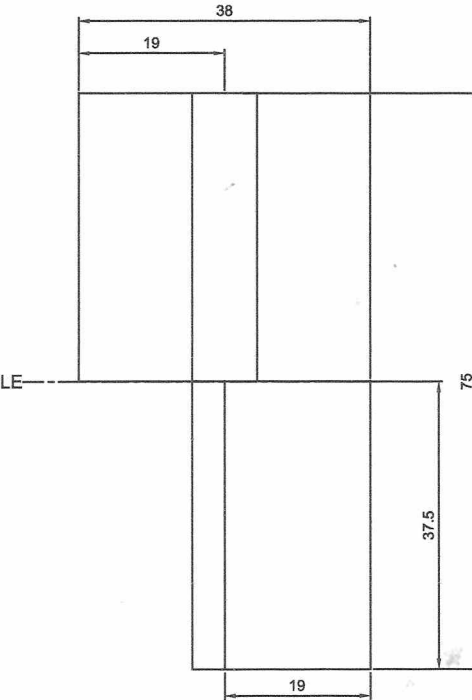


PART B  
 WELDED TO THE DOOR  
 (ON THE 3 HOLES)



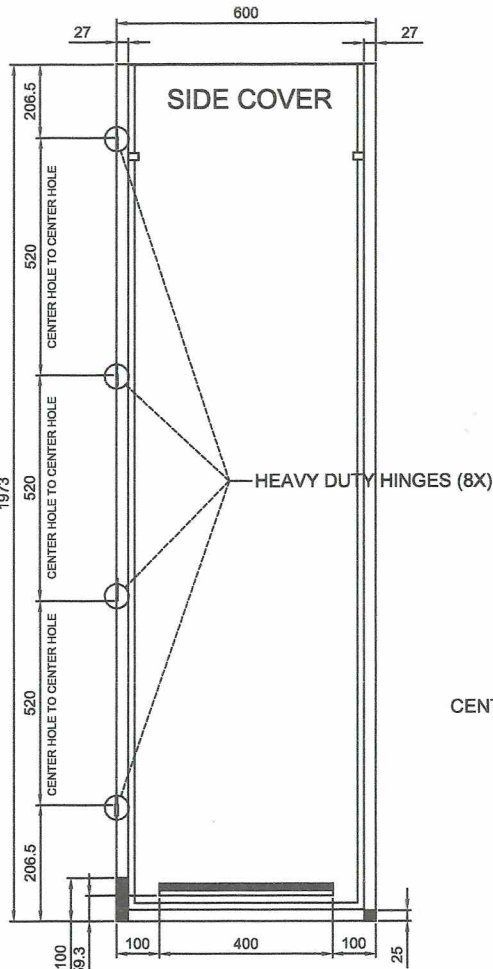
PART A  
 WELDED TO THE SIDE COVER  
 (ON THE 3 HOLES)

EXPLODED VIEW



FRONT VIEW

CENTER HOLE




FRONT VIEW

SIDE COVER

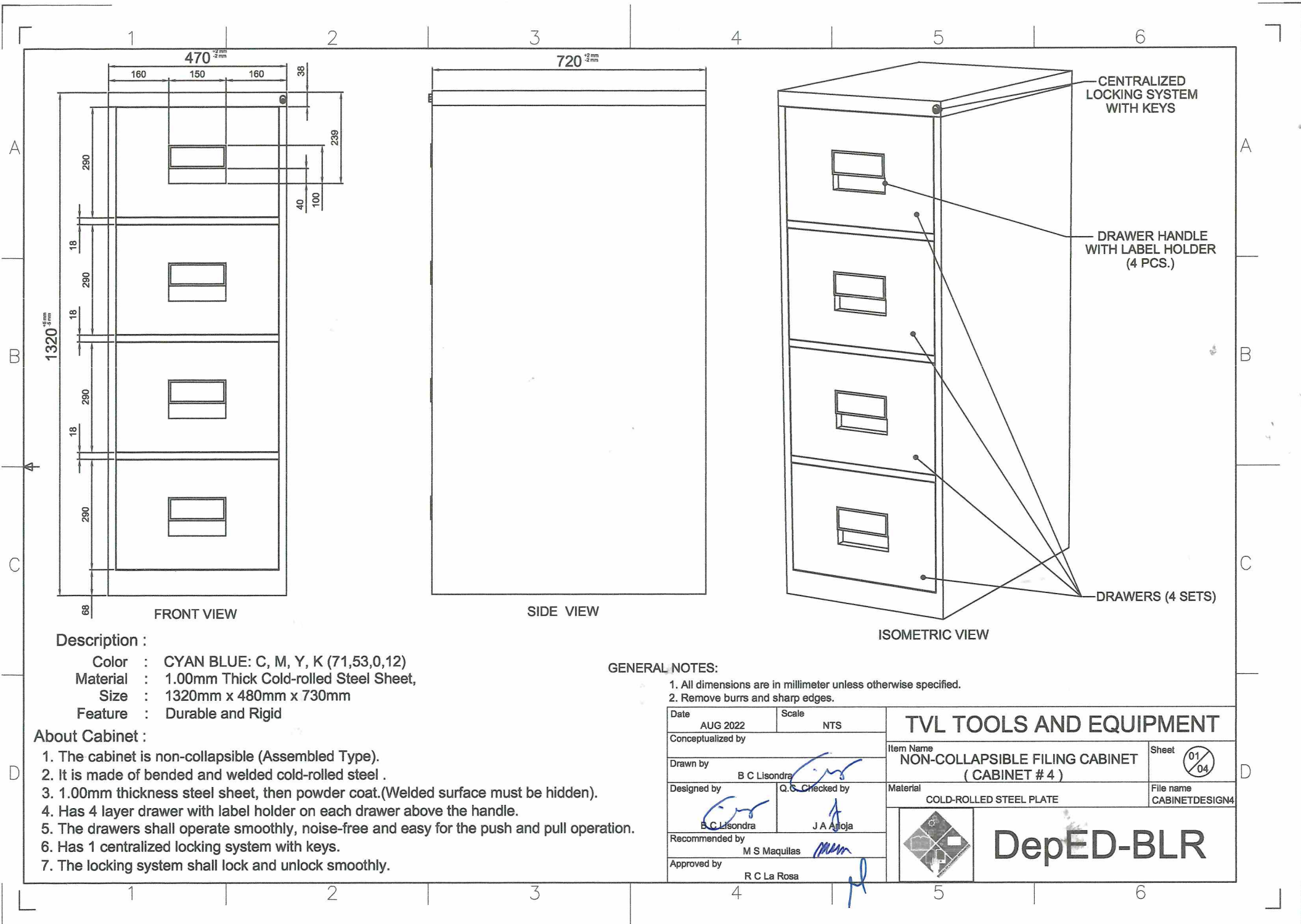
HEAVY DUTY HINGES (8X)

**GENERAL NOTES:**

1. All dimensions are in millimeter unless otherwise specified.
2. Remove burrs and sharp edges.

Date AUG 2022	Scale NTS	<b>TVL TOOLS AND EQUIPMENT</b>	
Conceptualized by		Item Name DETACHABLE HINGE DETAILS (CABINET # 2)	Sheet 14/14
Drawn by B C Lisondra	Designed by B C Lisondra	Material 1mm THICK STAINLESS STEEL 304 SHEET	File name CABINETDESIGN2
Q.C. Checked by J A Anjoja	Recommended by M S Maquillas	 <b>DepED-BLR</b>	
Approved by R C La Rosa			





**Description :**

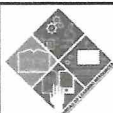
- Color : CYAN BLUE: C, M, Y, K (71,53,0,12)
- Material : 1.00mm Thick Cold-rolled Steel Sheet,
- Size : 1320mm x 480mm x 730mm
- Feature : Durable and Rigid

**About Cabinet :**

1. The cabinet is non-collapsible (Assembled Type).
2. It is made of bended and welded cold-rolled steel .
3. 1.00mm thickness steel sheet, then powder coat.(Welded surface must be hidden).
4. Has 4 layer drawer with label holder on each drawer above the handle.
5. The drawers shall operate smoothly, noise-free and easy for the push and pull operation.
6. Has 1 centralized locking system with keys.
7. The locking system shall lock and unlock smoothly.

**GENERAL NOTES:**

1. All dimensions are in millimeter unless otherwise specified.
2. Remove burrs and sharp edges.

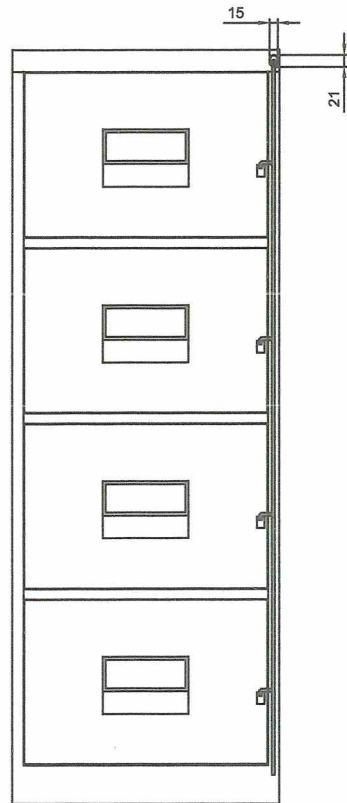
Date AUG 2022	Scale NTS	<b>TVL TOOLS AND EQUIPMENT</b>	
Conceptualized by		Item Name <b>NON-COLLAPSIBLE FILING CABINET ( CABINET # 4 )</b>	Sheet 01/04
Drawn by B C Lisondra	Q.C. Checked by J A Ajoja	Material COLD-ROLLED STEEL PLATE	File name CABINETDESIGN4
Recommended by M S Maquillas	Approved by R C La Rosa	 <b>DepED-BLR</b>	

1 2 3 4 5 6

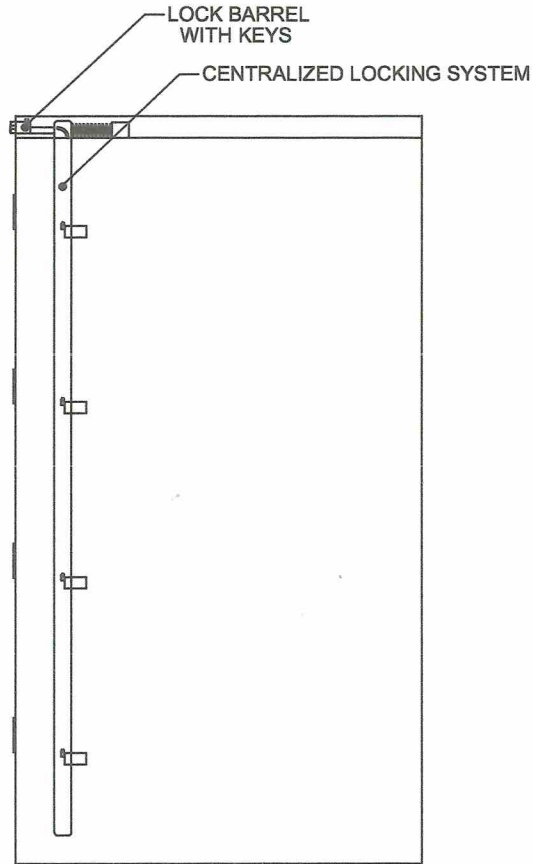
A

B

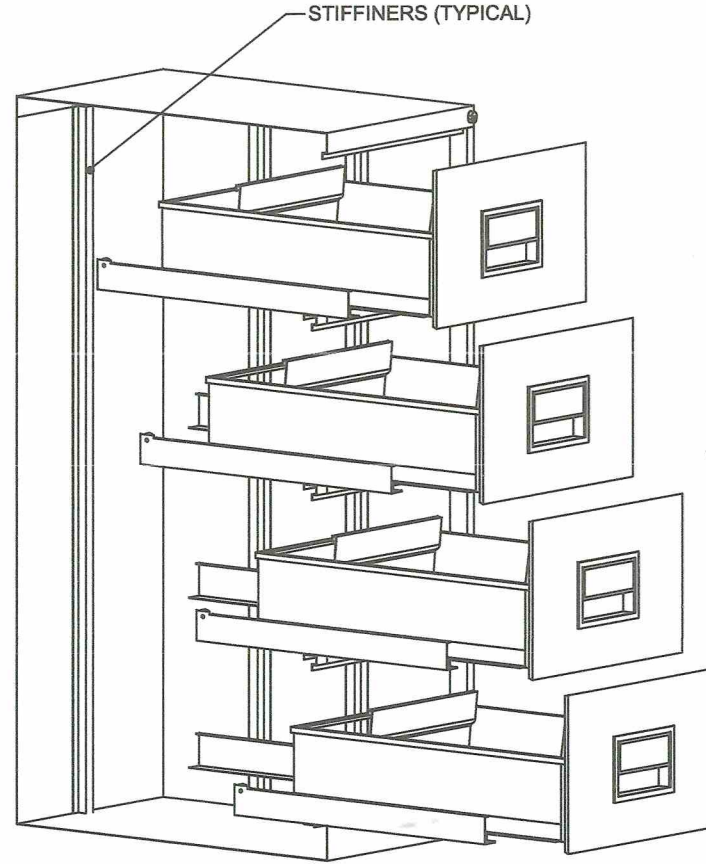
C



FRONT VIEW



SIDE VIEW



ISOMETRIC VIEW

A

B


C

**CENTRALIZED LOCKING SYSTEM :**

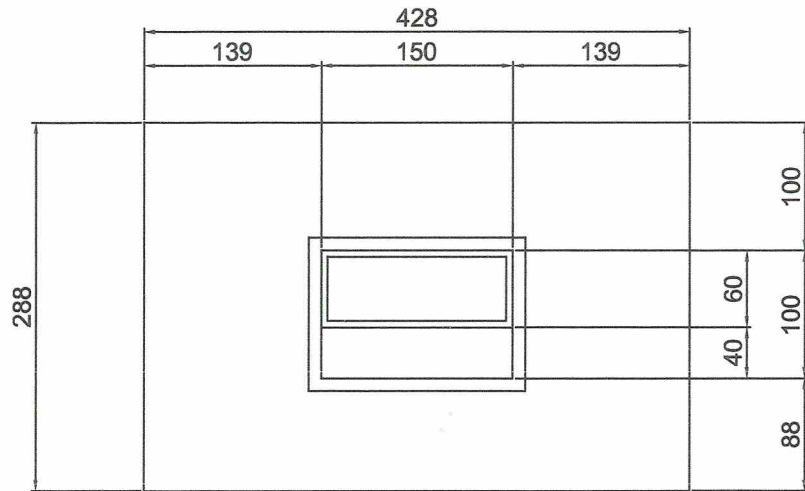
1. Has 1 centralized locking system with keys.
2. The locking system shall lock and unlock smoothly.
3. The locking system shall lock and unlock the 4 drawers simultaneously.
4. Push lock barrel to lock all drawers the use the key to unlock.
5. The locking system should be strong and will not easily break.

**GENERAL NOTES:**

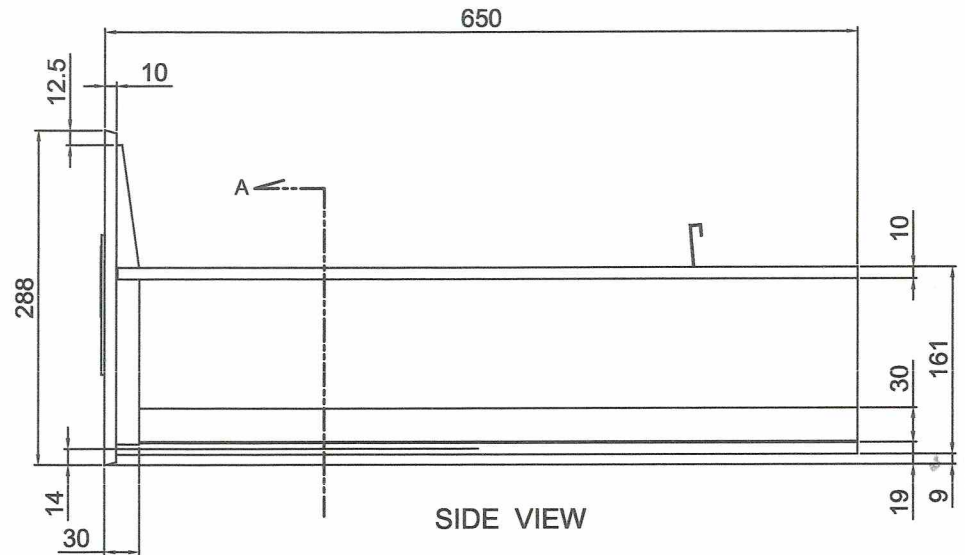
1. All dimensions are in millimeter unless otherwise specified.
2. Remove burrs and sharp edges.

Date AUG 2022	Scale NTS	<b>TVL TOOLS AND EQUIPMENT</b>	
Conceptualized by		Item Name <b>NON-COLLAPSIBLE FILING CABINET ( CABINET # 4 )</b>	Sheet 02/04
Drawn by B C Lisondra	Q.C. Checked by J A Artoja	Material COLD-ROLLED STEEL PLATE	File name CABINETDESIGN4
Recommended by M S Maquillas	Approved by R C La Rosa	 <b>DepED-BLR</b>	

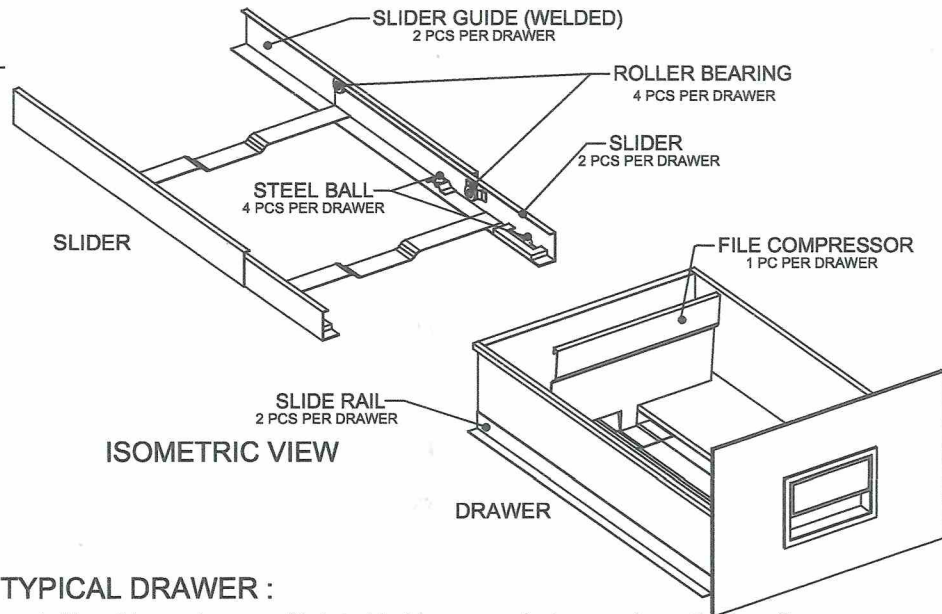
1 2 3 4 5 6



FRONT VIEW



SIDE VIEW



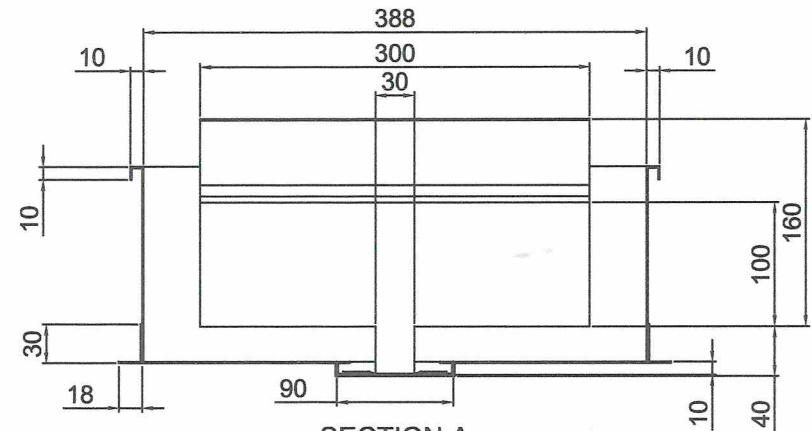
ISOMETRIC VIEW

TYPICAL DRAWER :

1. Has 4 layer drawer with label holder on each drawer above the handle.
2. The drawers shall operate smoothly, noise-free and easy for the push and pull operation.

GENERAL NOTES:

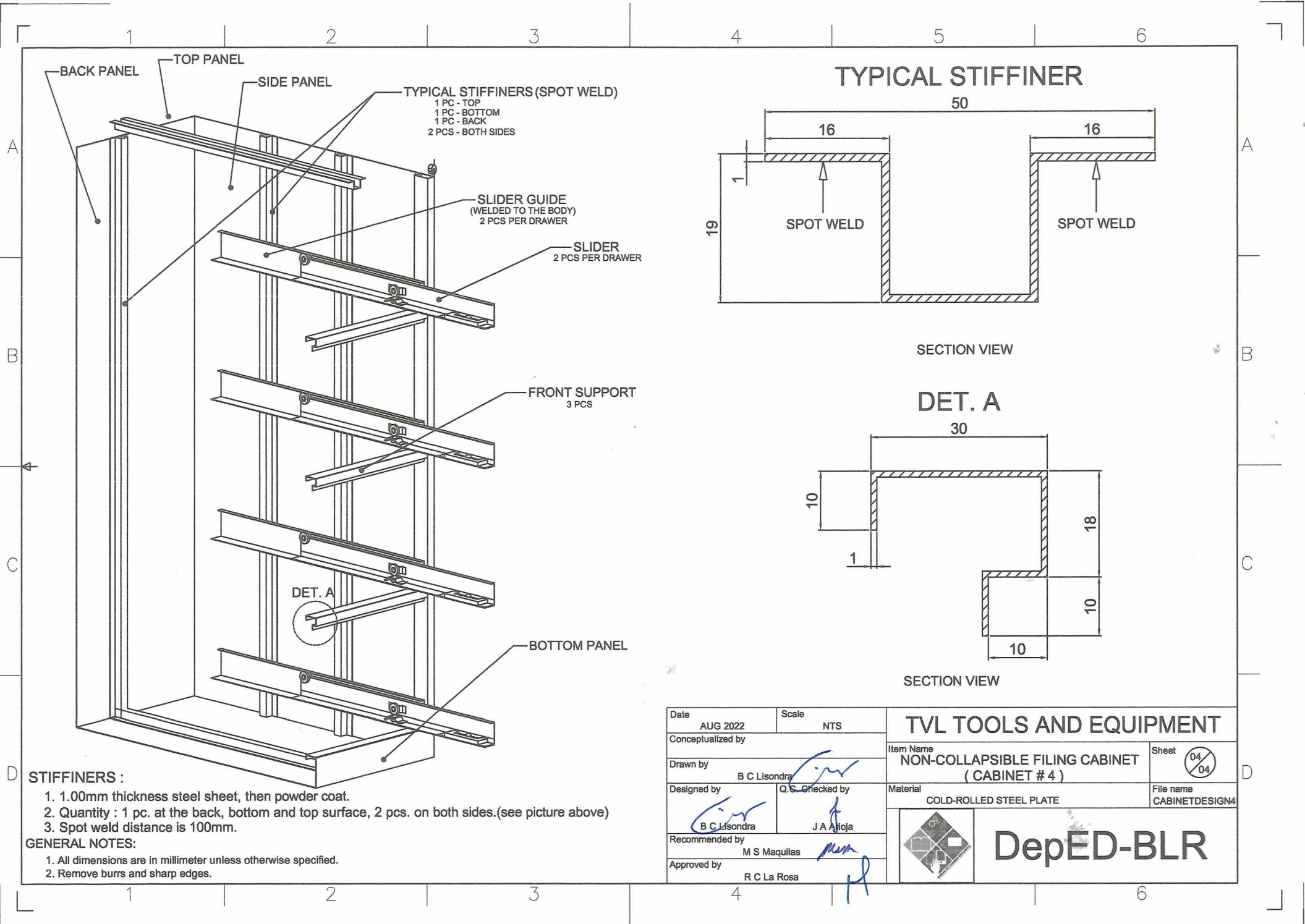
1. All dimensions are in millimeter unless otherwise specified.
2. Remove burrs and sharp edges.



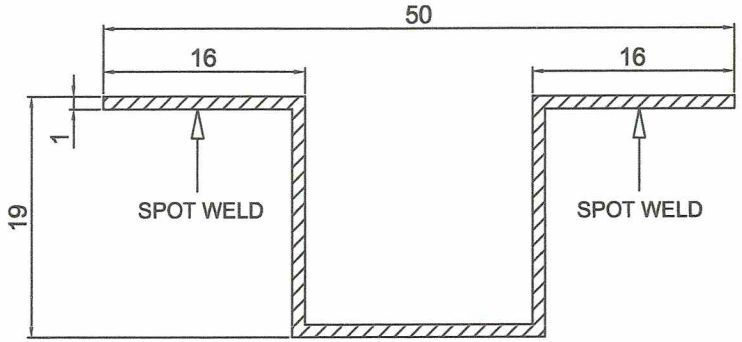
SECTION A

Date	AUG 2022	Scale	NTS	<b>TVL TOOLS AND EQUIPMENT</b>	
Conceptualized by					
Drawn by	B C Lisondra			NON-COLLAPSIBLE FILING CABINET ( CABINET # 4 )	03/04
Designed by	Q.S. Checked by			Material	File name
B C Lisondra	J A A Hoja			COLD-ROLLED STEEL PLATE	CABINETDESIGN4
Recommended by	M S Maquillas			 <b>DepED-BLR</b>	
Approved by	R C La Rosa				



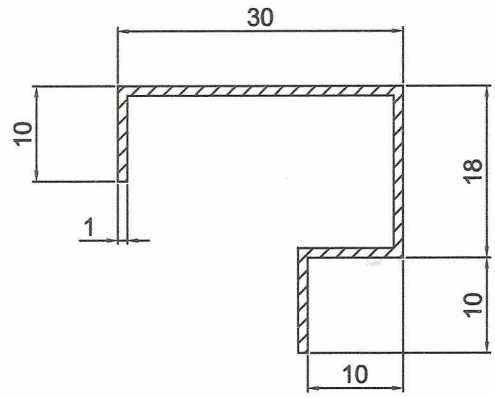


**TYPICAL STIFFENER**



SECTION VIEW

**DET. A**




SECTION VIEW

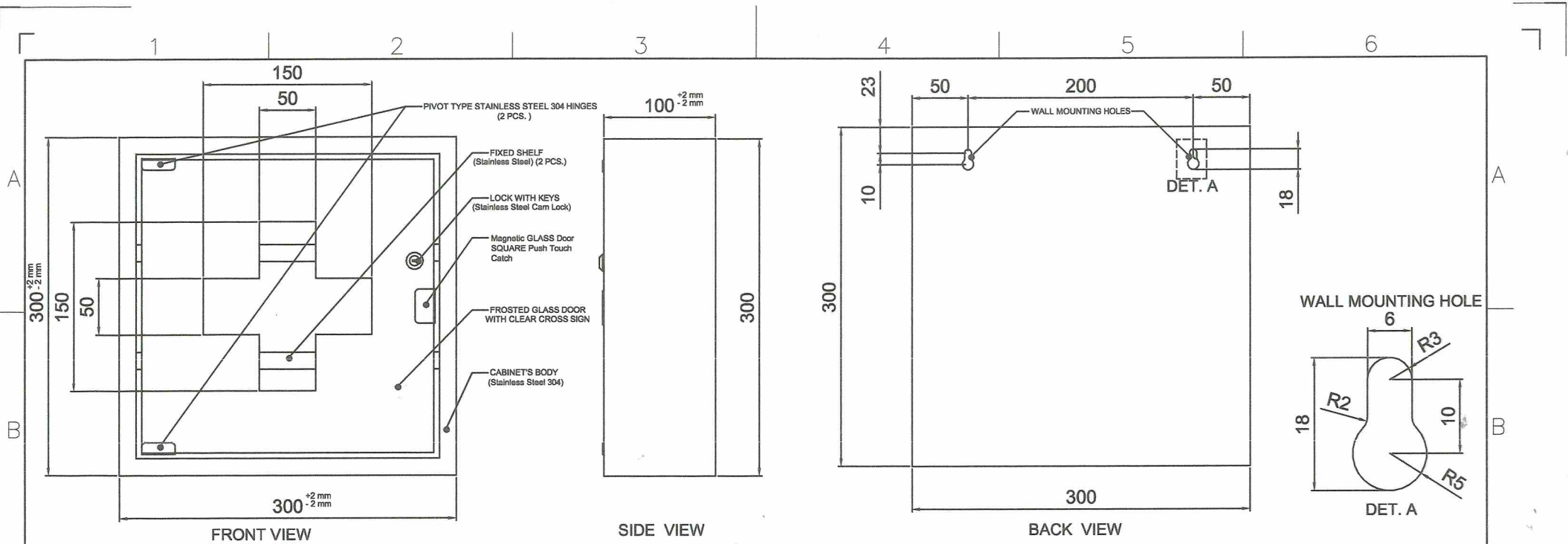
**STIFFENERS :**

1. 1.00mm thickness steel sheet, then powder coat.
2. Quantity : 1 pc. at the back, bottom and top surface, 2 pcs. on both sides.(see picture above)
3. Spot weld distance is 100mm.

**GENERAL NOTES:**

1. All dimensions are in millimeter unless otherwise specified.
2. Remove burrs and sharp edges.

Date AUG 2022	Scale NTS	<b>TVL TOOLS AND EQUIPMENT</b>	
Conceptualized by		Item Name <b>NON-COLLAPSIBLE FILING CABINET ( CABINET # 4 )</b>	Sheet 04/04
Drawn by B C Lisondra	Q.C. Checked by J A Arjoja	Material COLD-ROLLED STEEL PLATE	File name CABINETDESIGN4
Recommended by M S Maquillas	Approved by R C La Rosa	 <b>DepED-BLR</b>	

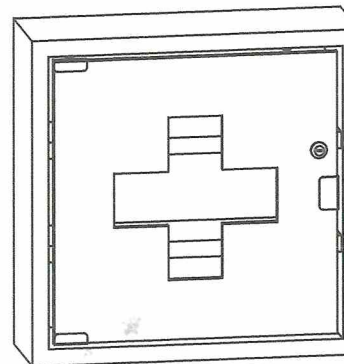


**Description :**

- Finish : Polished
- Material : 1.00mm Thick Stainless Steel 304 Sheet
- Size : 300mm x 300mm x 100mm
- Feature : Durable and Rigid


**About Cabinet :**

1. The cabinet body's material is 1.00mm thickness stainless steel 304 sheet then polished.
2. The cabinet is wall mounted.  
(includes 2pcs. 5mm diameter screws for mounting).
3. There are 2 fixed shelves.(Stainless Steel 304)
4. 1 set lock with keys.(Stainless steel cam lock)
5. With hinge.(Pivot Type Press-Fit Glass Door Hinge 2 pcs.)
6. With magnetic glass door SQUARE Push Touch Catch
7. 6mm thick frosted glass door with clear cross sign at the center.
8. Assembled type cabinet.



**GENERAL NOTES:**

1. All dimensions are in millimeter unless otherwise specified.
2. Remove burrs and sharp edges.

Date AUG 2022		Scale NTS		<b>TVL TOOLS AND EQUIPMENT</b>	
Conceptualized by					
Drawn by B C Lisondra		Q.O. Checked by J A Antoja		Material STAINLESS STEEL 304 SHEET	
Designed by B C Lisondra		Recommended by M S Maquilas		File name CABINETDESIGN5	
Approved by R C La Rosa				 <b>DepED-BLR</b>	