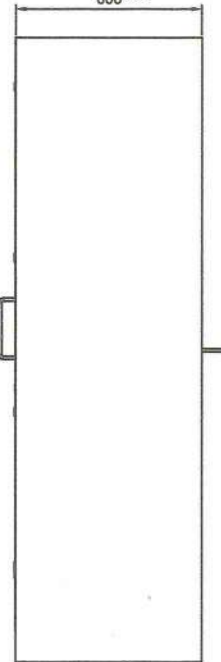
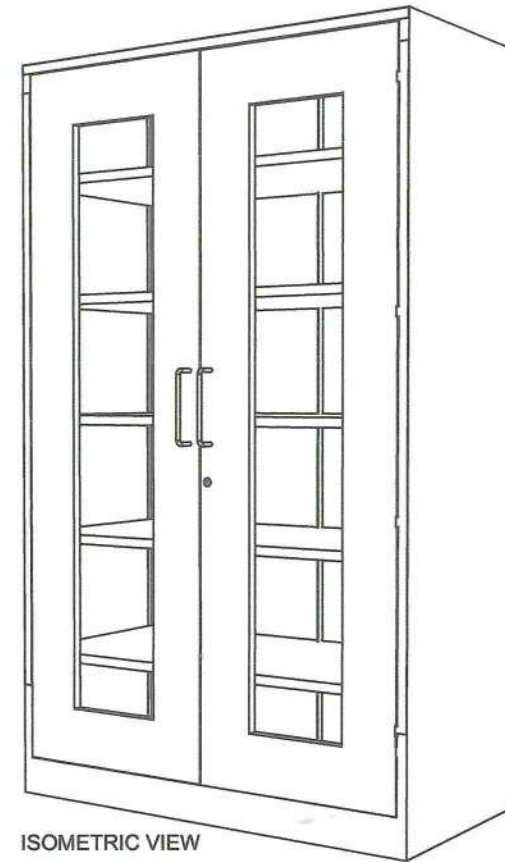


FRONT VIEW



SIDE VIEW



ISOMETRIC VIEW

Description :

- Finish : Polished
- Material : 1.00mm Thick Stainless Steel 304 Sheet, 6mm thick Flexi-Glass Door
- Size : 2.0 meters x 1.20 meters x 0.6 meters
- Feature : Durable and Rigid

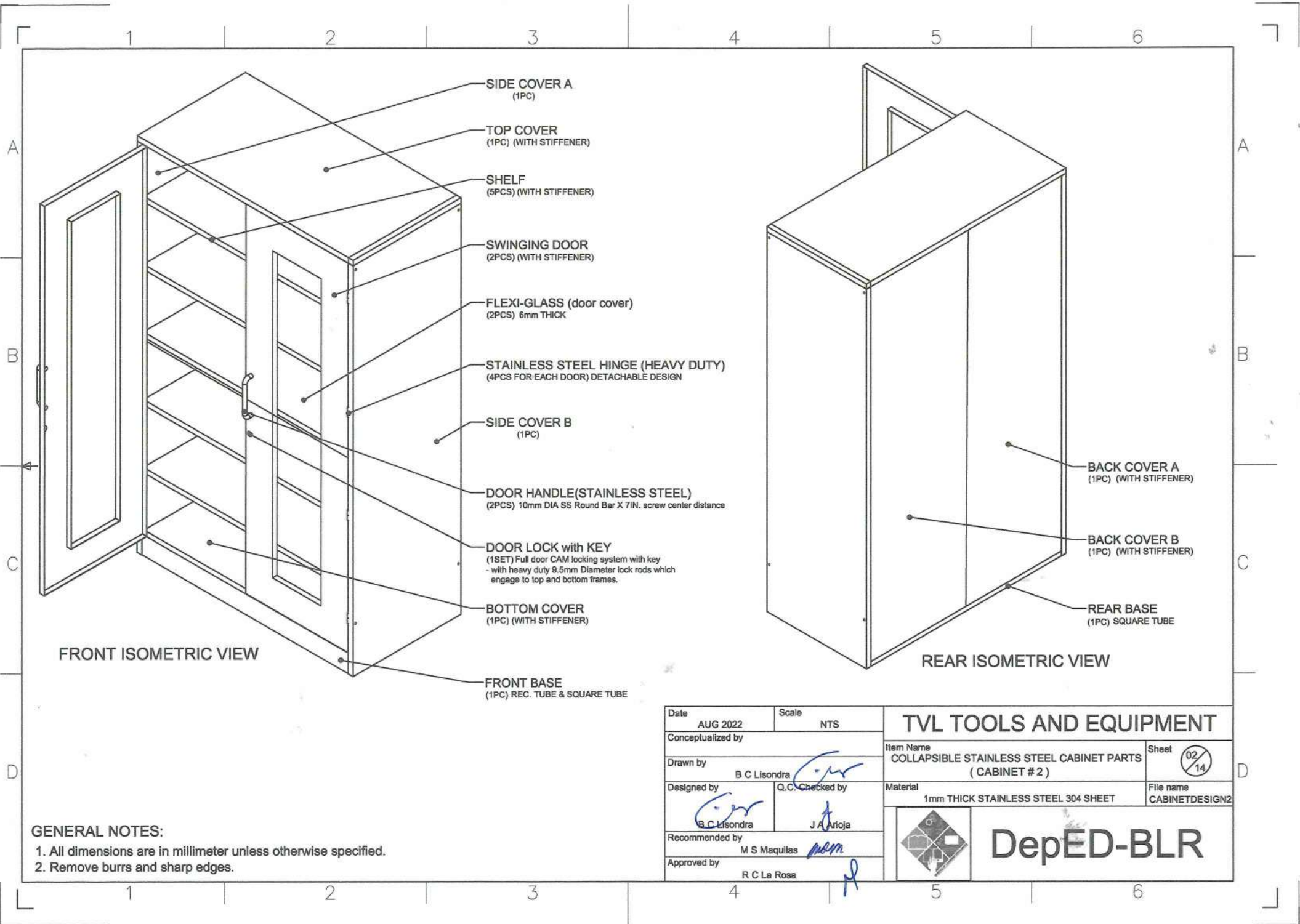
About Cabinet :

1. 1.00mm thickness stainless steel 304 sheet then polished.
2. The cabinet body's material is stainless steel 304.
3. 2 Swinging flexi-glass doors with 2pcs stainless steel 304 handle bars(10mm diameter Stainless Steel 304 Round Bar x 7in. screw mounted in between center.
* 1 set (Full door 3 way CAM locking system w/ key), and 4 heavy duty detachable hinges(3 inches long) on each door.
4. 5 Adjustable and detachable shelves with support set.
5. Bolts and nuts must be installed as fasteners.
6. Tongue and groove must be provided to interlock the bottom cover(tongue), side panels and back panels (groove).
7. The 3 way CAM Locking system of the collapsible cabinet door is subject for approval during sample evaluation.
8. Cabinet must be mounted on the WALL using 2pcs. Ø3/8 inches x 2 inches METAL EXPANSION BOLT with Ø20mm x 2mm thick washer.

GENERAL NOTES:


1. All dimensions are in millimeter unless otherwise specified.
2. Remove burrs and sharp edges.

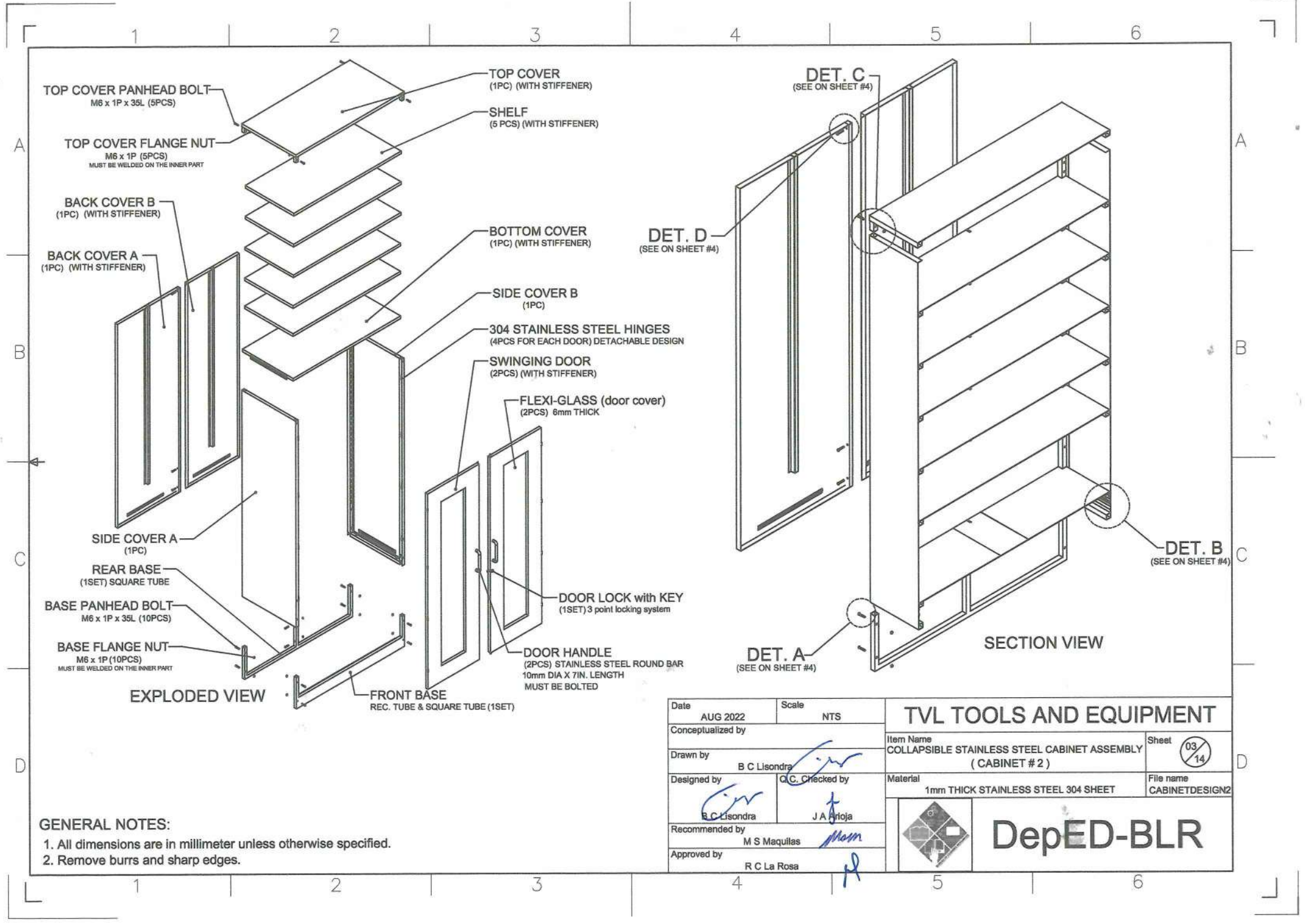
Date AUG 2022	Scale NTS	TVL TOOLS AND EQUIPMENT	
Conceptualized by		Item Name COLLAPSIBLE STAINLESS STEEL CABINET (CABINET # 2)	Sheet 01 / 14
Drawn by B C Lisondra	Q.C. Checked by J A Mroja	Material 1mm THICK STAINLESS STEEL 304 SHEET	File name CABINETDESIGN2
Designed by B C Lisondra	Recommended by M S Maquillas	 DepED-BLR	
Approved by R C La Rosa			



GENERAL NOTES:

1. All dimensions are in millimeter unless otherwise specified.
2. Remove burrs and sharp edges.

Date	AUG 2022	Scale	NTS	TVL TOOLS AND EQUIPMENT	
Conceptualized by					
Drawn by	B C Lisondra			COLLAPSIBLE STAINLESS STEEL CABINET PARTS (CABINET # 2)	02/14
Designed by	B C Lisondra	Q.C. Checked by	J A Artoja	Material	File name
Recommended by	M S Maquillas			1mm THICK STAINLESS STEEL 304 SHEET	CABINETDESIGN2
Approved by	R C La Rosa			 DepED-BLR	



TOP COVER PANHEAD BOLT
M6 x 1P x 35L (5PCS)

TOP COVER FLANGE NUT
M6 x 1P (5PCS)
MUST BE WELDED ON THE INNER PART

BACK COVER B
(1PC) (WITH STIFFENER)

BACK COVER A
(1PC) (WITH STIFFENER)

SIDE COVER A
(1PC)

REAR BASE
(1SET) SQUARE TUBE

BASE PANHEAD BOLT
M6 x 1P x 35L (10PCS)

BASE FLANGE NUT
M6 x 1P (10PCS)
MUST BE WELDED ON THE INNER PART

EXPLODED VIEW

TOP COVER
(1PC) (WITH STIFFENER)

SHELF
(5 PCS) (WITH STIFFENER)

BOTTOM COVER
(1PC) (WITH STIFFENER)

SIDE COVER B
(1PC)

304 STAINLESS STEEL HINGES
(4PCS FOR EACH DOOR) DETACHABLE DESIGN

SWINGING DOOR
(2PCS) (WITH STIFFENER)

FLEXI-GLASS (door cover)
(2PCS) 6mm THICK

DOOR LOCK with KEY
(1SET) 3 point locking system

DOOR HANDLE
(2PCS) STAINLESS STEEL ROUND BAR
10mm DIA X 7IN. LENGTH
MUST BE BOLTED

FRONT BASE
REC. TUBE & SQUARE TUBE (1SET)

DET. C
(SEE ON SHEET #4)

DET. D
(SEE ON SHEET #4)


DET. A
(SEE ON SHEET #4)

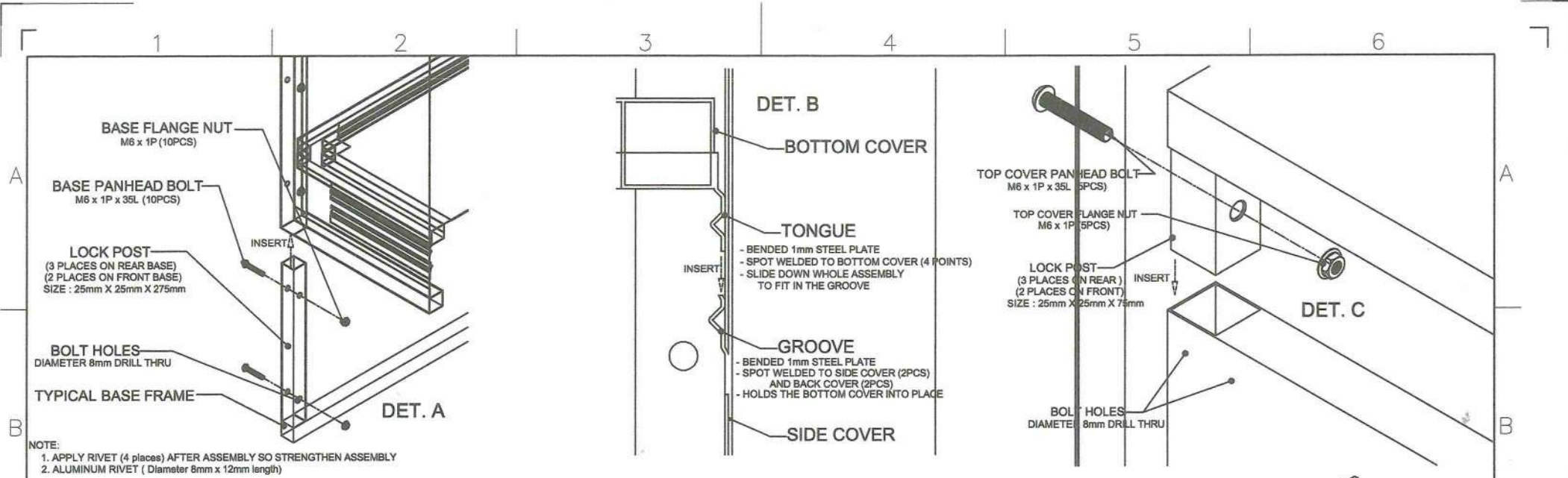
DET. B
(SEE ON SHEET #4)

SECTION VIEW

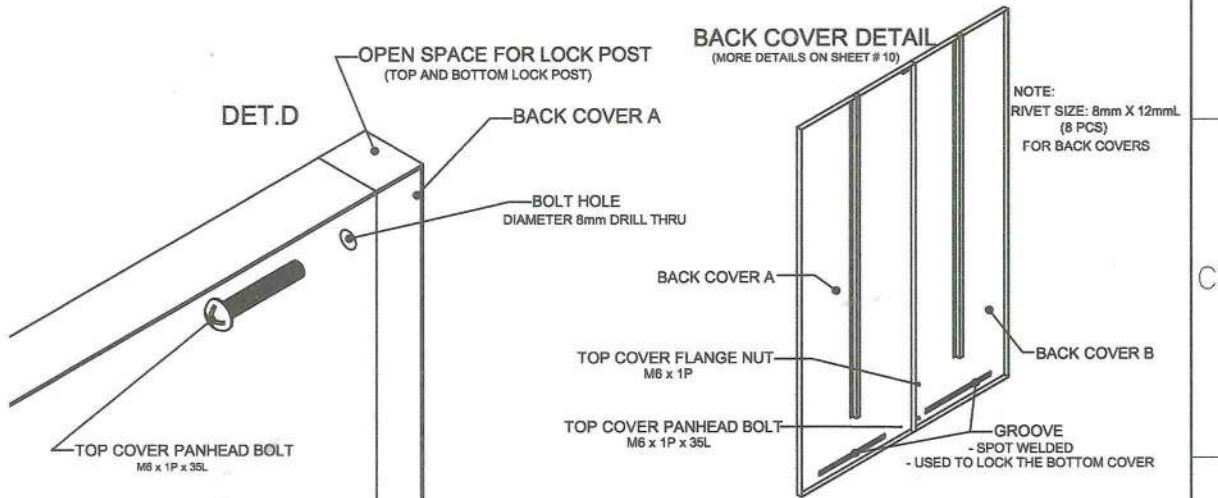
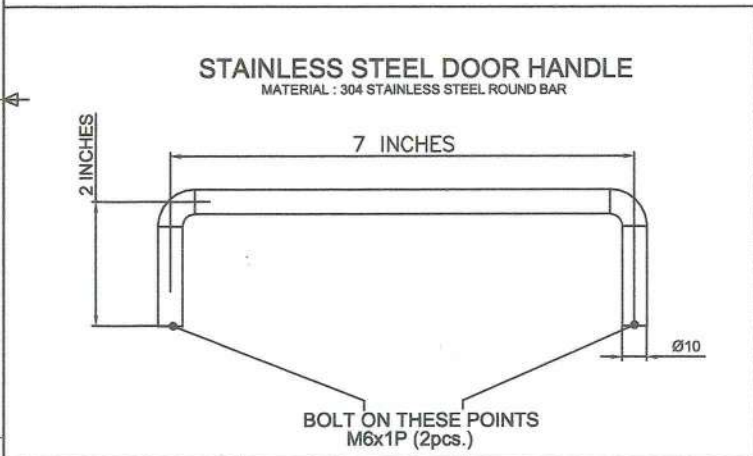
GENERAL NOTES:

- All dimensions are in millimeter unless otherwise specified.
- Remove burrs and sharp edges.


Date	AUG 2022	Scale	NTS	TVL TOOLS AND EQUIPMENT	
Conceptualized by				Item Name	COLLAPSIBLE STAINLESS STEEL CABINET ASSEMBLY (CABINET # 2)
Drawn by	B C Lisondra	Checked by	J A Arjoja	Sheet	03/14
Designed by	B C Lisondra	Recommended by	M S Maquillas	Material	1mm THICK STAINLESS STEEL 304 SHEET
Approved by	R C La Rosa	File name	CABINETDESIGN2		
				 DepED-BLR	

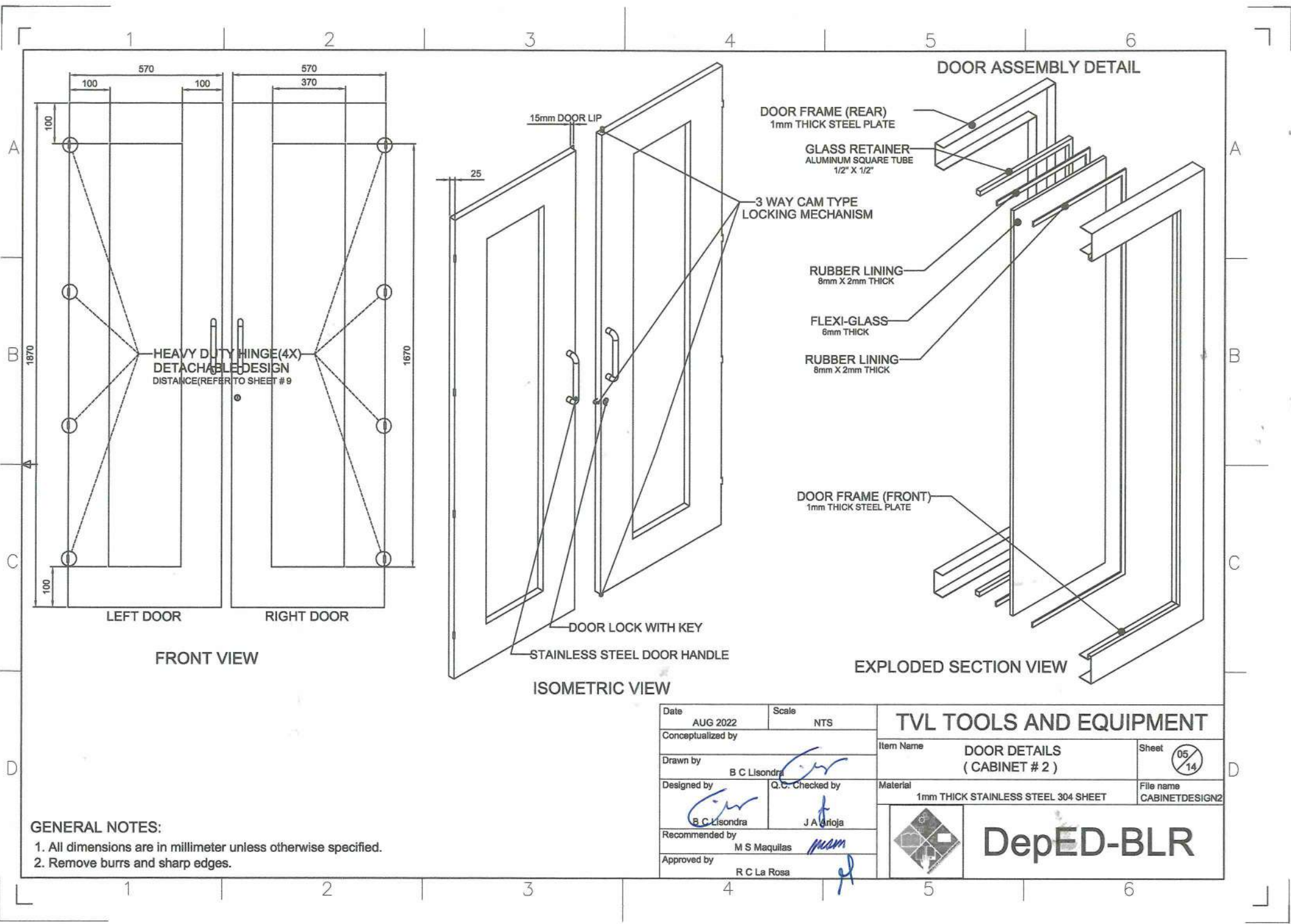


NOTE:
 1. APPLY RIVET (4 places) AFTER ASSEMBLY SO STRENGTHEN ASSEMBLY
 2. ALUMINUM RIVET (Diameter 8mm x 12mm length)




GENERAL NOTES:
 1. All dimensions are in millimeter unless otherwise specified.
 2. Remove burrs and sharp edges.

Date	AUG 2022	Scale	NTS	TVL TOOLS AND EQUIPMENT	
Conceptualized by					
Drawn by	B C Lisondra			Sheet	04/14
Designed by	Q.C. Checked by			Material	1mm THICK STAINLESS STEEL 304 SHEET
Recommended by	M S Maquillas			File name	CABINETDESIGN2
Approved by	R C La Rosa			 DepED-BLR	

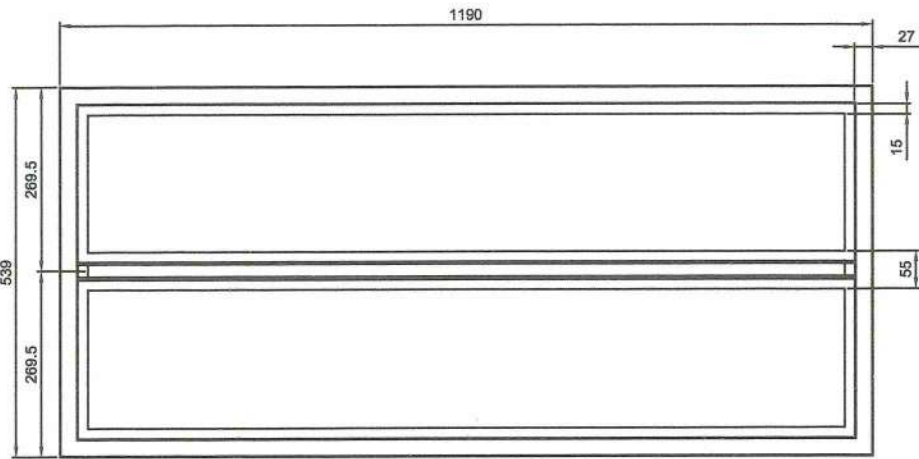


GENERAL NOTES:

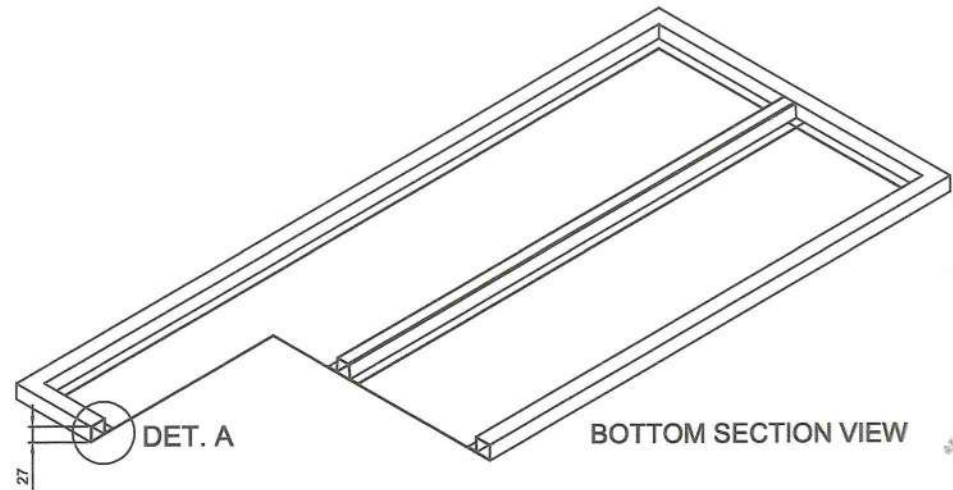
1. All dimensions are in millimeter unless otherwise specified.
2. Remove burrs and sharp edges.

Date	AUG 2022	Scale	NTS	
Conceptualized by				
Drawn by	B C Lisondra		Item Name	DOOR DETAILS (CABINET # 2)
Designed by	B C Lisondra		Material	1mm THICK STAINLESS STEEL 304 SHEET
Q.C. Checked by	J A Arloja		Sheet	05/14
Recommended by	M S Maquillas		File name	CABINETDESIGN2
Approved by	R C La Rosa		 DepED-BLR	

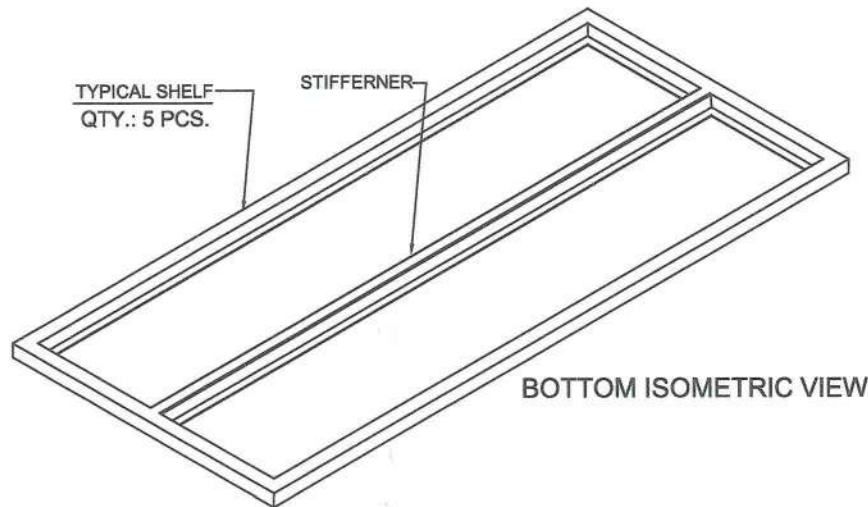
TVL TOOLS AND EQUIPMENT



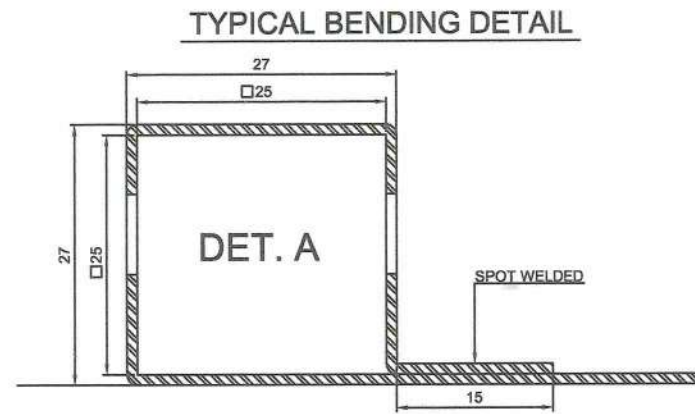
TOP VIEW



BOTTOM SECTION VIEW



BOTTOM ISOMETRIC VIEW

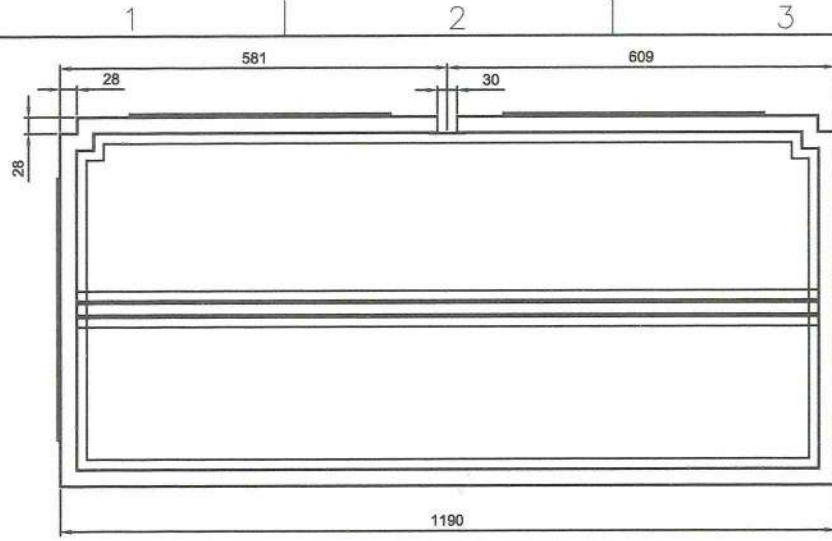


SECTION VIEW

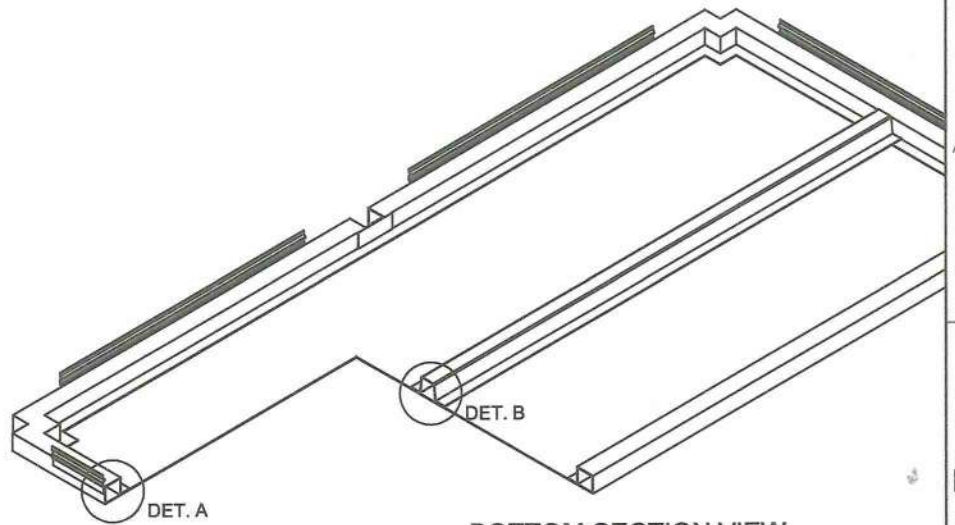
GENERAL NOTES:

1. All dimensions are in millimeter unless otherwise specified.
2. Remove burrs and sharp edges.

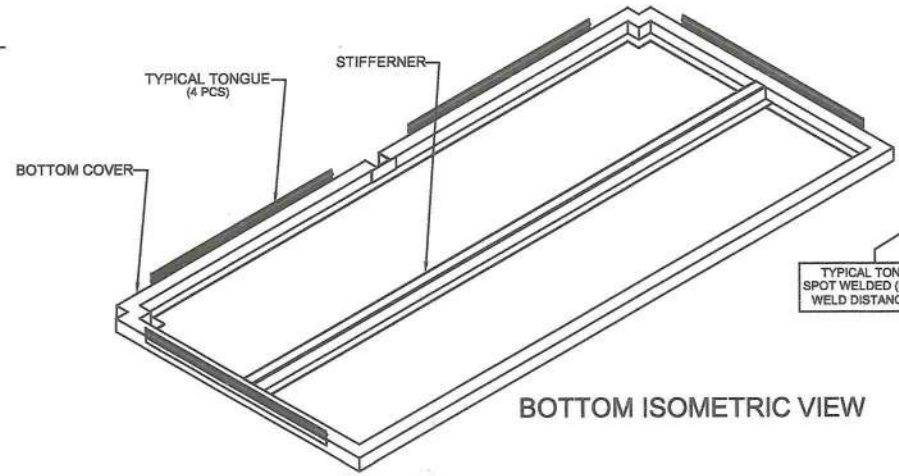
Date AUG 2022	Scale NTS	TVL TOOLS AND EQUIPMENT	
Conceptualized by	Item Name TYPICAL SHELF DETAILS (CABINET # 2)	Sheet 06/14	
Drawn by B C Lisondra	Material 1mm THICK STAINLESS STEEL 304 SHEET	File name CABINETDESIGN2	
Designed by B C Lisondra	Q.C. Checked by J A Artoja	 DepED-BLR	
Recommended by M S Maquillas	Approved by R C La Rosa		



TOP VIEW

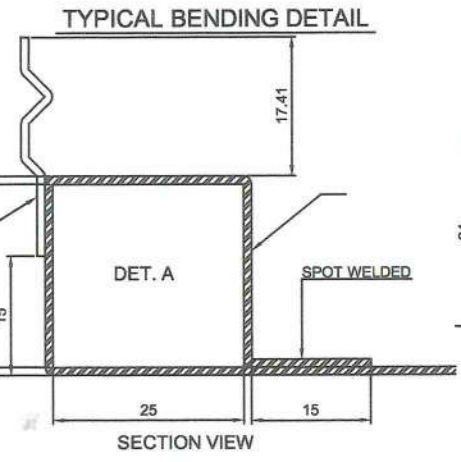


BOTTOM SECTION VIEW



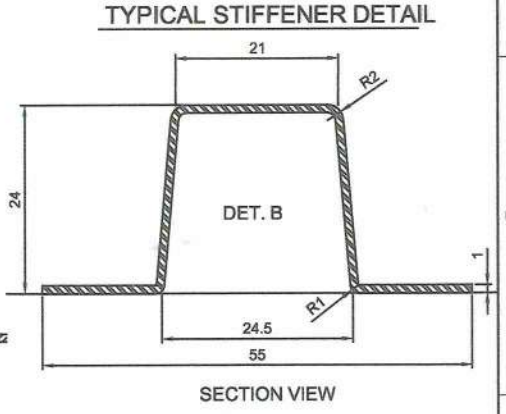
BOTTOM ISOMETRIC VIEW

TYPICAL TONGUE
SPOT WELDED (8POINTS)
WELD DISTANCE 48mm



TYPICAL BENDING DETAIL

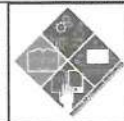
SECTION VIEW



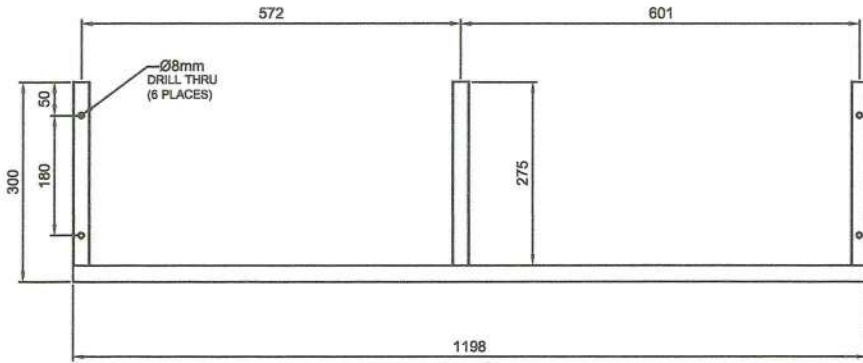
TYPICAL STIFFENER DETAIL

SECTION VIEW

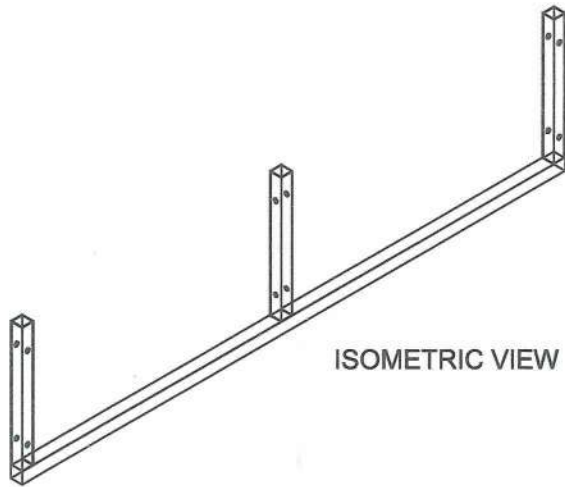
GENERAL NOTES:
 1. All dimensions are in millimeter unless otherwise specified.
 2. Remove burrs and sharp edges.

Date AUG 2022	Scale NTS	TVL TOOLS AND EQUIPMENT	
Conceptualized by		Item Name BOTTOM COVER DETAILS (CABINET # 2)	Sheet 07/14
Drawn by B.C. Lisondra	Designed by B.C. Lisondra	Material 1mm THICK STAINLESS STEEL 304 SHEET	File name CABINETDESIGN2
Recommended by M.S. Maquillas	Checked by J.A. Vrijoja	 DepED-BLR	
Approved by R.C. La Rosa			

REAR BASE FRAME



FRONT VIEW

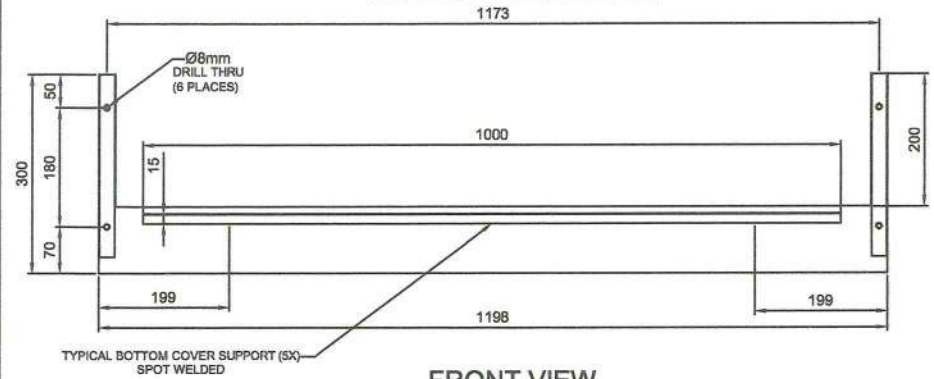


ISOMETRIC VIEW

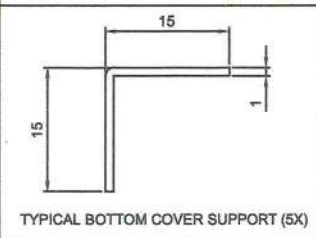
GENERAL NOTES:

1. All dimensions are in millimeter unless otherwise specified.
2. Remove burrs and sharp edges.

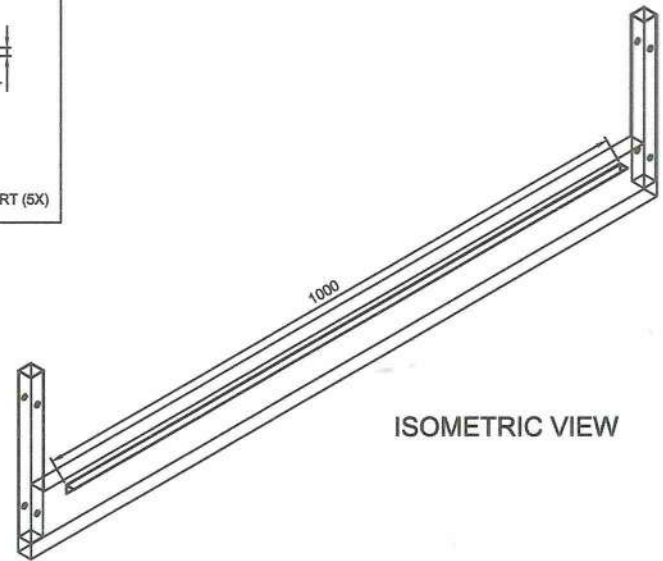
FRONT BASE FRAME




FRONT VIEW

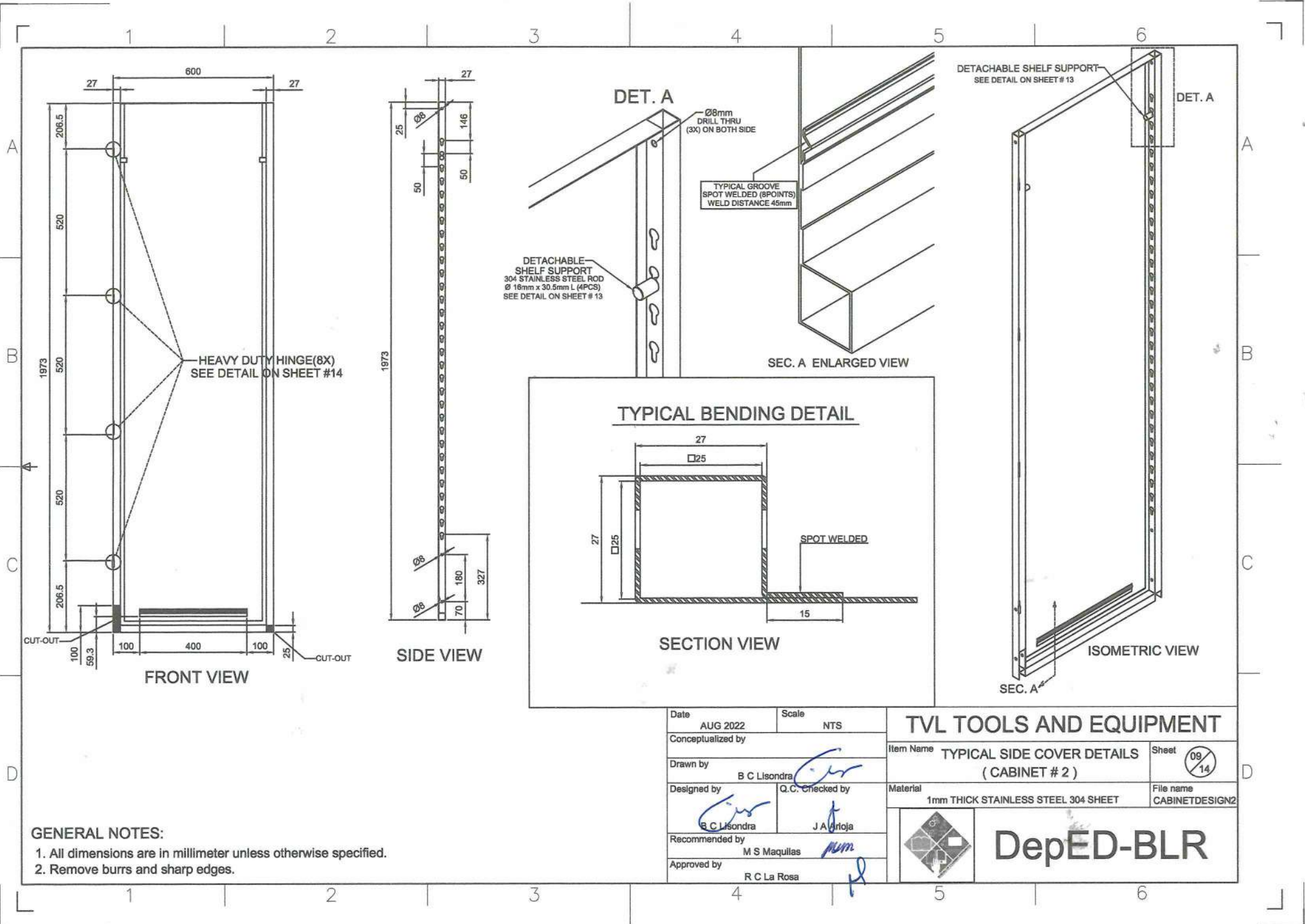


TYPICAL BOTTOM COVER SUPPORT (5X)




ISOMETRIC VIEW

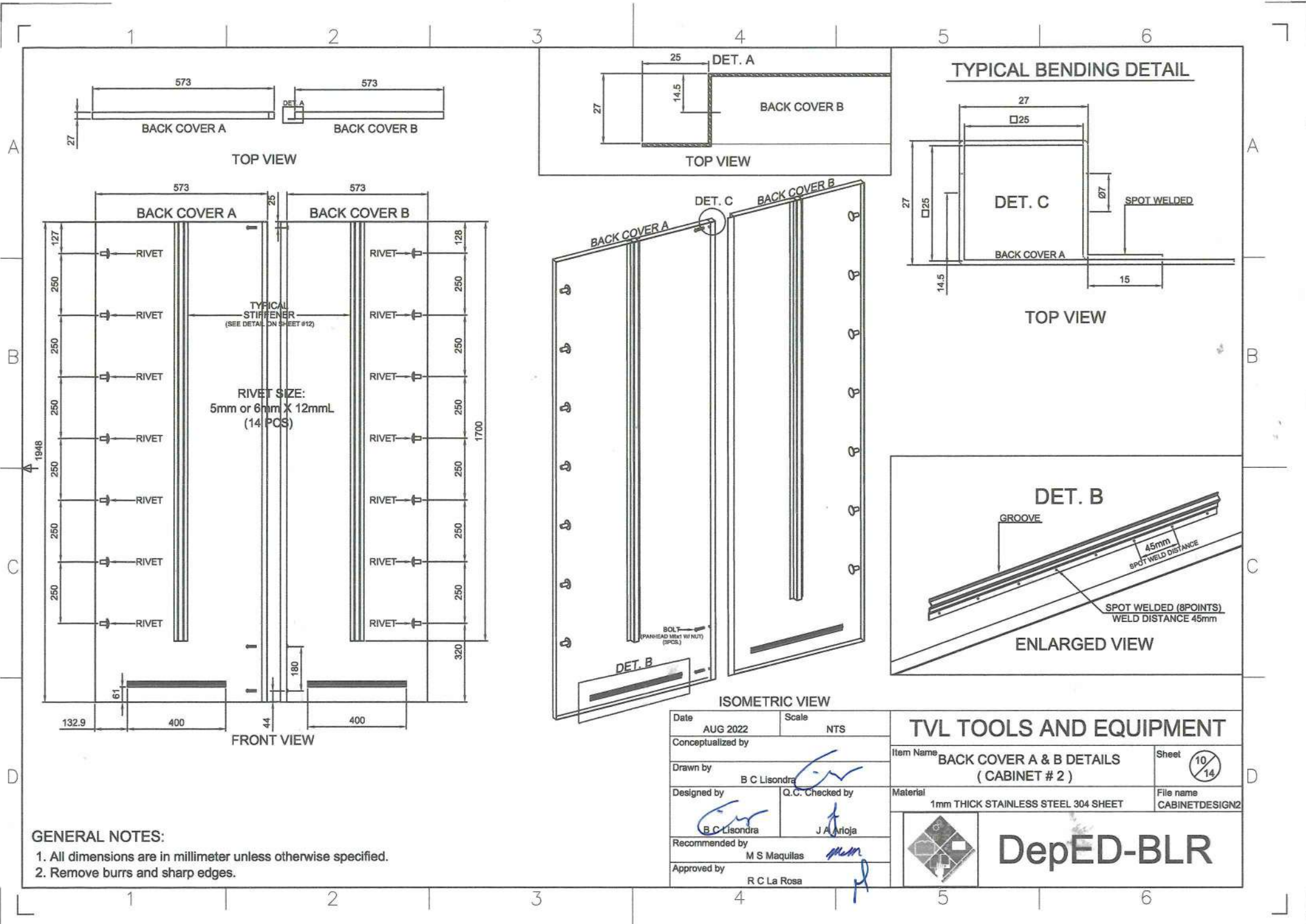
Date AUG 2022	Scale NTS	TVL TOOLS AND EQUIPMENT	
Conceptualized by		Item Name BASE FRAME DETAILS (CABINET # 2)	Sheet 08/14
Drawn by B C Lisondra	Designed by B C Lisondra	Material 1mm THICK STAINLESS STEEL 304 SHEET	File name CABINETDESIGN2
Recommended by M S Maquillas	Q.C. Checked by J A Arriola	 DepED-BLR	
Approved by R C La Rosa			



GENERAL NOTES:

1. All dimensions are in millimeter unless otherwise specified.
2. Remove burrs and sharp edges.

Date	AUG 2022	Scale	NTS	TVL TOOLS AND EQUIPMENT	
Conceptualized by		Item Name	TYPICAL SIDE COVER DETAILS (CABINET # 2)		
Drawn by	B C Lisondra	Q.C. Checked by	J A Artoja	Material	1mm THICK STAINLESS STEEL 304 SHEET
Designed by	B C Lisondra	Recommended by	M S Maquillas	File name	CABINETDESIGN2
Approved by	R C La Rosa			<h1>DepED-BLR</h1>	



TOP VIEW

TOP VIEW


TYPICAL BENDING DETAIL

TOP VIEW

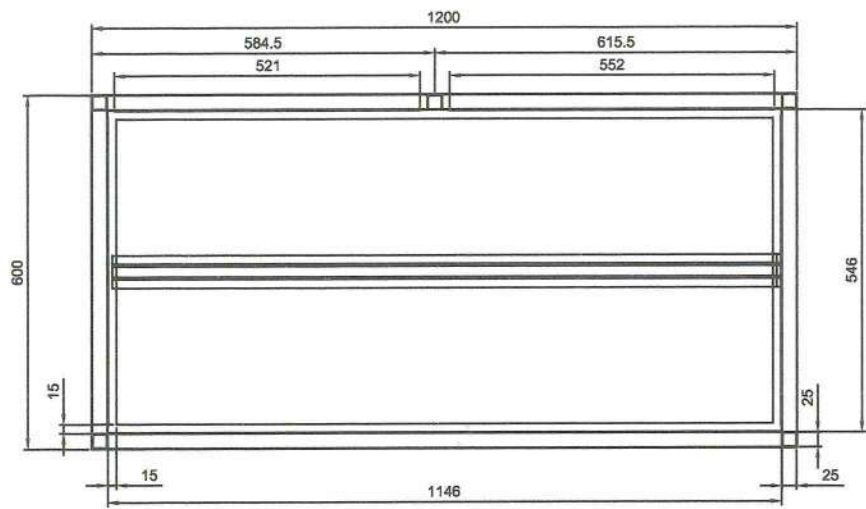
ISOMETRIC VIEW

ENLARGED VIEW

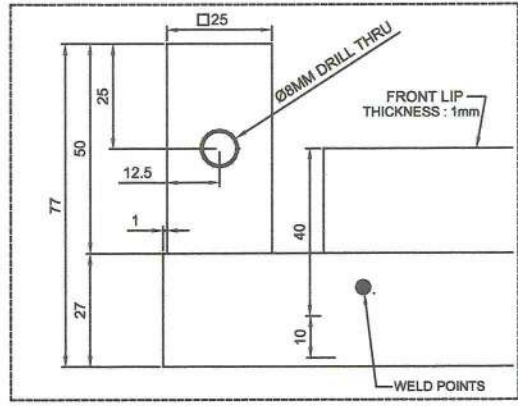
FRONT VIEW

Date	AUG 2022	Scale	NTS	TVL TOOLS AND EQUIPMENT	
Conceptualized by					
Drawn by	B C Lisondra			Sheet	10 / 14
Designed by	B C Lisondra	Q.C. Checked by	J A Arloja	Material	1mm THICK STAINLESS STEEL 304 SHEET
Recommended by	M S Maquillas	Approved by	R C La Rosa	 DepED-BLR	

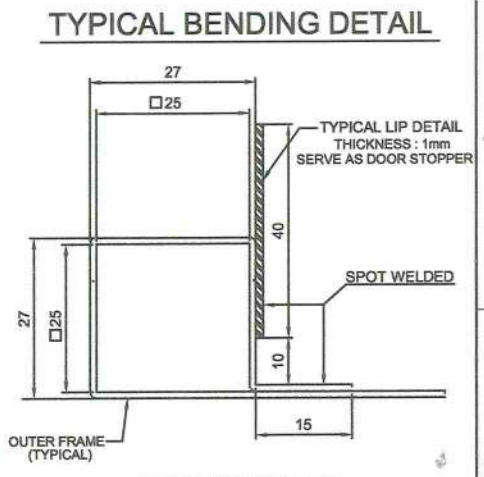
- GENERAL NOTES:**
- All dimensions are in millimeter unless otherwise specified.
 - Remove burrs and sharp edges.



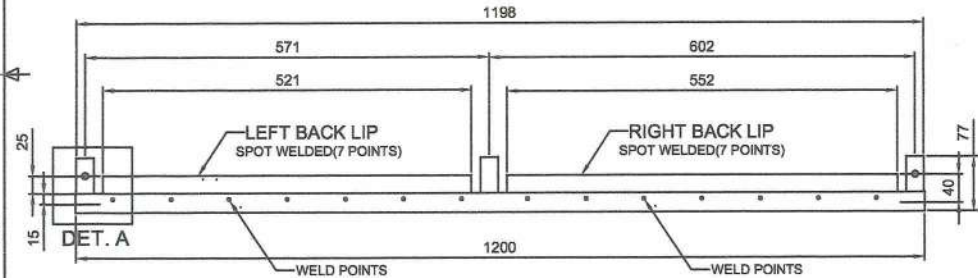
TOP VIEW



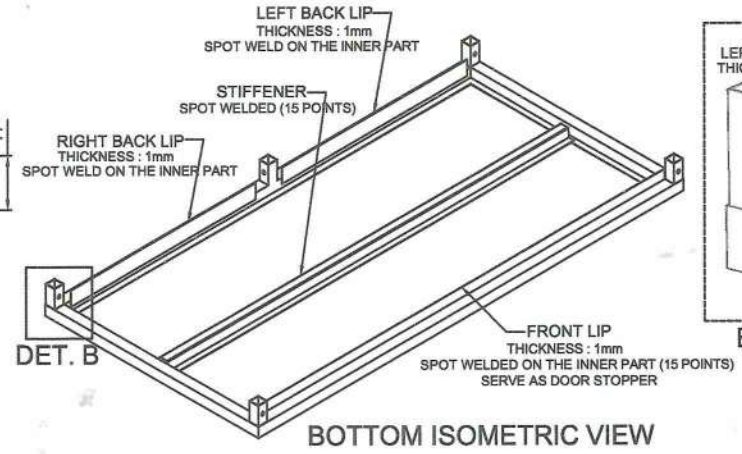
DET. A



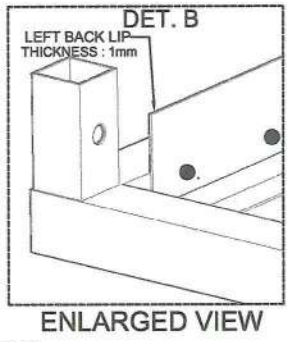
SECTION VIEW



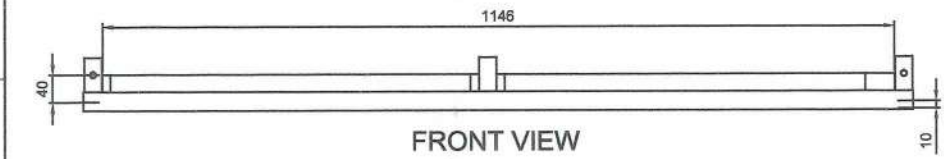
REAR VIEW



BOTTOM ISOMETRIC VIEW



ENLARGED VIEW

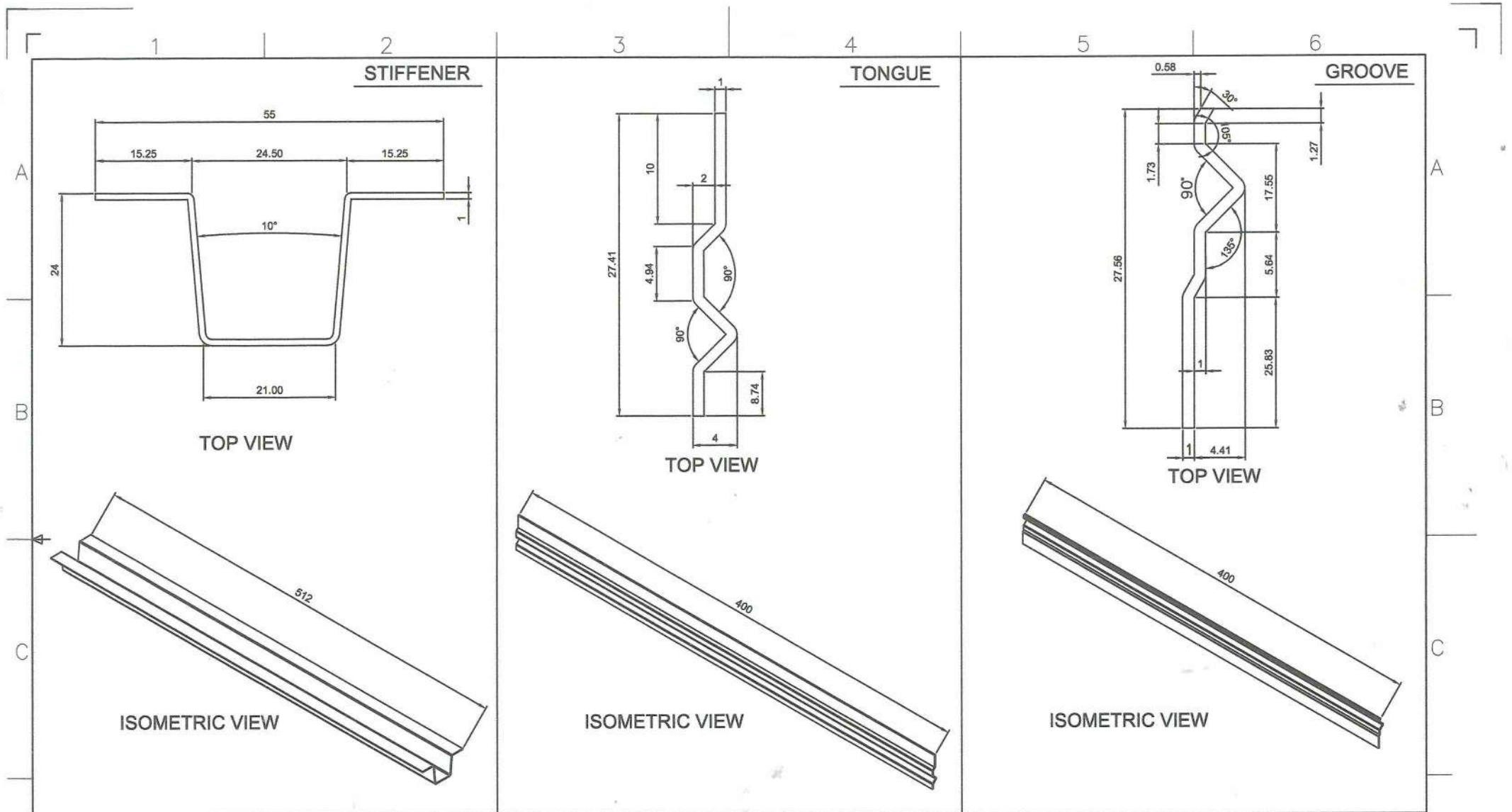


FRONT VIEW

Date	AUG 2022	Scale	NTS	TVL TOOLS AND EQUIPMENT	
Conceptualized by		Item Name	TOP COVER DETAILS (CABINET # 2)		
Drawn by	B C Lisondra	Material	1mm THICK STAINLESS STEEL 304 SHEET	File name	CABINETDESIGN2
Designed by	B C Lisondra	Checked by	J A Anjoja	 DepED-BLR	
Recommended by	M S Maquillas	Approved by	R C La Rosa		


GENERAL NOTES:

1. All dimensions are in millimeter unless otherwise specified.
2. Remove burrs and sharp edges.

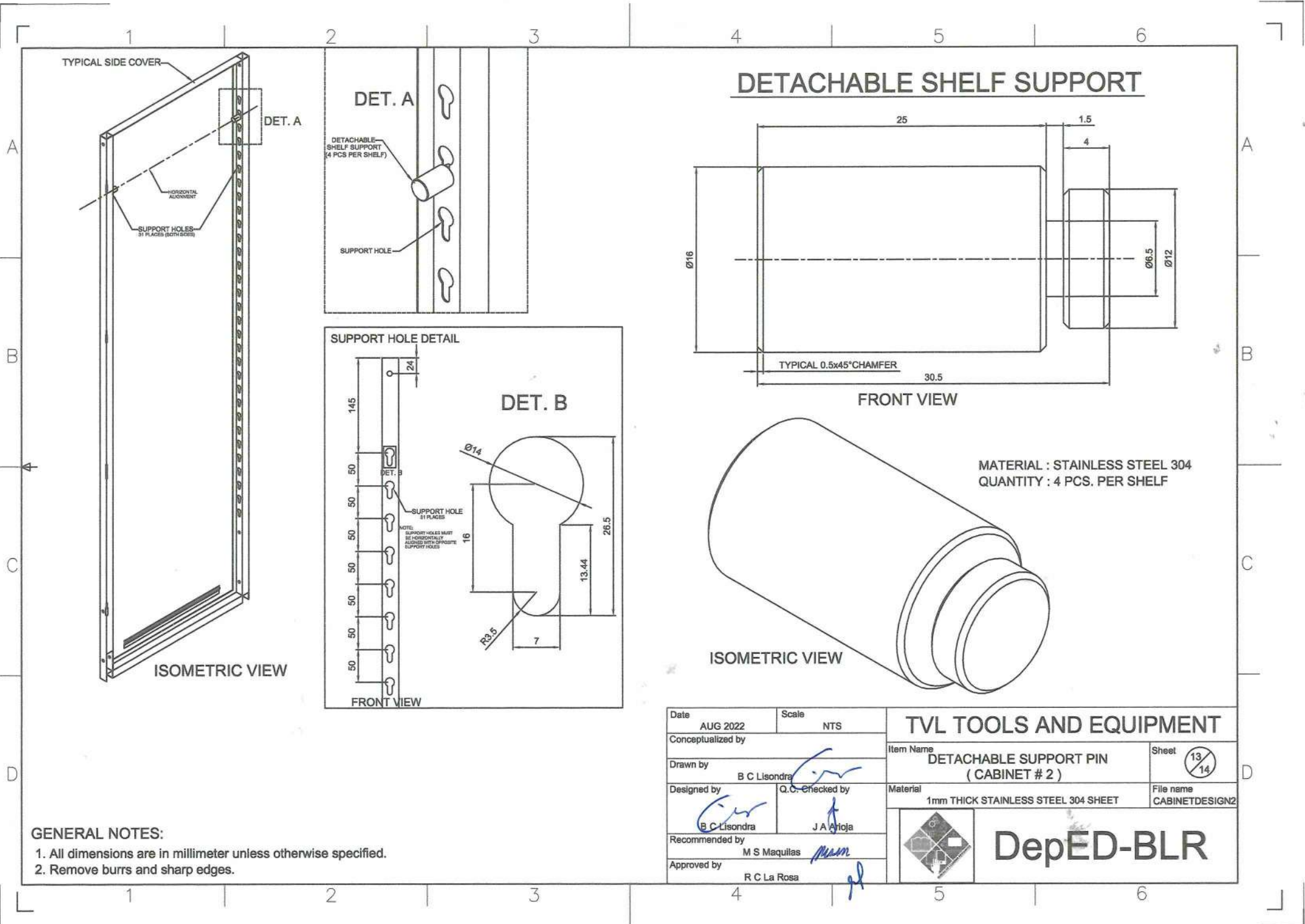


GENERAL NOTES:

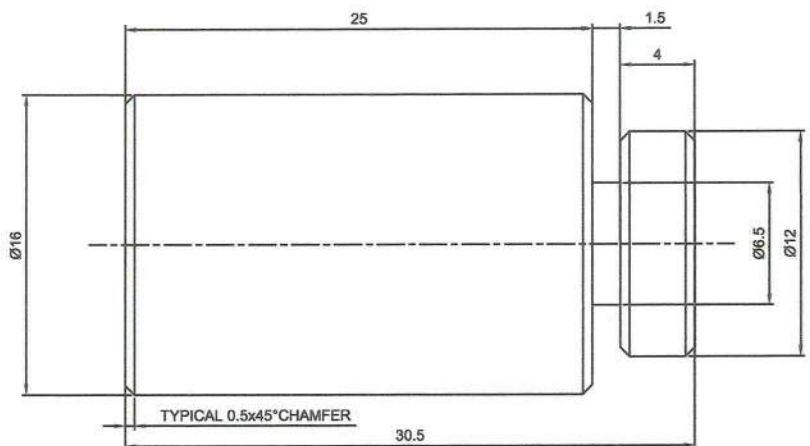
1. All dimensions are in millimeter unless otherwise specified.
2. Remove burrs and sharp edges.

Date	AUG 2022	Scale	NTS	TVL TOOLS AND EQUIPMENT	
Conceptualized by					
Drawn by	B C Lisondra			TYPICAL LOCKING & REINFORCEMENT DETAILS (CABINET # 2)	
Designed by	B C Lisondra	Q.C. Checked by	J A Grijó	Material	File name
				1mm THICK STAINLESS STEEL 304 SHEET	CABINETDESIGN2
Recommended by	M S Maquillas			 DepED-BLR	
Approved by	R C La Rosa				

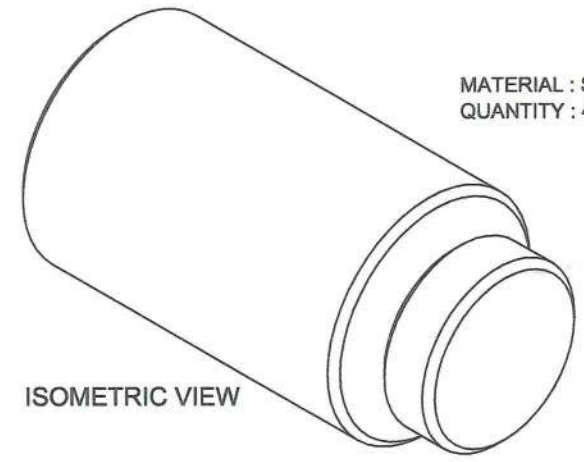
Sheet 12/14



DETACHABLE SHELF SUPPORT

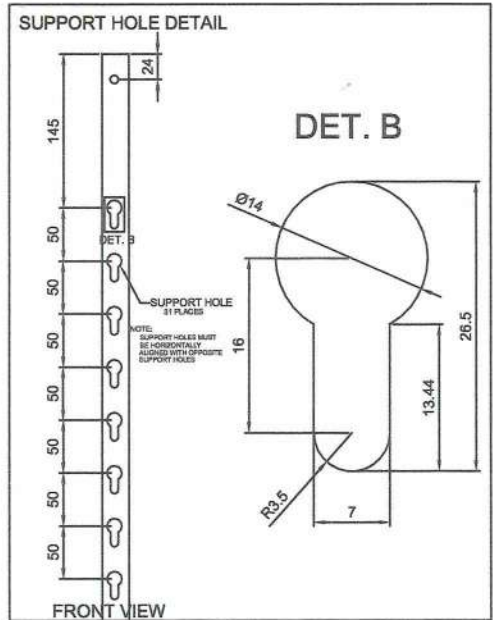
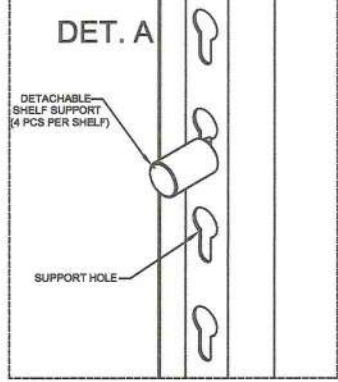


FRONT VIEW

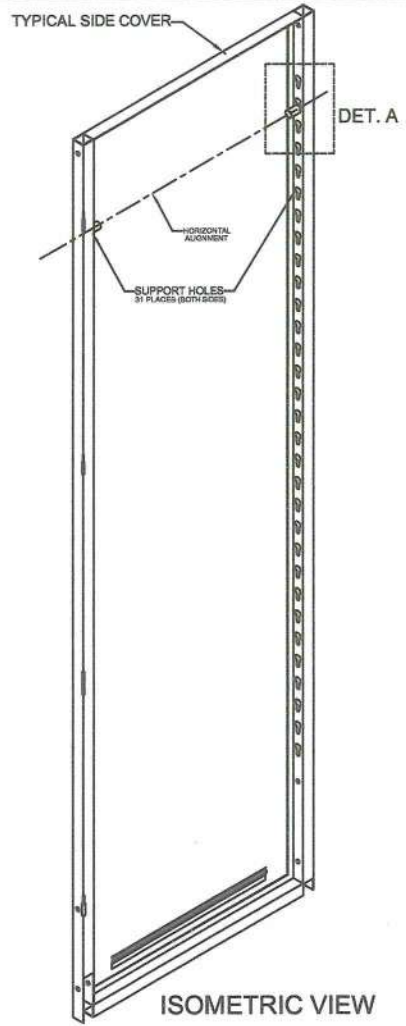


ISOMETRIC VIEW

MATERIAL : STAINLESS STEEL 304
 QUANTITY : 4 PCS. PER SHELF




FRONT VIEW



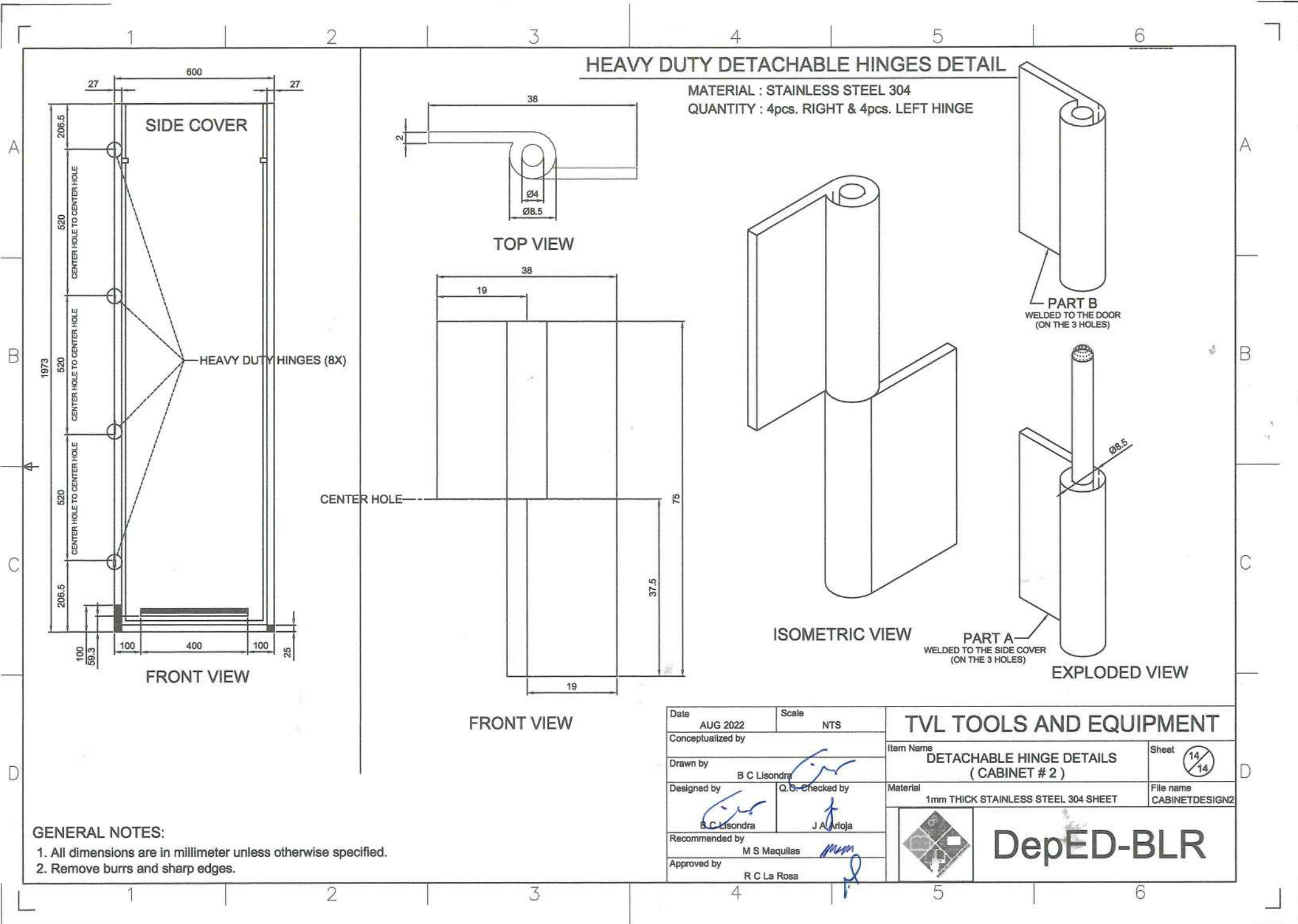
ISOMETRIC VIEW

GENERAL NOTES:
 1. All dimensions are in millimeter unless otherwise specified.
 2. Remove burrs and sharp edges.


Date	AUG 2022	Scale	NTS	TVL TOOLS AND EQUIPMENT	
Conceptualized by				Item Name	DETACHABLE SUPPORT PIN (CABINET # 2)
Drawn by	B C Lisondra	Q.C. Checked by	J A Artoja	Sheet	13/14
Designed by	B C Lisondra	Material	1mm THICK STAINLESS STEEL 304 SHEET	File name	CABINETDESIGN2
Recommended by	M S Maquillas			<h1>DepED-BLR</h1>	
Approved by	R C La Rosa				

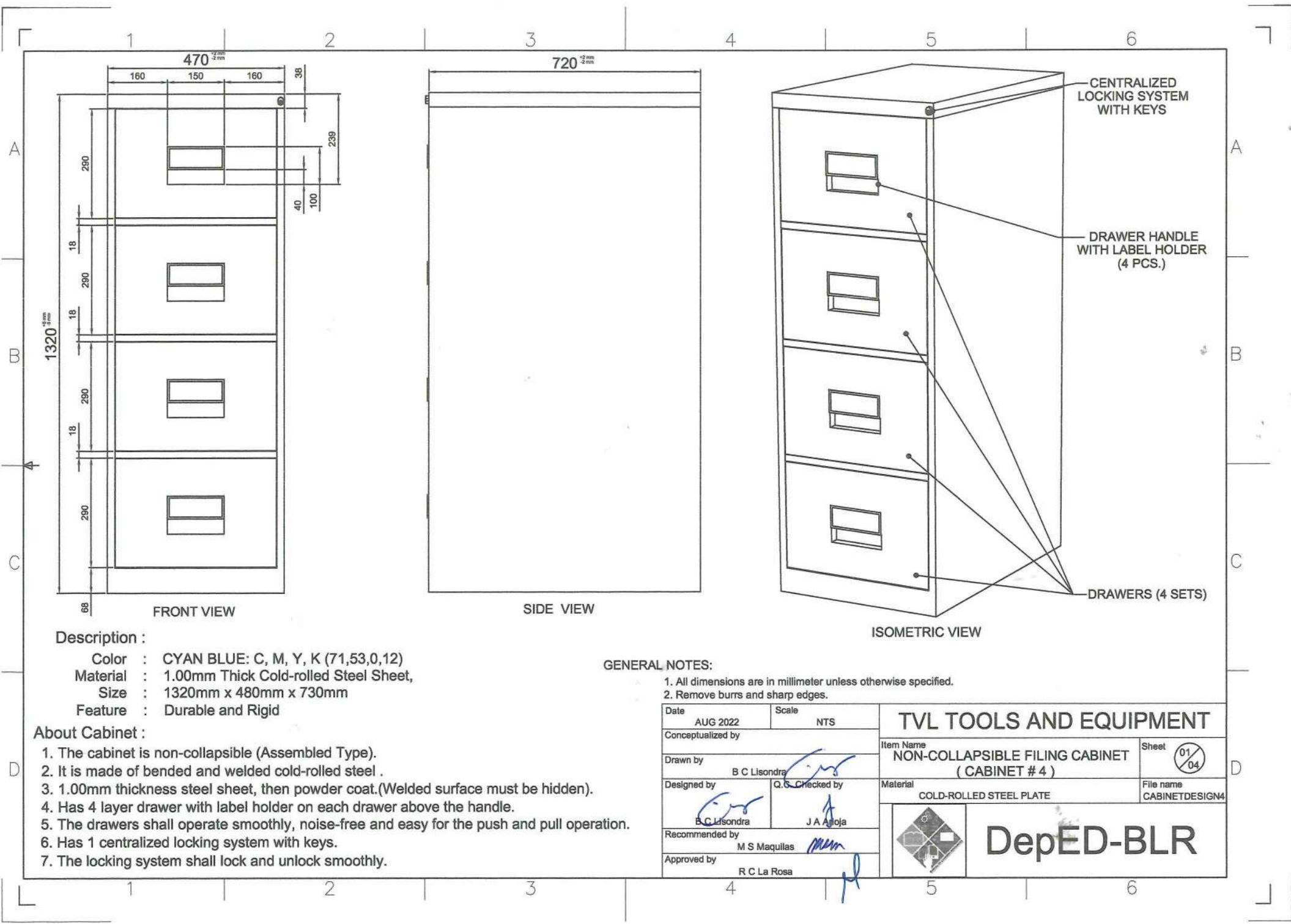
HEAVY DUTY DETACHABLE HINGES DETAIL

MATERIAL : STAINLESS STEEL 304
 QUANTITY : 4pcs. RIGHT & 4pcs. LEFT HINGE



GENERAL NOTES:
 1. All dimensions are in millimeter unless otherwise specified.
 2. Remove burrs and sharp edges.

Date	AUG 2022	Scale	NTS	TVL TOOLS AND EQUIPMENT	
Conceptualized by					
Drawn by	B C Lisondra			DETACHABLE HINGE DETAILS (CABINET # 2)	14/14
Designed by	B C Lisondra		Q.C. Checked by	Material	File name
Recommended by	M S Maquillas		J A Arriola	1mm THICK STAINLESS STEEL 304 SHEET	CABINETDESIGN2
Approved by	R C La Rosa			 DepED-BLR	



Description :


- Color : CYAN BLUE: C, M, Y, K (71,53,0,12)
- Material : 1.00mm Thick Cold-rolled Steel Sheet,
- Size : 1320mm x 480mm x 730mm
- Feature : Durable and Rigid

About Cabinet :

1. The cabinet is non-collapsible (Assembled Type).
2. It is made of bended and welded cold-rolled steel .
3. 1.00mm thickness steel sheet, then powder coat.(Welded surface must be hidden).
4. Has 4 layer drawer with label holder on each drawer above the handle.
5. The drawers shall operate smoothly, noise-free and easy for the push and pull operation.
6. Has 1 centralized locking system with keys.
7. The locking system shall lock and unlock smoothly.

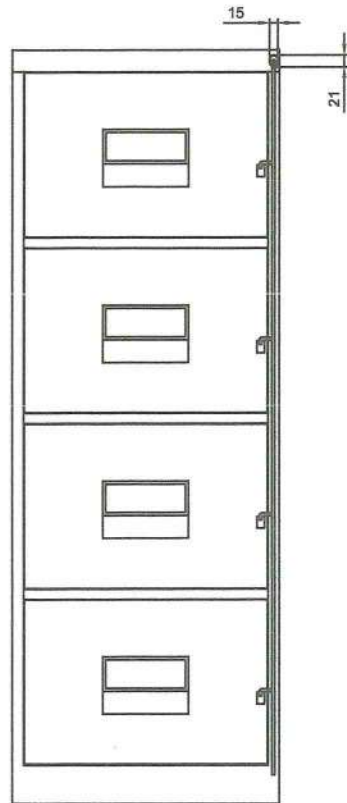
GENERAL NOTES:

1. All dimensions are in millimeter unless otherwise specified.
2. Remove burrs and sharp edges.

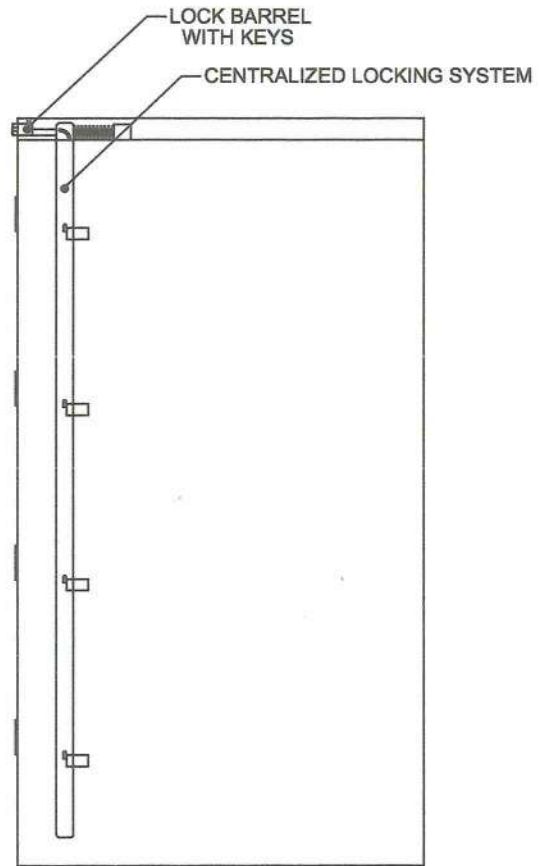
Date AUG 2022	Scale NTS	TVL TOOLS AND EQUIPMENT	
Conceptualized by		Item Name NON-COLLAPSIBLE FILING CABINET (CABINET # 4)	Sheet 01/04
Drawn by B C Lisondra	Checked by Q. S.	Material COLD-ROLLED STEEL PLATE	File name CABINETDESIGN4
Recommended by M S Maquillas	Approved by R C La Rosa	 DepED-BLR	

1 2 3 4 5 6

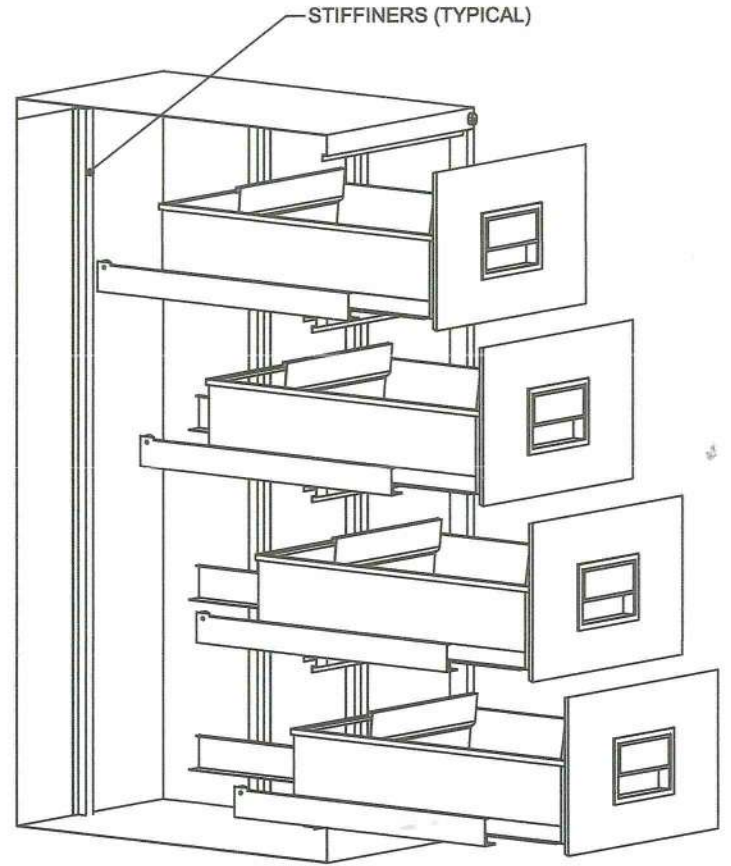
A
B
C



FRONT VIEW



SIDE VIEW




ISOMETRIC VIEW

CENTRALIZED LOCKING SYSTEM :

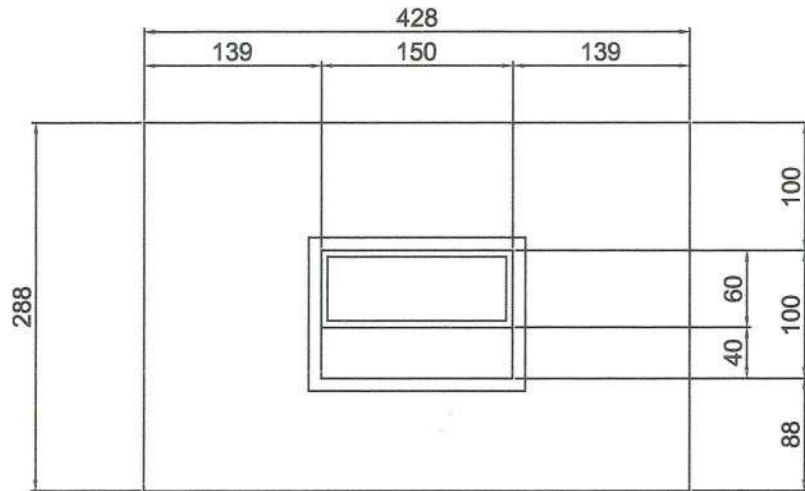
1. Has 1 centralized locking system with keys.
2. The locking system shall lock and unlock smoothly.
3. The locking system shall lock and unlock the 4 drawers simultaneously.
4. Push lock barrel to lock all drawers the use the key to unlock.
5. The locking system should be strong and will not easily break.

GENERAL NOTES:

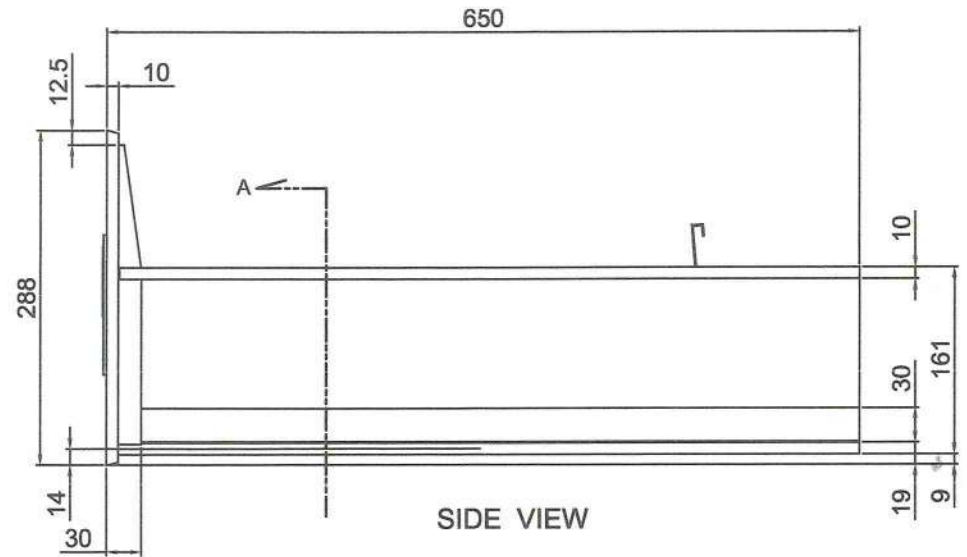
1. All dimensions are in millimeter unless otherwise specified.
2. Remove burrs and sharp edges.

Date AUG 2022	Scale NTS	TVL TOOLS AND EQUIPMENT	
Conceptualized by		Item Name NON-COLLAPSIBLE FILING CABINET (CABINET # 4)	Sheet 02/04
Drawn by B C Lisondra	Q.C. Checked by J A Artoja	Material COLD-ROLLED STEEL PLATE	File name CABINETDESIGN4
Recommended by M S Maquillas	Approved by R C La Rosa	 DepED-BLR	

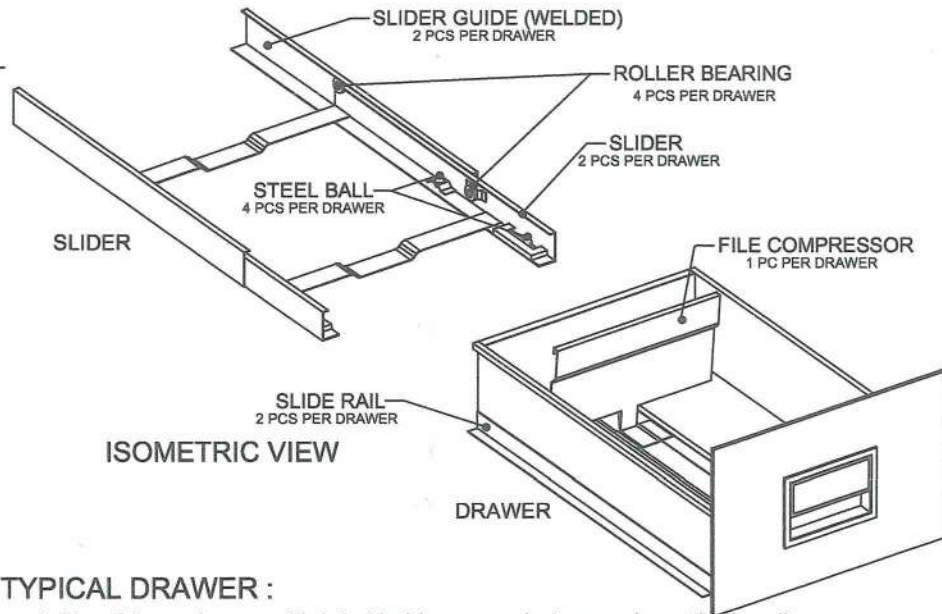
1 2 3 4 5 6



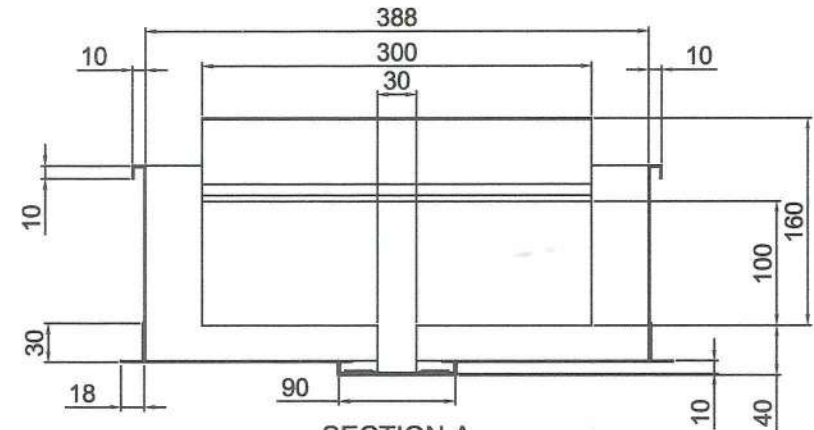
FRONT VIEW



SIDE VIEW



ISOMETRIC VIEW




SECTION A

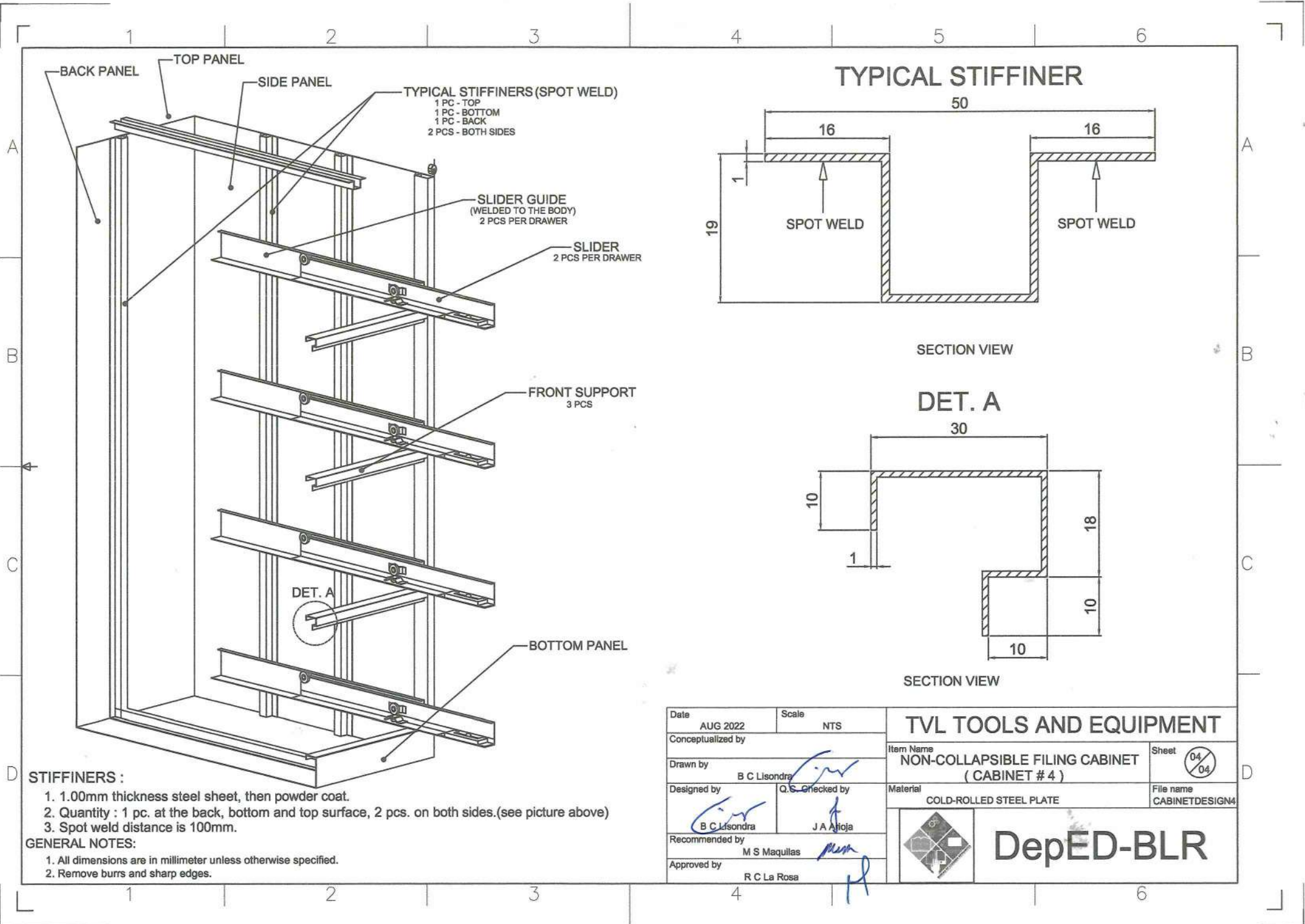
TYPICAL DRAWER :

1. Has 4 layer drawer with label holder on each drawer above the handle.
2. The drawers shall operate smoothly, noise-free and easy for the push and pull operation.

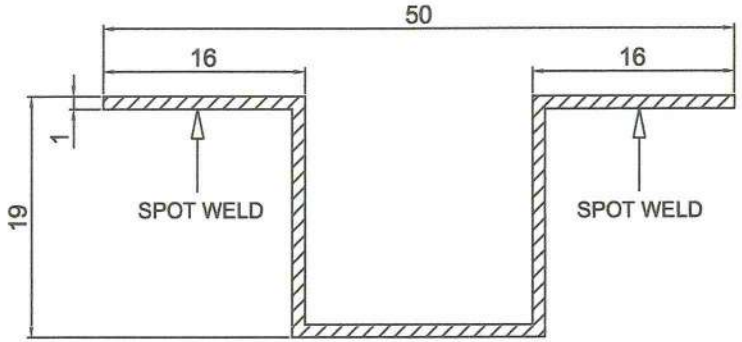
GENERAL NOTES:

1. All dimensions are in millimeter unless otherwise specified.
2. Remove burrs and sharp edges.

Date AUG 2022	Scale NTS	TVL TOOLS AND EQUIPMENT	
Conceptualized by		Item Name NON-COLLAPSIBLE FILING CABINET (CABINET # 4)	Sheet 03/04
Drawn by B C Lisondra	Designed by Q.S.	Material COLD-ROLLED STEEL PLATE	File name CABINETDESIGN4
Recommended by M S Maquillas	Checked by J A Ahoja	 DepED-BLR	
Approved by R C La Rosa			

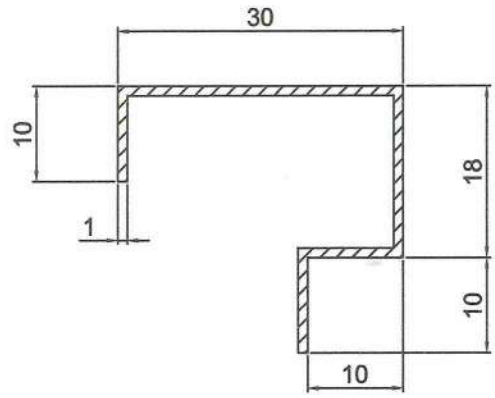


TYPICAL STIFFENER



SECTION VIEW

DET. A




SECTION VIEW

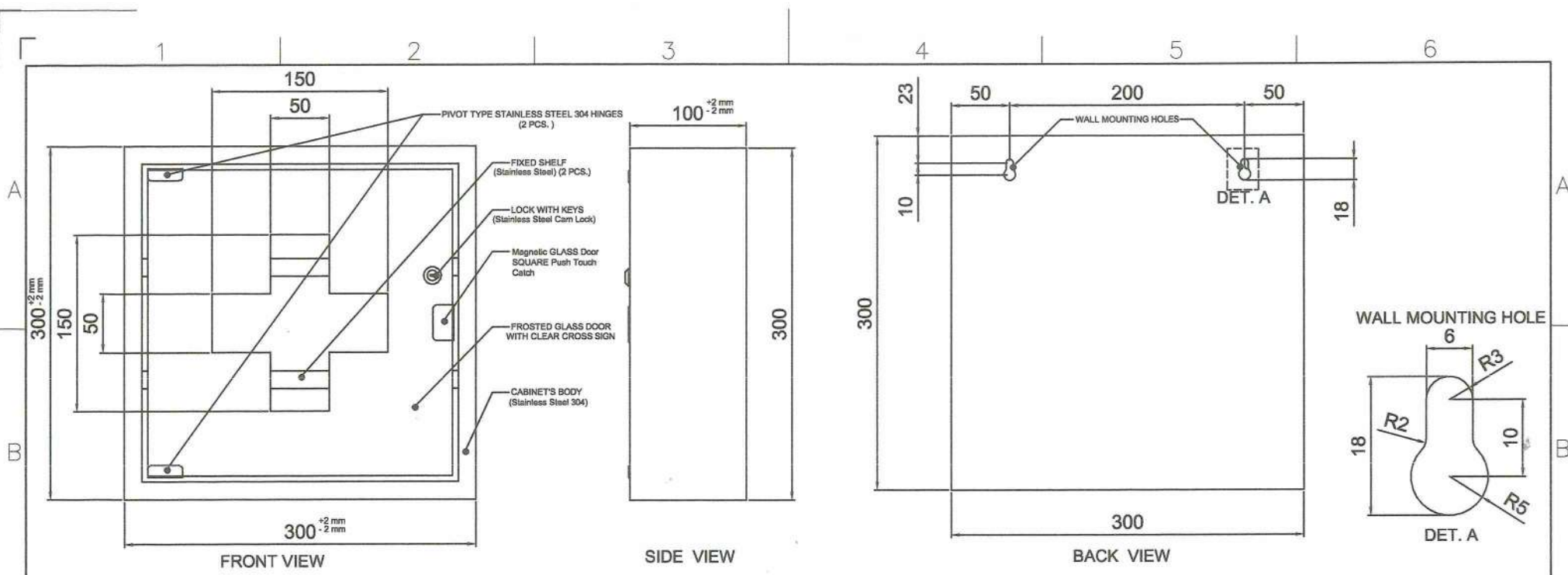
STIFFENERS :

1. 1.00mm thickness steel sheet, then powder coat.
2. Quantity : 1 pc. at the back, bottom and top surface, 2 pcs. on both sides.(see picture above)
3. Spot weld distance is 100mm.

GENERAL NOTES:

1. All dimensions are in millimeter unless otherwise specified.
2. Remove burrs and sharp edges.

Date AUG 2022	Scale NTS	TVL TOOLS AND EQUIPMENT	
Conceptualized by		Item Name NON-COLLAPSIBLE FILING CABINET (CABINET # 4)	Sheet 04/04
Drawn by B C Lisondra	Q.C. Checked by J A Arjoja	Material COLD-ROLLED STEEL PLATE	File name CABINETDESIGN4
Recommended by M S Maquilas	Approved by R C La Rosa	 DepED-BLR	

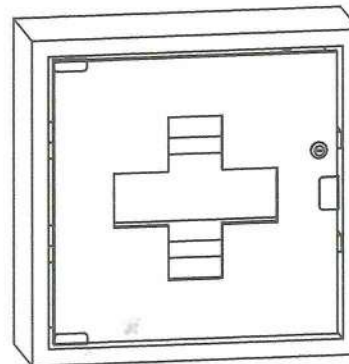


Description :

- Finish : Polished
- Material : 1.00mm Thick Stainless Steel 304 Sheet
- Size : 300mm x 300mm x 100mm
- Feature : Durable and Rigid

About Cabinet :

1. The cabinet body's material is 1.00mm thickness stainless steel 304 sheet then polished.
2. The cabinet is wall mounted.
(includes 2pcs. 5mm diameter screws for mounting).
3. There are 2 fixed shelves.(Stainless Steel 304)
4. 1 set lock with keys.(Stainless steel cam lock)
5. With hinge.(Pivot Type Press-Fit Glass Door Hinge 2 pcs.)
6. With magnetic glass door SQUARE Push Touch Catch
7. 6mm thick frosted glass door with clear cross sign at the center.
8. Assembled type cabinet.



ISOMETRIC VIEW

GENERAL NOTES:

1. All dimensions are in millimeter unless otherwise specified.
2. Remove burrs and sharp edges.

Date AUG 2022	Scale NTS	TVL TOOLS AND EQUIPMENT	
Conceptualized by		Item Name NON-COLLAPSIBLE FIRST AID CABINET (CABINET # 5)	Sheet 01/01
Drawn by B C Lisondra	Q.O. Checked by J A Antoja	Material STAINLESS STEEL 304 SHEET	File name CABINETDESIGN5
Recommended by M S Maquillas	Approved by R C La Rosa	DepED-BLR	